

For Research Use Only

GEMIN5 Recombinant antibody, PBS Only (Detector)

Catalog Number: 84171-3-PBS



Basic Information

Catalog Number: 84171-3-PBS	GenBank Accession Number: BC113614	Purification Method: Protein A purification
Size: 100ug , Concentration: 1 mg/ml by Nanodrop;	GeneID (NCBI): 25929	CloneNo.: 241205D8
Source: Rabbit	UNIPROT ID: Q8TEQ6	
Isotype: IgG	Full Name: gem (nuclear organelle) associated protein 5	
Immunogen Catalog Number: AG19220	Calculated MW: 1508 aa, 169 kDa	

Applications

Tested Applications:
WB, IF/ICC, Cytometric bead array, Indirect ELISA

Species Specificity:
human

Product Information

84171-3-PBS targets GEMIN5 as part of a matched antibody pair:

MP01070-1: 84171-1-PBS capture and 84171-3-PBS detection (validated in Cytometric bead array)

MP01070-3: 84171-4-PBS capture and 84171-3-PBS detection (validated in Cytometric bead array)

Unconjugated rabbit recombinant monoclonal antibody in PBS only (BSA and azide free) storage buffer at a concentration of 1 mg/mL, ready for conjugation. Created using Proteintech's proprietary in-house recombinant technology. Recombinant production enables unrivalled batch-to-batch consistency, easy scale-up, and future security of supply.

This conjugation ready format makes antibodies ideal for use in many applications including: ELISAs, multiplex assays requiring matched pairs, mass cytometry, and multiplex imaging applications. Antibody use should be optimized by the end user for each application and assay.

Background Information

GEMIN5 also named as Gem associated protein 5 is a 1508 amino-acid protein, which belongs to the WD repeat gemin-5 family. The molecular weight of GEMIN5 is 168 kDa. GEMIN5 is a component of SMN complex, which plays an essential role in spliceosomal snRNP assembly in the cytoplasm and is required for pre-mRNA splicing in the nucleus. GEMIN5 is identified as the factor that allows the SMN complex to distinguish snRNAs from other cellular RNAs for snRNP biogenesis. GEMIN5 is found in nucleoplasm, nuclear bodies and cytoplasm.

Storage

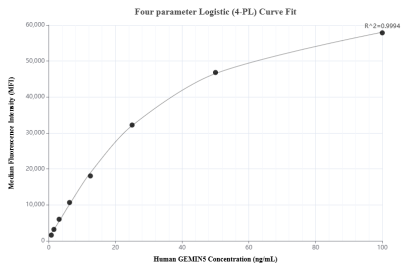
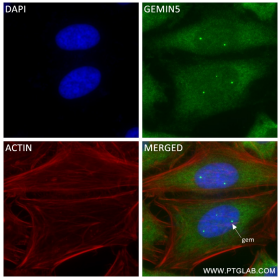
Storage:
Store at -80°C.
Storage Buffer:
PBS Only

For technical support and original validation data for this product please contact:
T: 1 (888) 4PTGLAB (1-888-478-4522) (toll free in USA), or 1(312) 455-8498 (outside USA)
E: proteintech@ptglab.com
W: ptglab.com

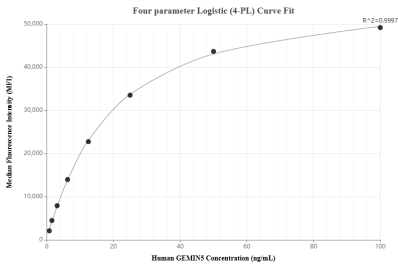
This product is exclusively available under Proteintech Group brand and is not available to purchase from any other manufacturer.

Selected Validation Data

Various lysates were subjected to SDS PAGE followed by western blot with 84171-3-RR (GEMIN5 antibody) at dilution of 1:10000 incubated at room temperature for 1.5 hours. This data was developed using the same antibody clone with 84171-3-PBS in a different storage buffer formulation.



Cytometric bead array standard curve of MP01070-1, GEMIN5 Recombinant Matched Antibody Pair, PBS Only. Capture antibody: 84171-1-PBS. Detection antibody: 84171-3-PBS. Standard: Ag19220. Range: 0.781-100 ng/mL.



Cytometric bead array standard curve of MP01070-3, GEMIN5 Recombinant Matched Antibody Pair, PBS Only. Capture antibody: 84171-4-PBS. Detection antibody: 84171-3-PBS. Standard: Ag19220. Range: 0.781-100 ng/mL.