

For Research Use Only

SYNGR1 Recombinant antibody

Catalog Number: 84161-3-RR



Basic Information

Catalog Number: 84161-3-RR	GenBank Accession Number: BC000731	Purification Method: Protein A purification
Size: 100ul , Concentration: 1000 µg/ml by Nanodrop;	GeneID (NCBI): 9145	CloneNo.: 241460D1
Source: Rabbit	UNIPROT ID: O43759	Recommended Dilutions: WB 1:5000-1:50000 IF-P 1:50-1:500
Isotype: IgG	Full Name: synaptogyrin 1	
Immunogen Catalog Number: AG0685	Calculated MW: 25 kDa	
	Observed MW: 30 kDa	

Applications

Tested Applications: WB, IF-P, ELISA	Positive Controls:
Species Specificity: human, mouse, rat, pig	WB : mouse brain tissue, pig brain tissue, rat brain tissue IF-P : mouse brain tissue,

Background Information

Synaptogyrins are one of the most abundant vesicle components and are involved in the regulation of neurotransmitter release and synaptic plasticity. Synaptogyrins comprise a family of tyrosine-phosphorylated proteins with three isoforms: two neuronal forms (synaptogyrin-1 and -3) and one ubiquitous form (synaptogyrin-2). The synaptogyrin 1 (SYNGR1) can act as a regulator of Ca²⁺-dependent exocytosis. SYNGR1 protein mutations are associated with schizophrenia and are considered to be positional candidate genes for schizophrenia. (PMID: 10383386; 10595519; 14755516; 14732601; 17049558)

Storage

Storage:
Store at -20°C. Stable for one year after shipment.
Storage Buffer:
PBS with 0.02% sodium azide and 50% glycerol pH 7.3.
Aliquoting is unnecessary for -20°C storage

*** 20ul sizes contain 0.1% BSA

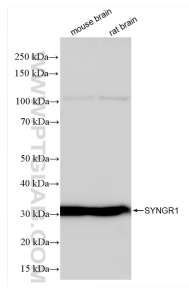
For technical support and original validation data for this product please contact:

T: 1 (888) 4PTGLAB (1-888-478-4522) (toll free in USA), or 1(312) 455-8498 (outside USA)

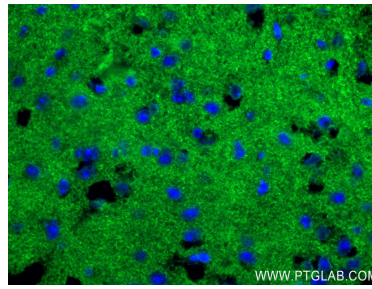
E: proteintech@ptglab.com
W: ptglab.com

This product is exclusively available under Proteintech Group brand and is not available to purchase from any other manufacturer.

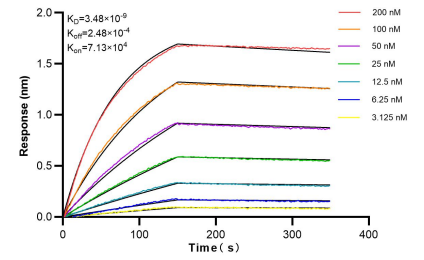
Selected Validation Data



Various lysates were subjected to SDS PAGE followed by western blot with 84161-3-RR (SYNGR1 antibody) at dilution of 1:10000 incubated at room temperature for 1.5 hours.



Immunofluorescent analysis of (4% PFA) fixed mouse brain tissue using SYNGR1 antibody (84161-3-RR, Clone: 241460D1) at dilution of 1:200 and CoraLite®488-Conjugated Goat Anti-Rabbit IgG(H+L) (SA00013-2).



Biolayer interferometry (BLI) kinetic assays of 84161-3-RR against Human SYNGR1 were performed. The affinity constant is 3.48 nM.