

For Research Use Only

PPP2CA Recombinant antibody, PBS Only

Catalog Number: 84155-6-PBS



Basic Information

Catalog Number: 84155-6-PBS	GenBank Accession Number: BC031696	Purification Method: Protein A purification
Size: 100ug, Concentration: 1 mg/ml by Nanodrop;	GeneID (NCBI): 5515	CloneNo.: 241112F3
Source: Rabbit	UNIPROT ID: P67775	
Isotype: IgG	Full Name: protein phosphatase 2 (formerly 2A), catalytic subunit, alpha isoform	
Immunogen Catalog Number: AG4294	Calculated MW: 309 aa, 36 kDa	

Applications

Tested Applications:
IF/ICC, FC (Intra), Indirect ELISA

Species Specificity:
human

Background Information

PPP2CA, also named as RP-C and PP2A-alpha, belongs to the PPP phosphatase family and PP-1 subfamily. PP2A can modulate the activity of phosphorylase B kinase casein kinase 2, mitogen-stimulated S6 kinase, and MAP-2 kinase. PP2A activity was modestly decreased in AML patients harboring C-KIT/WT. PP2A is a target for C-KIT/TKD and implicated the potential efficacy of therapies targeting PP2A in such AML in future.

Storage

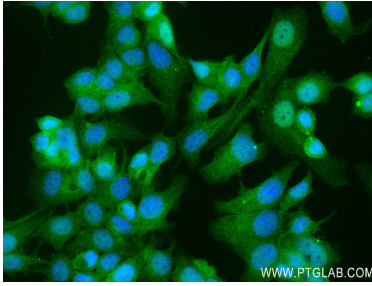
Storage:
Store at -80°C.

Storage Buffer:
PBS Only

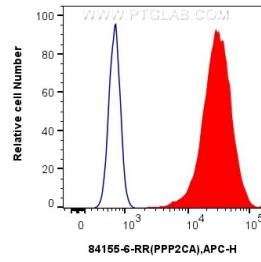
For technical support and original validation data for this product please contact:
T: 1 (888) 4PTGLAB (1-888-478-4522) (toll free in USA), or 1(312) 455-8498 (outside USA) E: proteintech@ptglab.com
W: ptglab.com

This product is exclusively available under Proteintech Group brand and is not available to purchase from any other manufacturer.

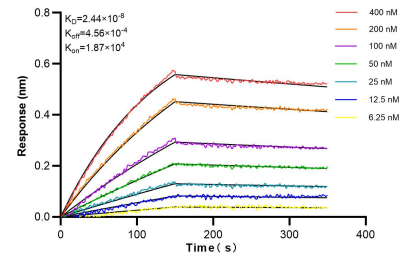
Selected Validation Data



Immunofluorescent analysis of (4% PFA) fixed MCF-7 cells using PPP2CA antibody (84155-6-RR, Clone: 241112F3) at dilution of 1:100 and CoraLite@488-Conjugated Goat Anti-Rabbit IgG(H+L) (SA00013-2). This data was developed using the same antibody clone with 84155-6-PBS in a different storage buffer formulation.



1x10⁶ HeLa cells were intracellularly stained with 0.25 ug PPP2CA Recombinant antibody (84155-6-RR, Clone:241112F3) and APC-Conjugated Goat Anti-Rabbit IgG(H+L)(red), or 0.25 ug Isotype Control (blue). Cells were fixed with 4% PFA and permeabilized with Flow Cytometry Perm Buffer (PF00011-C). This data was developed using the same antibody clone with 84155-6-PBS in a different storage buffer formulation.



Biacore kinetic assays of 84155-6-RR against Human PPP2CA were performed. The affinity constant is 24.4 nM.