

For Research Use Only

# PPP2CA Recombinant antibody

Catalog Number: 84155-5-RR



## Basic Information

<b>Catalog Number:</b> 84155-5-RR	<b>GenBank Accession Number:</b> BC031696	<b>Purification Method:</b> Protein A purification
<b>Size:</b> 100ul , Concentration: 1000 µg/ml by Nanodrop;	<b>GeneID (NCBI):</b> 5515	<b>CloneNo.:</b> 241112B8
<b>Source:</b> Rabbit	<b>UNIPROT ID:</b> P67775	<b>Recommended Dilutions:</b> WB 1:2000-1:10000
<b>Isotype:</b> IgG	<b>Full Name:</b> protein phosphatase 2 (formerly 2A), catalytic subunit, alpha isoform	
<b>Immunogen Catalog Number:</b> AG4294	<b>Calculated MW:</b> 309 aa, 36 kDa	
	<b>Observed MW:</b> 36 kDa	

## Applications

<b>Tested Applications:</b> WB, ELISA	<b>Positive Controls:</b> WB : MCF-7 cells, Jurkat cells
<b>Species Specificity:</b> human	

## Background Information

PPP2CA, also named as RP-C and PP2A-alpha, belongs to the PPP phosphatase family and PP-1 subfamily. PP2A can modulate the activity of phosphorylase B kinase casein kinase 2, mitogen-stimulated S6 kinase, and MAP-2 kinase. PP2A activity was modestly decreased in AML patients harboring C-KIT/WT. PP2A is a target for C-KIT/TKD and implicated the potential efficacy of therapies targeting PP2A in such AML in future.

## Storage

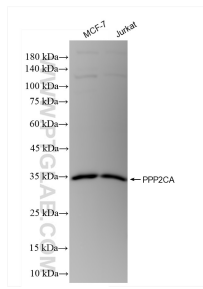
**Storage:**  
Store at -20°C. Stable for one year after shipment.  
**Storage Buffer:**  
PBS with 0.02% sodium azide and 50% glycerol pH 7.3.  
Aliquoting is unnecessary for -20°C storage

\*\*\* 20ul sizes contain 0.1% BSA

For technical support and original validation data for this product please contact:  
T: 1 (888) 4PTGLAB (1-888-478-4522) (toll free in USA), or 1(312) 455-8498 (outside USA)  
E: proteintech@ptglab.com  
W: ptglab.com

This product is exclusively available under Proteintech Group brand and is not available to purchase from any other manufacturer.

## Selected Validation Data



Various lysates were subjected to SDS PAGE followed by western blot with 84155-5-RR (PPP2CA antibody) at dilution of 1:5000 incubated at room temperature for 1.5 hours.