

For Research Use Only

PPP2CA Recombinant antibody, PBS Only

Catalog Number: 84155-5-PBS



Basic Information

Catalog Number: 84155-5-PBS	GenBank Accession Number: BC031696	Purification Method: Protein A purification
Size: 100ug , Concentration: 1 mg/ml by Nanodrop;	GeneID (NCBI): 5515	CloneNo.: 241112B8
Source: Rabbit	UNIPROT ID: P67775	
Isotype: IgG	Full Name: protein phosphatase 2 (formerly 2A), catalytic subunit, alpha isoform	
Immunogen Catalog Number: AG4294	Calculated MW: 309 aa, 36 kDa	
	Observed MW: 36 kDa	

Applications

Tested Applications:
WB, Indirect ELISA

Species Specificity:
human

Background Information

PPP2CA, also named as RP-C and PP2A-alpha, belongs to the PPP phosphatase family and PP-1 subfamily. PP2A can modulate the activity of phosphorylase B kinase casein kinase 2, mitogen-stimulated S6 kinase, and MAP-2 kinase. PP2A activity was modestly decreased in AML patients harboring C-KIT/WT. PP2A is a target for C-KIT/TKD and implicated the potential efficacy of therapies targeting PP2A in such AML in future.

Storage

Storage:
Store at -80°C.

Storage Buffer:
PBS Only

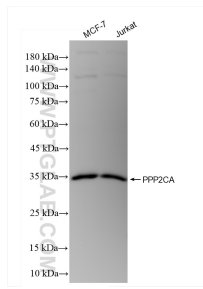
For technical support and original validation data for this product please contact:

T: 1 (888) 4PTGLAB (1-888-478-4522) (toll free in USA), or 1(312) 455-8498 (outside USA)

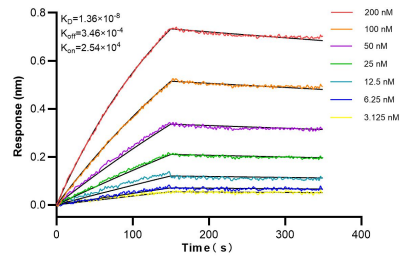
E: proteintech@ptglab.com
W: ptglab.com

This product is exclusively available under Proteintech Group brand and is not available to purchase from any other manufacturer.

Selected Validation Data



Various lysates were subjected to SDS PAGE followed by western blot with 84155-5-RR (PPP2CA antibody) at dilution of 1:5000 incubated at room temperature for 1.5 hours. This data was developed using the same antibody clone with 84155-5-PBS in a different storage buffer formulation.



Biolayer interferometry (BLI) kinetic assays of 84155-5-RR against Human PPP2CA were performed. The affinity constant is 13.6 nM.