

For Research Use Only

PPP2CA Recombinant antibody

Catalog Number: 84155-2-RR



Basic Information

Catalog Number: 84155-2-RR	GenBank Accession Number: BC031696	Purification Method: Protein A purification
Size: 100ul , Concentration: 1000 µg/ml by Nanodrop;	GeneID (NCBI): 5515	CloneNo.: 241112A6
Source: Rabbit	UNIPROT ID: P67775	Recommended Dilutions: WB 1:5000-1:50000
Isotype: IgG	Full Name: protein phosphatase 2 (formerly 2A), catalytic subunit, alpha isoform	
Immunogen Catalog Number: AG4294	Calculated MW: 309 aa, 36 kDa	
	Observed MW: 36 kDa	

Applications

Tested Applications:
WB, ELISA

Species Specificity:
human, mouse

Positive Controls:
WB : Jurkat cells, HeLa cells, HEK-293T cells, MCF-7 cells, mouse brain tissue

Background Information

PPP2CA, also named as RP-C and PP2A-alpha, belongs to the PPP phosphatase family and PP-1 subfamily. PP2A can modulate the activity of phosphorylase B kinase casein kinase 2, mitogen-stimulated S6 kinase, and MAP-2 kinase. PP2A activity was modestly decreased in AML patients harboring C-KIT/WT. PP2A is a target for C-KIT/TKD and implicated the potential efficacy of therapies targeting PP2A in such AML in future.

Storage

Storage:
Store at -20°C. Stable for one year after shipment.

Storage Buffer:
PBS with 0.02% sodium azide and 50% glycerol pH 7.3.

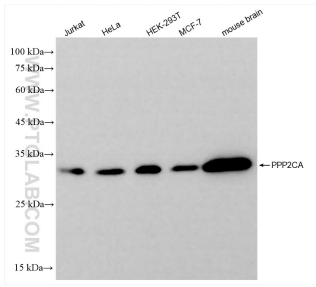
Aliquoting is unnecessary for -20°C storage

*** 20ul sizes contain 0.1% BSA

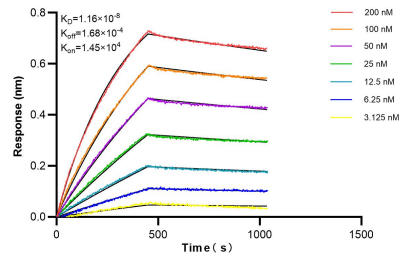
For technical support and original validation data for this product please contact:
T: 1 (888) 4PTGLAB (1-888-478-4522) (toll free in USA), or 1(312) 455-8498 (outside USA)
E: proteintech@ptglab.com
W: ptglab.com

This product is exclusively available under Proteintech Group brand and is not available to purchase from any other manufacturer.

Selected Validation Data



Various lysates were subjected to SDS PAGE followed by western blot with 84155-2-RR (PPP2CA antibody) at dilution of 1:10000 incubated at room temperature for 1.5 hours.



Biolayer interferometry (BLI) kinetic assays of 84155-2-RR against Human PPP2CA were performed. The affinity constant is 11.6 nM.