

For Research Use Only

PPP2CA Recombinant antibody, PBS Only (Capture)

Catalog Number: 84155-2-PBS



Basic Information

Catalog Number: 84155-2-PBS	GenBank Accession Number: BC031696	Purification Method: Protein A purification
Size: 100ug, Concentration: 1 mg/ml by Nanodrop;	GeneID (NCBI): 5515	CloneNo.: 241112A6
Source: Rabbit	UNIPROT ID: P67775	
Isotype: IgG	Full Name: protein phosphatase 2 (formerly 2A), catalytic subunit, alpha isoform	
Immunogen Catalog Number: AG4294	Calculated MW: 309 aa, 36 kDa	
	Observed MW: 36 kDa	

Applications

Tested Applications:
WB, Cytometric bead array, Indirect ELISA

Species Specificity:
human, mouse

Product Information

84155-2-PBS targets PPP2CA as part of a matched antibody pair:

MP01058-2: 84155-2-PBS capture and 84155-4-PBS detection (validated in Cytometric bead array)

Unconjugated rabbit recombinant monoclonal antibody in PBS only (BSA and azide free) storage buffer at a concentration of 1 mg/mL, ready for conjugation. Created using Proteintech's proprietary in-house recombinant technology. Recombinant production enables unrivalled batch-to-batch consistency, easy scale-up, and future security of supply.

This conjugation ready format makes antibodies ideal for use in many applications including: ELISAs, multiplex assays requiring matched pairs, mass cytometry, and multiplex imaging applications. Antibody use should be optimized by the end user for each application and assay.

Background Information

PPP2CA, also named as RP-C and PP2A-alpha, belongs to the PPP phosphatase family and PP-1 subfamily. PP2A can modulate the activity of phosphorylase B kinase casein kinase 2, mitogen-stimulated 56 kinase, and MAP-2 kinase. PP2A activity was modestly decreased in AML patients harboring C-KIT/WT. PP2A is a target for C-KIT/TKD and implicated the potential efficacy of therapies targeting PP2A in such AML in future.

Storage

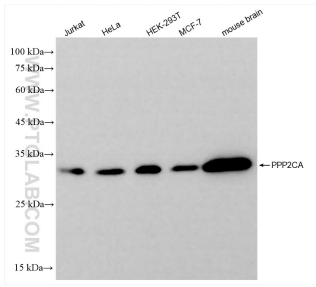
Storage:
Store at -80°C.

Storage Buffer:
PBS Only

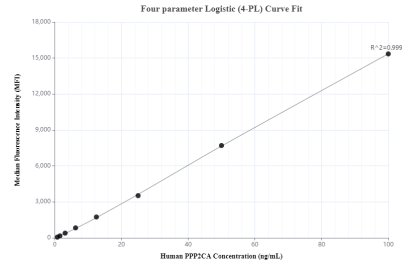
For technical support and original validation data for this product please contact:
T: 1 (888) 4PTGLAB (1-888-478-4522) (toll free in USA), or 1(312) 455-8498 (outside USA)
E: proteintech@ptglab.com
W: ptglab.com

This product is exclusively available under Proteintech Group brand and is not available to purchase from any other manufacturer.

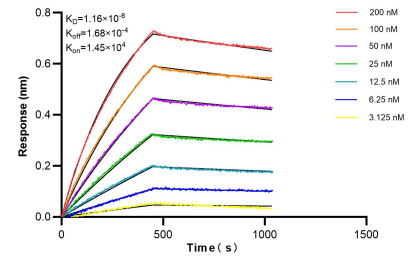
Selected Validation Data



Various lysates were subjected to SDS PAGE followed by western blot with 84155-2-RR (PPP2CA antibody) at dilution of 1:10000 incubated at room temperature for 1.5 hours. This data was developed using the same antibody clone with 84155-2-PBS in a different storage buffer formulation.



Cytometric bead array standard curve of MP01058-2, PPP2CA Recombinant Matched Antibody Pair, PBS Only. Capture antibody: 84155-2-PBS. Detection antibody: 84155-4-PBS. Standard: Ag4294. Range: 0.781-100 ng/mL.



Bi-layer interferometry (BLI) kinetic assays of 84155-2-RR against Human PPP2CA were performed. The affinity constant is 11.6 nM.