

For Research Use Only

AMH Recombinant antibody

Catalog Number: 84153-5-RR



Basic Information

Catalog Number: 84153-5-RR	GenBank Accession Number: BC049194	Purification Method: Protein A purification
Size: 100ul , Concentration: 1000 µg/ml by Nanodrop;	GeneID (NCBI): 268	CloneNo.: 241148C8
Source: Rabbit	UNIPROT ID: P03971	Recommended Dilutions: WB 1:1000-1:4000 IHC 1:200-1:800
Isotype: IgG	Full Name: anti-Mullerian hormone	
Immunogen Catalog Number: AG5670	Calculated MW: 59 kDa	
	Observed MW: 60-65 kDa	

Applications

Tested Applications:
WB, IHC, ELISA

Species Specificity:
human, mouse

**Note-IHC: suggested antigen retrieval with
TE buffer pH 9.0; (*) Alternatively, antigen
retrieval may be performed with citrate
buffer pH 6.0**

Positive Controls:

WB : LNCaP cells, mouse ovary tissue

IHC : human ovary cancer tissue,

Background Information

Anti-Müllerian hormone (AMH), also called Müllerian-inhibiting substance (MIS), is a hormone that is best known for its production by fetal testes in mammals and as the inhibitor of Müllerian duct development in males. AMH is also expressed in granulosa cells of preantral and small antral follicles in the ovary. More recently, AMH has been studied for its role in ovarian folliculogenesis and as a potential marker of ovarian reserve. The deduced protein sequence of the AMH monomer contains a 25 amino acid secretion specific signal peptide and a monomeric protein of 535 amino acids that, when glycosylated at two glycosylation sites, has a molecular weight of 65-70 kDa.

Storage

Storage:

Store at -20°C. Stable for one year after shipment.

Storage Buffer:

PBS with 0.02% sodium azide and 50% glycerol pH 7.3.

Aliquoting is unnecessary for -20°C storage

***** 20ul sizes contain 0.1% BSA**

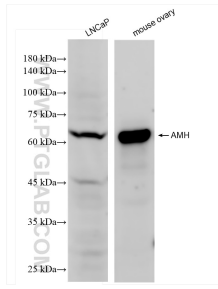
For technical support and original validation data for this product please contact:

T: 1 (888) 4PTGLAB (1-888-478-4522) (toll free
in USA), or 1(312) 455-8498 (outside USA)

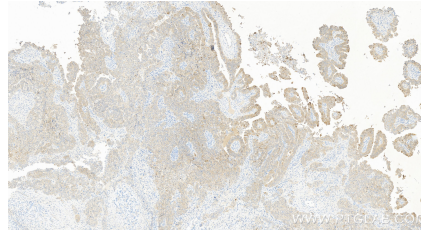
E: proteintech@ptglab.com
W: ptglab.com

**This product is exclusively available under Proteintech
Group brand and is not available to purchase from any
other manufacturer.**

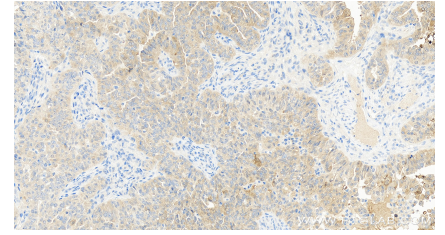
Selected Validation Data



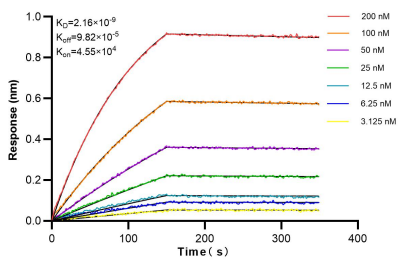
Various lysates were subjected to SDS PAGE followed by western blot with 84153-5-RR (AMH antibody) at dilution of 1:2000 incubated at room temperature for 1.5 hours.



Immunohistochemical analysis of paraffin-embedded human ovary cancer tissue slide using 84153-5-RR (AMH antibody) at dilution of 1:400 (under 10x lens). Heat mediated antigen retrieval with Tris-EDTA buffer (pH 9.0).



Immunohistochemical analysis of paraffin-embedded human ovary cancer tissue slide using 84153-5-RR (AMH antibody) at dilution of 1:400 (under 40x lens). Heat mediated antigen retrieval with Tris-EDTA buffer (pH 9.0).



Biolayer interferometry (BLI) kinetic assays of 84153-5-RR against Human AMH were performed. The affinity constant is 2.16 nM.