

For Research Use Only

COX-1/Cyclooxygenase-1 Recombinant antibody, PBS Only (Capture/Detector)

Catalog Number: 84151-2-PBS



Basic Information

Catalog Number: 84151-2-PBS	GenBank Accession Number: BC029840	Purification Method: Protein A purification
Size: 100ug, Concentration: 1 mg/ml by Nanodrop;	GeneID (NCBI): 5742	CloneNo.: 241373B7
Source: Rabbit	UNIPROT ID: P23219	
Isotype: IgG	Full Name: prostaglandin-endoperoxide synthase 1 (prostaglandin G/H synthase and cyclooxygenase)	
Immunogen Catalog Number: AG4055	Calculated MW: 599 aa, 69 kDa	

Applications

Tested Applications:
Cytometric bead array, Sandwich ELISA, Indirect ELISA, Sample test

Species Specificity:
human

Product Information

84151-2-PBS targets COX-1/Cyclooxygenase-1 as part of a matched antibody pair:

MP01068-2: 84151-2-PBS capture and 84151-1-PBS detection (validated in Cytometric bead array)

MP01068-3: 84151-2-PBS capture and 84151-3-PBS detection (validated in Cytometric bead array)

MP01068-4: 84151-5-PBS capture and 84151-2-PBS detection (validated in Sandwich ELISA)

Unconjugated rabbit recombinant monoclonal antibody in PBS only (BSA and azide free) storage buffer at a concentration of 1 mg/mL, ready for conjugation. Created using Proteintech's proprietary in-house recombinant technology. Recombinant production enables unrivalled batch-to-batch consistency, easy scale-up, and future security of supply.

This conjugation ready format makes antibodies ideal for use in many applications including: ELISAs, multiplex assays requiring matched pairs, mass cytometry, and multiplex imaging applications. Antibody use should be optimized by the end user for each application and assay.

Storage

Storage:
Store at -80°C.
Storage Buffer:
PBS Only

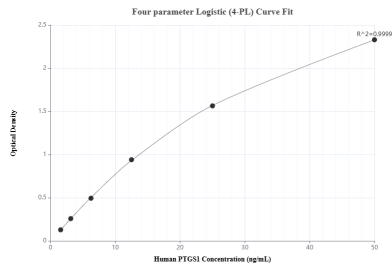
For technical support and original validation data for this product please contact:

T: 1 (888) 4PTGLAB (1-888-478-4522) (toll free in USA), or 1(312) 455-8498 (outside USA)

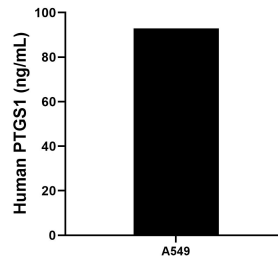
E: proteintech@ptglab.com
W: ptglab.com

This product is exclusively available under Proteintech Group brand and is not available to purchase from any other manufacturer.

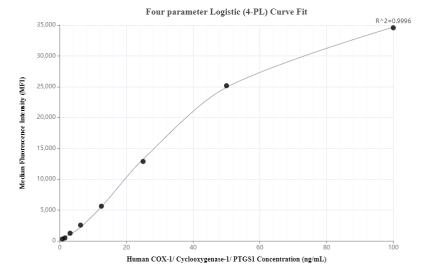
Selected Validation Data



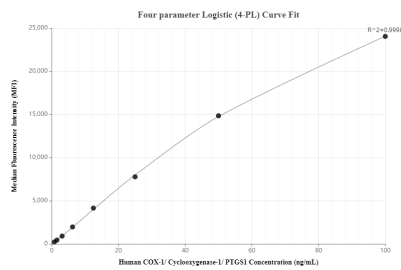
Sandwich ELISA standard curve of MP01068-4, Human COX-1/Cyclooxygenase-1 Recombinant Matched Antibody Pair - PBS only. 84151-5-PBS was coated to a plate as the capture antibody and incubated with serial dilutions of standard Ag4055. 84151-2-PBS was HRP conjugated as the detection antibody. Range: 1.56-50 ng/mL



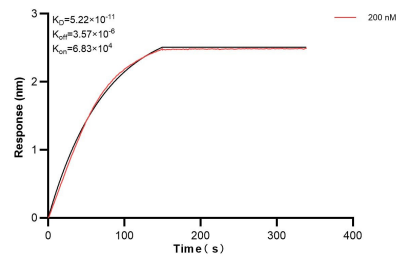
The mean COX-1/Cyclooxygenase-1 concentration was determined to be 92.92 ng/mL in A549 cell extract based on a 2.5 mg/mL extract load.



Cytometric bead array standard curve of MP01068-2, COX-1/Cyclooxygenase-1 Recombinant Matched Antibody Pair, PBS Only. Capture antibody: 84151-2-PBS. Detection antibody: 84151-1-PBS. Standard: Ag4055. Range: 0.781-100 ng/mL



Cytometric bead array standard curve of MP01068-3, COX-1/Cyclooxygenase-1 Recombinant Matched Antibody Pair, PBS Only. Capture antibody: 84151-2-PBS. Detection antibody: 84151-3-PBS. Standard: Ag4055. Range: 0.781-100 ng/mL



Biolayer interferometry (BLI) kinetic assay of 84151-2-PBS against Human COX-1/Cyclooxygenase-1 was performed. The affinity constant is 52.2 pM.