

For Research Use Only

CDC25A Recombinant antibody

Catalog Number: 84145-2-RR



Basic Information

Catalog Number: 84145-2-RR	GenBank Accession Number: NM_001789	Purification Method: Protein A purification
Size: 100ul , Concentration: 1000 ug/ml by Nanodrop;	GeneID (NCBI): 993	CloneNo.: 240813F3
Source: Rabbit	UNIPROT ID: P30304	Recommended Dilutions: IHC 1:200-1:800 IF/ICC 1:125-1:500
Isotype: IgG	Full Name: cell division cycle 25 homolog A (S. pombe)	
	Calculated MW: 59 kDa	

Applications

Tested Applications: IHC, IF/ICC, ELISA	Positive Controls:
Species Specificity: human	IHC : human stomach cancer tissue, IF/ICC : HepG2 cells,

Note-IHC: suggested antigen retrieval with TE buffer pH 9.0; (*) Alternatively, antigen retrieval may be performed with citrate buffer pH 6.0

Background Information

CDC25A belongs to the MPI phosphatase family. It is a tyrosine protein phosphatase which functions as a dosage-dependent inducer of mitotic progression. CDC25A directly dephosphorylates CDC2 and stimulates its kinase activity. It also dephosphorylates CDK2 in complex with cyclin E, in vitro. CDC25A overexpression in human cancers might contribute to tumorigenesis. This protein can be phosphorylated to reveal the molecular weight from 55 kDa to 70 kDa (PMID:21376736; 8156993). The antibody is specific to CDC25A.

Storage

Storage:
Store at -20°C. Stable for one year after shipment.
Storage Buffer:
PBS with 0.02% sodium azide and 50% glycerol pH 7.3.
Aliquoting is unnecessary for -20°C storage

*** 20ul sizes contain 0.1% BSA

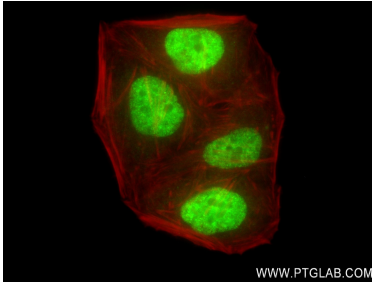
For technical support and original validation data for this product please contact:

T: 1 (888) 4PTGLAB (1-888-478-4522) (toll free
in USA), or 1(312) 455-8498 (outside USA)

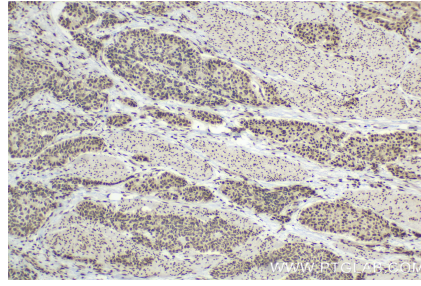
E: proteintech@ptglab.com
W: ptglab.com

This product is exclusively available under Proteintech Group brand and is not available to purchase from any other manufacturer.

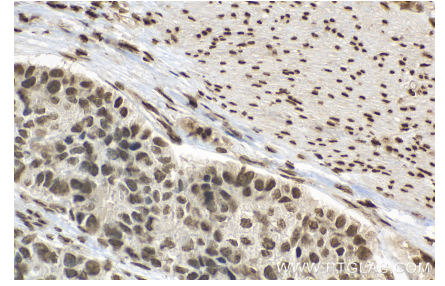
Selected Validation Data



Immunofluorescent analysis of (4% PFA) fixed HepG2 cells using CDC25A antibody (84145-2-RR, Clone: 240813F3) at dilution of 1:250 and CoraLite®488-Conjugated AffiniPure Goat Anti-Rabbit IgG(H+L) (SA00013-2), CL594-Phalloidin (red).



Immunohistochemical analysis of paraffin-embedded human stomach cancer tissue slide using 84145-2-RR (CDC25A antibody) at dilution of 1:400 (under 10x lens). Heat mediated antigen retrieval with Tris-EDTA buffer (pH 9.0).



Immunohistochemical analysis of paraffin-embedded human stomach cancer tissue slide using 84145-2-RR (CDC25A antibody) at dilution of 1:400 (under 40x lens). Heat mediated antigen retrieval with Tris-EDTA buffer (pH 9.0).



Immunofluorescent analysis of (4% PFA) fixed HepG2 cells using CDC25A antibody (84145-2-RR, Clone: 240813F3) at dilution of 1:400 and CoraLite®488-Conjugated Goat Anti-Rabbit IgG(H+L) (SA00013-2), CL594-Phalloidin (red).