

For Research Use Only

CDC25A Recombinant antibody, PBS Only

Catalog Number: 84145-2-PBS



Basic Information

Catalog Number: 84145-2-PBS	GenBank Accession Number: NM_001789	Purification Method: Protein A purification
Size: 100ug, Concentration: 1 mg/ml by Nanodrop;	GeneID (NCBI): 993	CloneNo.: 240813F3
Source: Rabbit	UNIPROT ID: P30304	
Isotype: IgG	Full Name: cell division cycle 25 homolog A (S. pombe)	
	Calculated MW: 59 kDa	

Applications

Tested Applications:
IHC, IF/ICC, ELISA

Species Specificity:
human

Background Information

CDC25A belongs to the MPI phosphatase family. It is a tyrosine protein phosphatase which functions as a dosage-dependent inducer of mitotic progression. CDC25A directly dephosphorylates CDC2 and stimulates its kinase activity. It also dephosphorylates CDK2 in complex with cyclin E, in vitro. CDC25A overexpression in human cancers might contribute to tumorigenesis. This protein can be phosphorylated to reveal the molecular weight from 55 kDa to 70 kDa (PMID:21376736; 8156993). The antibody is specific to CDC25A.

Storage

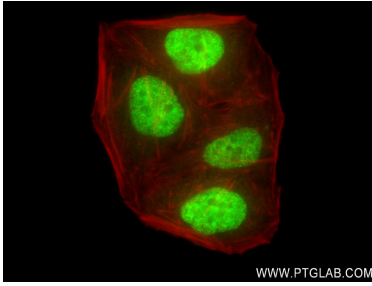
Storage:
Store at -80°C.

Storage Buffer:
PBS Only

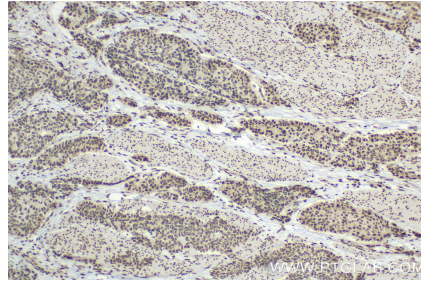
For technical support and original validation data for this product please contact:
T: 1 (888) 4PTGLAB (1-888-478-4522) (toll free in USA), or 1(312) 455-8498 (outside USA) E: proteintech@ptglab.com
W: ptglab.com

This product is exclusively available under Proteintech Group brand and is not available to purchase from any other manufacturer.

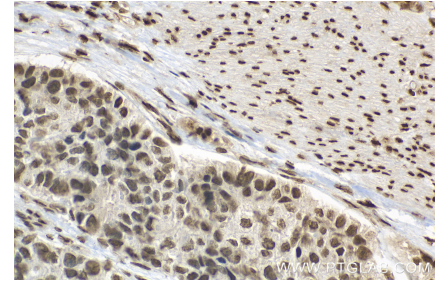
Selected Validation Data



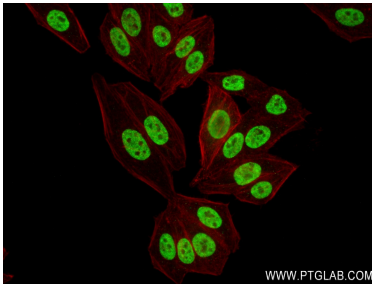
Immunofluorescent analysis of (4% PFA) fixed HepG2 cells using CDC25A antibody (84145-2-RR, Clone: 240813F3) at dilution of 1:250 and CoraLite®488-Conjugated AffiniPure Goat Anti-Rabbit IgG(H+L) (SA00013-2), CL594-Phalloidin (red). This data was developed using the same antibody clone with 84145-2-PBS in a different storage buffer formulation.



Immunohistochemical analysis of paraffin-embedded human stomach cancer tissue slide using 84145-2-RR (CDC25A antibody) at dilution of 1:400 (under 10x lens). Heat mediated antigen retrieval with Tris-EDTA buffer (pH 9.0). This data was developed using the same antibody clone with 84145-2-PBS in a different storage buffer formulation.



Immunohistochemical analysis of paraffin-embedded human stomach cancer tissue slide using 84145-2-RR (CDC25A antibody) at dilution of 1:400 (under 40x lens). Heat mediated antigen retrieval with Tris-EDTA buffer (pH 9.0). This data was developed using the same antibody clone with 84145-2-PBS in a different storage buffer formulation.



Immunofluorescent analysis of (4% PFA) fixed HepG2 cells using CDC25A antibody (84145-2-RR, Clone: 240813F3) at dilution of 1:400 and CoraLite®488-Conjugated Goat Anti-Rabbit IgG(H+L) (SA00013-2), CL594-Phalloidin (red). This data was developed using the same antibody clone with 84145-2-PBS in a different storage buffer formulation.