

For Research Use Only

IL-1 beta Recombinant antibody

Catalog Number: 84136-5-RR



Basic Information

Catalog Number: 84136-5-RR	GenBank Accession Number: NM_008361.4	Purification Method: Protein A purification
Size: 100ul , Concentration: 1000 ug/ml by Nanodrop;	GeneID (NCBI): 16176	CloneNo.: 241364D5
Source: Rabbit	UNIPROT ID: P10749	Recommended Dilutions: WB 1:5000-1:50000
Isotype: IgG	Full Name: interleukin 1 beta	
	Calculated MW: 31kDa	
	Observed MW: 31 kDa	

Applications

Tested Applications: WB, ELISA	Positive Controls: WB : LPS and Brefeldin A treated THP-1 cells,
Species Specificity: human, mouse	

Background Information

Interleukin-1, produced mainly by blood monocytes, mediates the panoply of host reactions collectively known as acute phase response. It is identical to endogenous pyrogen. The multiple biologic activities that define IL1 are properties of a 15- to 18-kD protein that is derived from a 30- to 35-kD precursor. Interleukin 1 β (IL-1 β) is a member of the interleukin 1 cytokine family. It is a pro-inflammatory cytokine against infection, playing an important role in the pathogenesis of cancers. It signals through various adaptor proteins and kinases that lead to activation of numerous downstream targets.

Storage

Storage:
Store at -20°C. Stable for one year after shipment.
Storage Buffer:
PBS with 0.02% sodium azide and 50% glycerol pH 7.3.
Aliquoting is unnecessary for -20°C storage

*** 20ul sizes contain 0.1% BSA

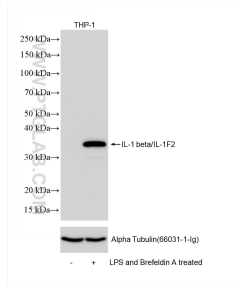
For technical support and original validation data for this product please contact:

T: 1 (888) 4PTGLAB (1-888-478-4522) (toll free in USA), or 1(312) 455-8498 (outside USA)

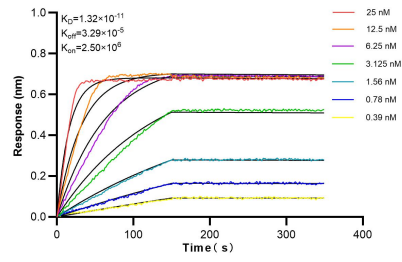
E: proteintech@ptglab.com
W: ptglab.com

This product is exclusively available under Proteintech Group brand and is not available to purchase from any other manufacturer.

Selected Validation Data



LPS and Brefeldin A treated THP-1 cells were subjected to SDS PAGE followed by western blot with 84136-5-RR (IL-1 beta antibody) at dilution of 1:10000 incubated at room temperature for 1.5 hours.



Biolayer interferometry (BLI) kinetic assays of 84136-5-RR against Mouse IL-1 beta were performed. The affinity constant is 13.2 pM.