

For Research Use Only

# Mouse IL-1 beta Recombinant antibody, PBS Only

Catalog Number: 84136-5-PBS



## Basic Information

<b>Catalog Number:</b> 84136-5-PBS	<b>GenBank Accession Number:</b> NM_008361.4	<b>Purification Method:</b> Protein A purification
<b>Size:</b> 100ug , Concentration: 1 mg/ml by Nanodrop;	<b>GeneID (NCBI):</b> 16176	<b>CloneNo.:</b> 241364D5
<b>Source:</b> Rabbit	<b>UNIPROT ID:</b> P10749	
<b>Isotype:</b> IgG	<b>Full Name:</b> interleukin 1 beta	
	<b>Calculated MW:</b> 31kDa	
	<b>Observed MW:</b> 31 kDa	

## Applications

**Tested Applications:**  
WB, Indirect ELISA

**Species Specificity:**  
human, mouse

## Background Information

Interleukin-1, produced mainly by blood monocytes, mediates the panoply of host reactions collectively known as acute phase response. It is identical to endogenous pyrogen. The multiple biologic activities that define IL1 are properties of a 15- to 18-kD protein that is derived from a 30- to 35-kD precursor. Interleukin 1 $\beta$  (IL-1B) is a member of the interleukin 1 cytokine family. It is a pro-inflammatory cytokine against infection, playing an important role in the pathogenesis of cancers. It signals through various adaptor proteins and kinases that lead to activation of numerous downstream targets.

## Storage

**Storage:**  
Store at -80°C.

**Storage Buffer:**  
PBS Only

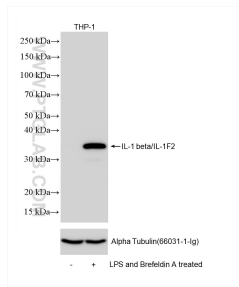
For technical support and original validation data for this product please contact:

T: 1 (888) 4PTGLAB (1-888-478-4522) (toll free  
in USA), or 1(312) 455-8498 (outside USA)

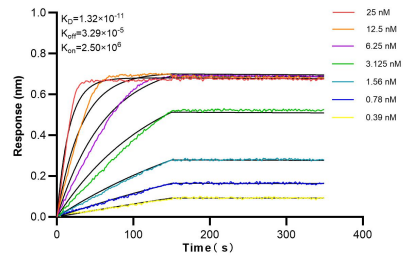
E: [proteintech@ptglab.com](mailto:proteintech@ptglab.com)  
W: [ptglab.com](http://ptglab.com)

**This product is exclusively available under Proteintech Group brand and is not available to purchase from any other manufacturer.**

## Selected Validation Data



LPS and Brefeldin A treated THP-1 cells were subjected to SDS PAGE followed by western blot with 84136-5-RR (IL-1 beta antibody) at dilution of 1:10000 incubated at room temperature for 1.5 hours. This data was developed using the same antibody clone with 84136-5-PBS in a different storage buffer formulation.



Biolayer interferometry (BLI) kinetic assays of 84136-5-RR against Mouse IL-1 beta were performed. The affinity constant is 13.2 pM.