

For Research Use Only

# EIF3F Recombinant antibody

Catalog Number: 84131-2-RR



## Basic Information

<b>Catalog Number:</b> 84131-2-RR	<b>GenBank Accession Number:</b> BC000490	<b>Purification Method:</b> Protein A purification
<b>Size:</b> 100ul , Concentration: 1000 ug/ml by Nanodrop;	<b>GeneID (NCBI):</b> 8665	<b>CloneNo.:</b> 240894D2
<b>Source:</b> Rabbit	<b>UNIPROT ID:</b> O00303	<b>Recommended Dilutions:</b> WB 1:5000-1:50000 IF/ICC 1:125-1:500
<b>Isotype:</b> IgG	<b>Full Name:</b> eukaryotic translation initiation factor 3, subunit F	
<b>Immunogen Catalog Number:</b> AG34849	<b>Calculated MW:</b> 38 kDa	
	<b>Observed MW:</b> 40-45 kDa	

## Applications

<b>Tested Applications:</b> WB, IF/ICC, FC (Intra), ELISA	<b>Positive Controls:</b> WB : U2OS cells, HeLa cells
<b>Species Specificity:</b> human	<b>IF/ICC :</b> HeLa cells,

## Background Information

EIF3F (eukaryotic translation initiation factor 3 subunit F) is a protein that plays an important role in eukaryotic cells and is an integral part of the translation initiation factor 3(Eif3) complex. EIF3 is a complex of at least 10 distinct subunits and is the largest translation initiation factor in eukaryotes.

## Storage

**Storage:**  
Store at -20°C. Stable for one year after shipment.  
**Storage Buffer:**  
PBS with 0.02% sodium azide and 50% glycerol pH 7.3.  
**Aliquoting is unnecessary for -20°C storage**

\*\*\* 20ul sizes contain 0.1% BSA

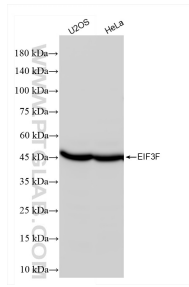
For technical support and original validation data for this product please contact:

T: 1 (888) 4PTGLAB (1-888-478-4522) (toll free in USA), or 1(312) 455-8498 (outside USA)

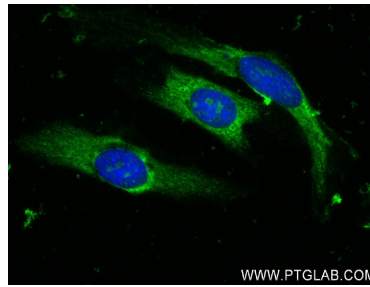
E: [proteintech@ptglab.com](mailto:proteintech@ptglab.com)  
W: [ptglab.com](http://ptglab.com)

This product is exclusively available under Proteintech Group brand and is not available to purchase from any other manufacturer.

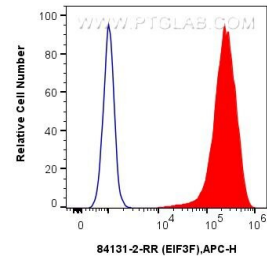
## Selected Validation Data



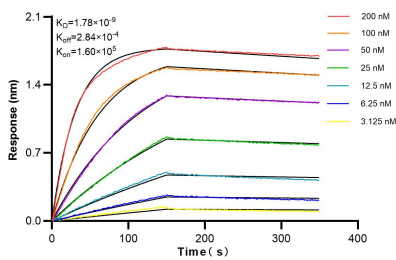
Various lysates were subjected to SDS PAGE followed by western blot with 84131-2-RR (EIF3F antibody) at dilution of 1:10000 incubated at room temperature for 1.5 hours.



Immunofluorescent analysis of (-20°C Ethanol) fixed HeLa cells using EIF3F antibody (84131-2-RR, Clone: 240894D2 ) at dilution of 1:250 and CoraLite®488-Conjugated Goat Anti-Rabbit IgG(H+L) (SA00013-2).



$1 \times 10^6$  HeLa cells were intracellularly stained with 0.25  $\mu$ g EIF3F Recombinant antibody (84131-2-RR, Clone:240894D2) and APC-Conjugated Goat Anti-Rabbit IgG(H+L)(red), or 0.25  $\mu$ g Isotype Control (blue). Cells were fixed with 4% PFA and permeabilized with Flow Cytometry Perm Buffer (PF00011-C).



Bi-layer interferometry (BLI) kinetic assays of 84131-2-RR against Human EIF3F were performed. The affinity constant is 1.78 nM.