

For Research Use Only

EIF3F Recombinant antibody, PBS Only (Capture/Detector)

Catalog Number: 84131-2-PBS



Basic Information

Catalog Number: 84131-2-PBS	GenBank Accession Number: BC000490	Purification Method: Protein A purification
Size: 100ug, Concentration: 1 mg/ml by Nanodrop;	GeneID (NCBI): 8665	CloneNo.: 240894D2
Source: Rabbit	UNIPROT ID: O00303	
Isotype: IgG	Full Name: eukaryotic translation initiation factor 3, subunit F	
Immunogen Catalog Number: AG34849	Calculated MW: 38 kDa	
	Observed MW: 40-45 kDa	

Applications

Tested Applications:
WB, IF/ICC, FC (Intra), Cytometric bead array,
Sandwich ELISA, Indirect ELISA, Sample test

Species Specificity:
human

Product Information

84131-2-PBS targets EIF3F as part of a matched antibody pair:

MP01038-1: 84131-2-PBS capture and 84131-1-PBS detection (validated in Cytometric bead array)

MP01038-2: 84131-2-PBS capture and 84131-3-PBS detection (validated in Cytometric bead array)

MP01038-4: 84131-1-PBS capture and 84131-2-PBS detection (validated in Sandwich ELISA)

Unconjugated rabbit recombinant monoclonal antibody in PBS only (BSA and azide free) storage buffer at a concentration of 1 mg/mL, ready for conjugation. Created using Proteintech's proprietary in-house recombinant technology. Recombinant production enables unrivalled batch-to-batch consistency, easy scale-up, and future security of supply.

This conjugation ready format makes antibodies ideal for use in many applications including: ELISAs, multiplex assays requiring matched pairs, mass cytometry, and multiplex imaging applications. Antibody use should be optimized by the end user for each application and assay.

Background Information

EIF3F (eukaryotic translation initiation factor 3 subunit F) is a protein that plays an important role in eukaryotic cells and is an integral part of the translation initiation factor 3 (Eif3) complex. EIF3 is a complex of at least 10 distinct subunits and is the largest translation initiation factor in eukaryotes.

Storage

Storage:
Store at -80°C.
Storage Buffer:
PBS Only

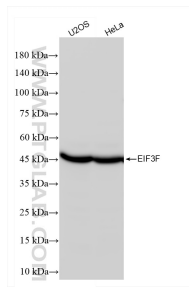
For technical support and original validation data for this product please contact:

T: 1 (888) 4PTGLAB (1-888-478-4522) (toll free
in USA), or 1(312) 455-8498 (outside USA)

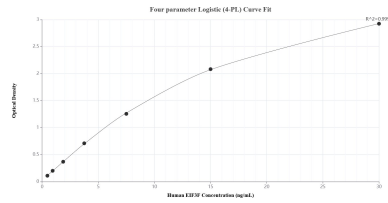
E: proteintech@ptglab.com
W: ptglab.com

This product is exclusively available under Proteintech Group brand and is not available to purchase from any other manufacturer.

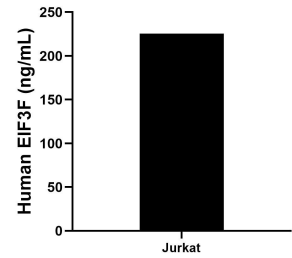
Selected Validation Data



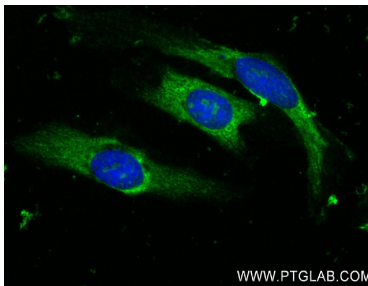
Various lysates were subjected to SDS PAGE followed by western blot with 84131-2-RR (EIF3F antibody) at dilution of 1:10000 incubated at room temperature for 1.5 hours. This data was developed using the same antibody clone with 84131-2-PBS in a different storage buffer formulation.



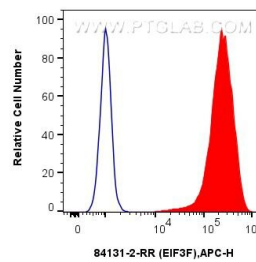
Sandwich ELISA standard curve of MP01038-4, Human EIF3F Recombinant Matched Antibody Pair - PBS only. 84131-1-PBS was coated to a plate as the capture antibody and incubated with serial dilutions of standard Ag34849. 84131-2-PBS was HRP conjugated as the detection antibody. Range: 0.469-30 ng/mL.



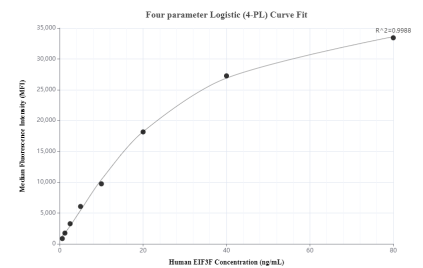
The mean EIF3F concentration was determined to be 225.37 ng/mL in Jurkat cell extract based on a 1.60 mg/mL extract load.



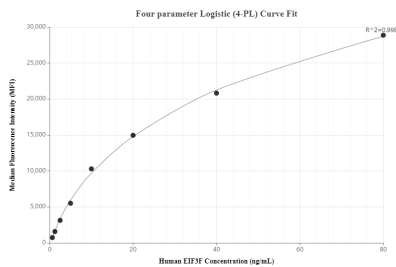
Immunofluorescent analysis of (-20°C Ethanol) fixed HeLa cells using EIF3F antibody (84131-2-RR, Clone: 240894D2) at dilution of 1:250 and CoraLite@488-Conjugated Goat Anti-Rabbit IgG(H+L) (SA00013-2). This data was developed using the same antibody clone with 84131-2-PBS in a different storage buffer formulation.



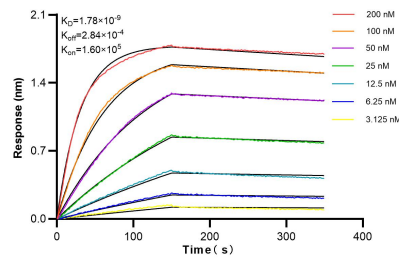
1×10^6 HeLa cells were intracellularly stained with 0.25 ug EIF3F Recombinant antibody (84131-2-RR, Clone:240894D2) and APC-Conjugated Goat Anti-Rabbit IgG(H+L)(red), or 0.25 ug Isotype Control (blue). Cells were fixed with 4% PFA and permeabilized with Flow Cytometry Perm Buffer (PF00011-C). This data was developed using the same antibody clone with 84131-2-PBS in a different storage buffer formulation.



Cytometric bead array standard curve of MP01038-1, EIF3F Recombinant Matched Antibody Pair, PBS Only. Capture antibody: 84131-2-PBS. Detection antibody: 84131-1-PBS. Standard: Ag34849. Range: 0.625-80 ng/mL.



Cytometric bead array standard curve of MP01038-2, EIF3F Recombinant Matched Antibody Pair, PBS Only. Capture antibody: 84131-2-PBS. Detection antibody: 84131-3-PBS. Standard: Ag34849. Range: 0.625-80 ng/mL.



Biolayer interferometry (BLI) kinetic assays of 84131-2-RR against Human EIF3F were performed. The affinity constant is 1.78 nM.