

For Research Use Only

PPID Recombinant antibody

Catalog Number: 84115-6-RR



Basic Information

| | | |
|--|---|---|
| Catalog Number: 84115-6-RR | GenBank Accession Number: BC030707 | Purification Method: Protein A purification |
| Size: 100ul , Concentration: 1000 µg/ml by Nanodrop; | GeneID (NCBI): 5481 | CloneNo.: 241361E4 |
| Source: Rabbit | UNIPROT ID: Q08752 | Recommended Dilutions: WB 1:5000-1:50000 |
| Isotype: IgG | Full Name: peptidylprolyl isomerase D | |
| Immunogen Catalog Number: AG3409 | Calculated MW: 370 aa, 41 kDa | |
| | Observed MW: 41 kDa | |

Applications

Tested Applications:
WB, FC (Intra), ELISA

Species Specificity:
human, mouse, rat

Positive Controls:
WB : A549 cells, MCF-7 cells, Jurkat cells, NIH/3T3 cells, mouse brain tissue, rat brain tissue

Background Information

PPID (Peptidyl-prolyl cis-trans isomerase D) is also named CYP40, CYPD, and belongs to the cyclophilin-type PPIase family, which accelerates the folding of proteins. It catalyzes the cis-trans isomerization of proline imidic peptide bonds in oligopeptides. The inactivation of the Ppid gene rescued the disease phenotype of Col6a1 deficiency (PMID:19293339). This PPID antibody detected a strong band at an apparent molecular mass of 41 kDa and a weak band at 70 kDa due to crosslink (PMID: 33320090, 29097228).

Storage

Storage:
Store at -20°C. Stable for one year after shipment.

Storage Buffer:
PBS with 0.02% sodium azide and 50% glycerol pH 7.3.

Aliquoting is unnecessary for -20°C storage

*** 20ul sizes contain 0.1% BSA

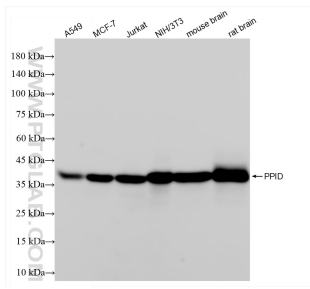
For technical support and original validation data for this product please contact:

T: 1 (888) 4PTGLAB (1-888-478-4522) (toll free in USA), or 1(312) 455-8498 (outside USA)

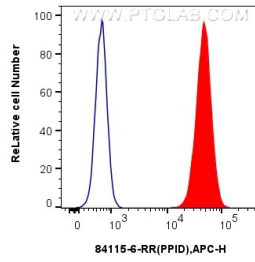
E: proteintech@ptglab.com
W: ptglab.com

This product is exclusively available under Proteintech Group brand and is not available to purchase from any other manufacturer.

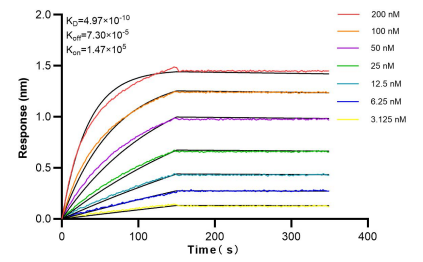
Selected Validation Data



Various lysates were subjected to SDS PAGE followed by western blot with 84115-6-RR (PPID antibody) at dilution of 1:10000 incubated at room temperature for 1.5 hours.



1×10^6 HepG2 cells were intracellularly stained with 0.25 μ g PPID Recombinant antibody (84115-6-RR, Clone:241361E4) and APC-Conjugated Goat Anti-Rabbit IgG(H+L)(red), or 0.25 μ g Isotype Control (blue). Cells were fixed with 4% PFA and permeabilized with Flow Cytometry Perm Buffer (PF00011-C).



Bioluminescence resonance energy transfer (BRET) kinetic assays of 84115-6-RR against Human PPID were performed. The affinity constant is 0.497 nM.