

For Research Use Only

PPID Recombinant antibody, PBS Only (Capture)

Catalog Number: 84115-1-PBS



Basic Information

Catalog Number: 84115-1-PBS	GenBank Accession Number: BC030707	Purification Method: Protein A purification
Size: 100ug, Concentration: 1 mg/ml by Nanodrop;	GeneID (NCBI): 5481	CloneNo.: 241361B2
Source: Rabbit	UNIPROT ID: Q08752	
Isotype: IgG	Full Name: peptidylprolyl isomerase D	
Immunogen Catalog Number: AG3409	Calculated MW: 370 aa, 41 kDa	
	Observed MW: 41 kDa	

Applications

Tested Applications:
WB, FC (Intra), Cytometric bead array, Indirect ELISA

Species Specificity:
human

Product Information

84115-1-PBS targets PPID as part of a matched antibody pair:

MP01018-1: 84115-1-PBS capture and 84115-5-PBS detection (validated in Cytometric bead array)

MP01018-2: 84115-1-PBS capture and 84115-2-PBS detection (validated in Cytometric bead array)

Unconjugated rabbit recombinant monoclonal antibody in PBS only (BSA and azide free) storage buffer at a concentration of 1 mg/mL, ready for conjugation. Created using Proteintech's proprietary in-house recombinant technology. Recombinant production enables unrivalled batch-to-batch consistency, easy scale-up, and future security of supply.

This conjugation ready format makes antibodies ideal for use in many applications including: ELISAs, multiplex assays requiring matched pairs, mass cytometry, and multiplex imaging applications. Antibody use should be optimized by the end user for each application and assay.

Background Information

PPID (Peptidyl-prolyl cis-trans isomerase D) is also named CYP40, CYPD, and belongs to the cyclophilin-type PPIase family, which accelerates the folding of proteins. It catalyzes the cis-trans isomerization of proline imidic peptide bonds in oligopeptides. The inactivation of the Ppid gene rescued the disease phenotype of Col6a1 deficiency (PMID:19293339). This PPID antibody detected a strong band at an apparent molecular mass of 41 kDa and a weak band at 70 kDa due to crosslink (PMID: 33320090, 29097228).

Storage

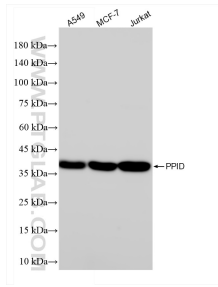
Storage:
Store at -80°C.

Storage Buffer:
PBS Only

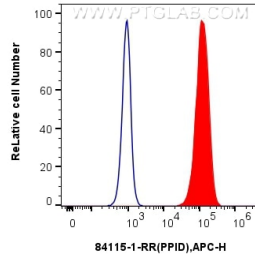
For technical support and original validation data for this product please contact:
T: 1 (888) 4PTGLAB (1-888-478-4522) (toll free in USA), or 1(312) 455-8498 (outside USA)
E: proteintech@ptglab.com
W: ptglab.com

This product is exclusively available under Proteintech Group brand and is not available to purchase from any other manufacturer.

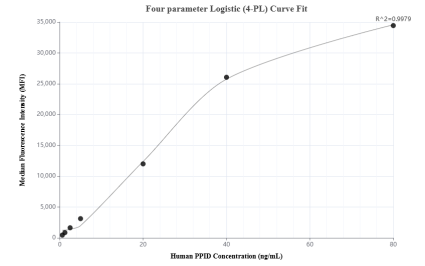
Selected Validation Data



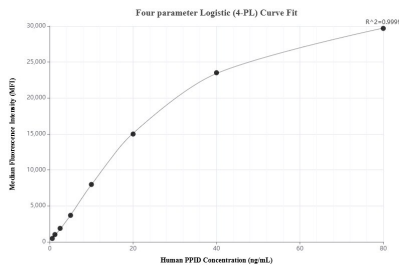
Various lysates were subjected to SDS PAGE followed by western blot with 84115-1-RR (PPID antibody) at dilution of 1:10000 incubated at room temperature for 1.5 hours. This data was developed using the same antibody clone with 84115-1-PBS in a different storage buffer formulation.



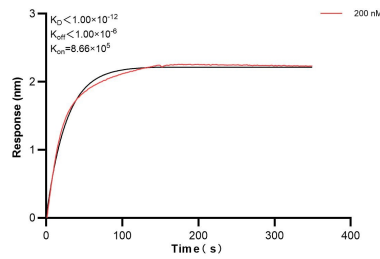
1×10^6 A431 cells were intracellularly stained with 0.25 ug PPID Recombinant Antibody (84115-1-RR, Clone:241361B2) and APC-Conjugated Goat Anti-Rabbit IgG(H+L)(red), or 0.25 ug Isotype Control (blue). Cells were fixed with 4% PFA and permeabilized with Flow Cytometry Perm Buffer (PF00011-C). This data was developed using the same antibody clone with 84115-1-PBS in a different storage buffer formulation.



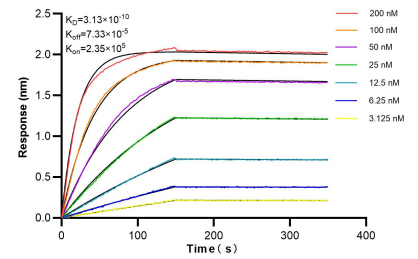
Cytometric bead array standard curve of MP01018-1, PPID Recombinant Matched Antibody Pair, PBS Only. Capture antibody: 84115-1-PBS. Detection antibody: 84115-5-PBS. Standard: Ag3409. Range: 0.625-80 ng/mL.



Cytometric bead array standard curve of MP01018-2, PPID Recombinant Matched Antibody Pair, PBS Only. Capture antibody: 84115-1-PBS. Detection antibody: 84115-2-PBS. Standard: Ag3409. Range: 0.625-80 ng/mL.



Biolayer interferometry (BLI) kinetic assay of 84115-1-PBS against Human PPID was performed. The affinity constant is below 1 pM.



Biolayer interferometry (BLI) kinetic assays of 84115-1-RR against Human PPID were performed. The affinity constant is 0.313 nM.