

For Research Use Only

Mouse E-Cadherin Recombinant antibody, PBS Only (Detector)

Catalog Number: 84111-2-PBS



Basic Information

Catalog Number: 84111-2-PBS	GenBank Accession Number: NM_009864.3	Purification Method: Protein A purification
Size: 100ug, Concentration: 1 mg/ml by Nanodrop;	GeneID (NCBI): 12550	CloneNo.: 241282A8
Source: Rabbit	UNIPROT ID: P09803	
Isotype: IgG	Full Name: cadherin 1	
	Calculated MW: 98kDa	
	Observed MW: 135 kDa	

Applications

Tested Applications:
WB, IHC, IF/ICC, Cytometric bead array, Sandwich ELISA, Indirect ELISA, Sample test

Species Specificity:
human, mouse

Product Information

84111-2-PBS targets E-Cadherin as part of a matched antibody pair:

MP01047-1: 84111-4-PBS capture and 84111-2-PBS detection (validated in Cytometric bead array)

MP01047-2: 84111-1-PBS capture and 84111-2-PBS detection (validated in Cytometric bead array, Sandwich ELISA)

MP01047-3: 84111-3-PBS capture and 84111-2-PBS detection (validated in Cytometric bead array)

Unconjugated rabbit recombinant monoclonal antibody in PBS only (BSA and azide free) storage buffer at a concentration of 1 mg/mL, ready for conjugation. Created using Proteintech's proprietary in-house recombinant technology. Recombinant production enables unrivalled batch-to-batch consistency, easy scale-up, and future security of supply.

This conjugation ready format makes antibodies ideal for use in many applications including: ELISAs, multiplex assays requiring matched pairs, mass cytometry, and multiplex imaging applications. Antibody use should be optimized by the end user for each application and assay.

Background Information

Cadherins are a family of transmembrane glycoproteins that mediate calcium-dependent cell-cell adhesion and play an important role in the maintenance of normal tissue architecture. E-cadherin (epithelial cadherin), also known as CDH1 (cadherin 1) or CAM 120/80, is a classical member of the cadherin superfamily which also include N-, P-, R-, and B-cadherins. E-cadherin is expressed on the cell surface in most epithelial tissues. The extracellular region of E-cadherin establishes calcium-dependent homophilic trans binding, providing specific interaction with adjacent cells, while the cytoplasmic domain is connected to the actin cytoskeleton through the interaction with p120-, α -, β -, and γ -catenin (plakoglobin). E-cadherin is important in the maintenance of the epithelial integrity, and is involved in mechanisms regulating proliferation, differentiation, and survival of epithelial cell. E-cadherin may also play a role in tumorigenesis. It is considered to be an invasion suppressor protein and its loss is an indicator of high tumor aggressiveness. E-cadherin is sensitive to trypsin digestion in the absence of Ca²⁺.

Storage

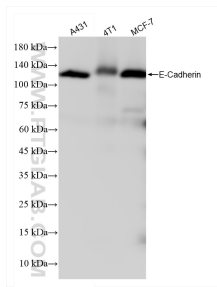
Storage:
Store at -80°C.

Storage Buffer:
PBS Only

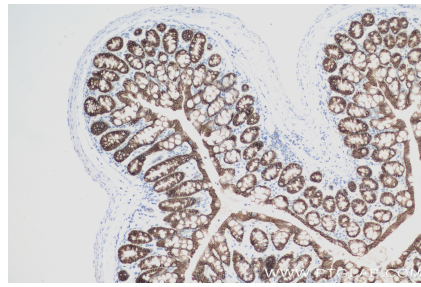
For technical support and original validation data for this product please contact:
T: 1 (888) 4PTGLAB (1-888-478-4522) (toll free in USA), or 1(312) 455-8498 (outside USA) E: proteintech@ptglab.com
W: ptglab.com

This product is exclusively available under Proteintech Group brand and is not available to purchase from any other manufacturer.

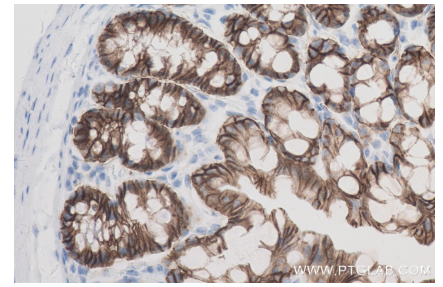
Selected Validation Data



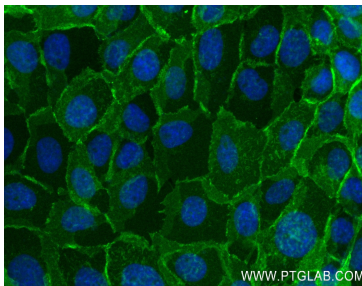
Various lysates were subjected to SDS PAGE followed by western blot with 84111-2-RR (E-Cadherin antibody) at dilution of 1:10000 incubated at room temperature for 1.5 hours. This data was developed using the same antibody clone with 84111-2-PBS in a different storage buffer formulation.



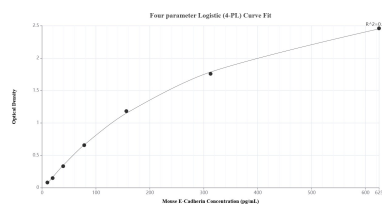
Immunohistochemical analysis of paraffin-embedded mouse colon tissue slide using 84111-2-RR (E-Cadherin antibody) at dilution of 1:1000 (under 10x lens). Heat mediated antigen retrieval with Tris-EDTA buffer (pH 9.0). This data was developed using the same antibody clone with 84111-2-PBS in a different storage buffer formulation.



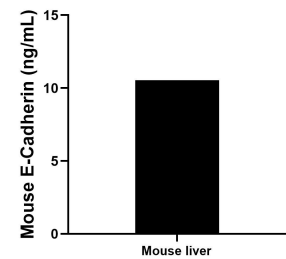
Immunohistochemical analysis of paraffin-embedded mouse colon tissue slide using 84111-2-RR (E-Cadherin antibody) at dilution of 1:1000 (under 40x lens). Heat mediated antigen retrieval with Tris-EDTA buffer (pH 9.0). This data was developed using the same antibody clone with 84111-2-PBS in a different storage buffer formulation.



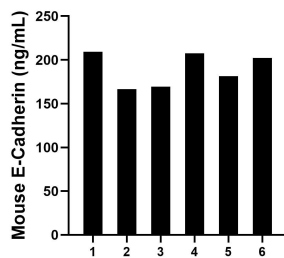
Immunofluorescent analysis of (4% PFA) fixed A431 cells using E-Cadherin antibody (84111-2-RR, Clone: 241282A8) at dilution of 1:250 and CoraLite®488-Conjugated Goat Anti-Rabbit IgG(H+L) (SA00013-2). This data was developed using the same antibody clone with 84111-2-PBS in a different storage buffer formulation.



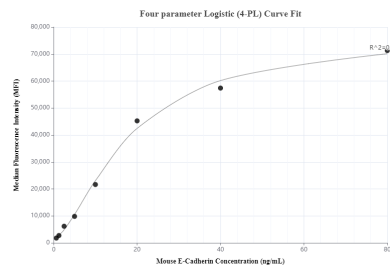
Sandwich ELISA standard curve of MP01047-2, Mouse E-Cadherin Recombinant Matched Antibody Pair - PBS only. 84111-1-PBS was coated to a plate as the capture antibody and incubated with serial dilutions of standard Eg0975. 84111-2-PBS was HRP conjugated as the detection antibody. Range: 9.77-625 pg/mL



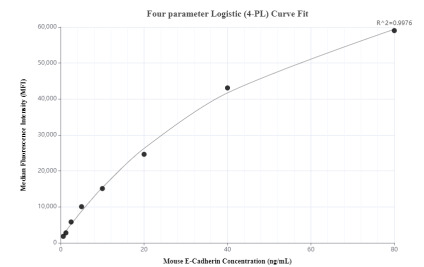
The mean E-Cadherin concentration was determined to be 10.6 ng/mL in mouse liver cell extract based on a 5.0 mg/mL extract load.



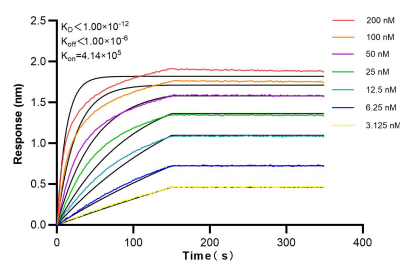
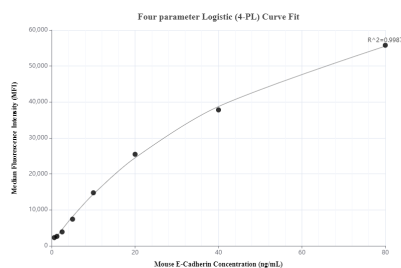
Serum of six mice was measured. The E-Cadherin concentration of detected samples was determined to be 189.4 ng/mL with a range of 166.7-209.1 ng/mL



Cytometric bead array standard curve of MP01047-1, MOUSE E-Cadherin Recombinant Matched Antibody Pair, PBS Only. Capture antibody: 84111-4-PBS. Detection antibody: 84111-2-PBS. Standard: Eg0975. Range: 0.625-80 ng/mL



Cytometric bead array standard curve of MP01047-2, MOUSE E-Cadherin Recombinant Matched Antibody Pair, PBS Only. Capture antibody: 84111-1-PBS. Detection antibody: 84111-2-PBS. Standard: Eg0975. Range: 0.625-80 ng/mL



Cytometric bead array standard curve of MP01047-3, MOUSE E-Cadherin Recombinant Matched Antibody Pair, PBS Only. Capture antibody: 84111-3-PBS. Detection antibody: 84111-2-PBS. Standard: Eg0975. Range: 0.625-80 ng/mL

Biolayer interferometry (BLI) kinetic assays of 84111-2-RR against Mouse E-Cadherin were performed. The affinity constant is below 1 pM.