

For Research Use Only

CD2 Recombinant antibody

Catalog Number: 84108-5-RR



Basic Information

Catalog Number: 84108-5-RR	GenBank Accession Number: BC033583	Purification Method: Protein A purification
Size: 100ul , Concentration: 1000 µg/ml by Nanodrop;	GeneID (NCBI): 914	CloneNo.: 241222B8
Source: Rabbit	ENSEMBL Gene ID: ENSG00000116824	Recommended Dilutions: WB 1:5000-1:50000
Isotype: IgG	UNIPROT ID: P06729	
	Full Name: CD2 molecule	
	Calculated MW: 351 aa, 39 kDa	
	Observed MW: 50 kDa	

Applications

Tested Applications: WB, ELISA	Positive Controls: WB : Jurkat cells, NK-92 cells
Species Specificity: human	

Background Information

CD2 is a cell surface glycoprotein present on a majority of thymocytes, all mature T cells and subset of NK cells but not on B lymphocytes. It is a pan T-cell marker. CD2 interacts with lymphocyte function-associated antigen (LFA-3/CD58) and CD48/BCM1 to mediate adhesion between T-cells and other cell types. CD2 is implicated in the triggering of T-cells, the cytoplasmic domain is implicated in the signaling function.

Storage

Storage:
Store at -20°C. Stable for one year after shipment.
Storage Buffer:
PBS with 0.02% sodium azide and 50% glycerol pH 7.3.
Aliquoting is unnecessary for -20°C storage

*** 20ul sizes contain 0.1% BSA

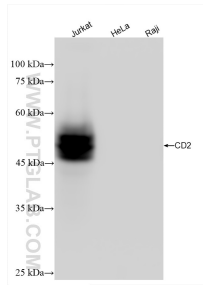
For technical support and original validation data for this product please contact:

T: 1 (888) 4PTGLAB (1-888-478-4522) (toll free in USA), or 1(312) 455-8498 (outside USA)

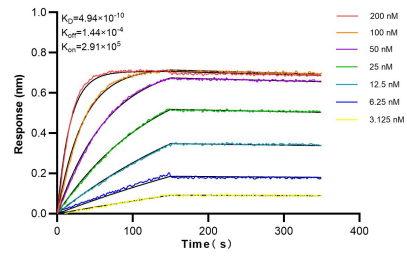
E: proteintech@ptglab.com
W: ptglab.com

This product is exclusively available under Proteintech Group brand and is not available to purchase from any other manufacturer.

Selected Validation Data



Various lysates were subjected to SDS PAGE followed by western blot with 84108-5-RR (CD2 antibody) at dilution of 1:10000 incubated at room temperature for 1.5 hours.



Biolayer interferometry (BLI) kinetic assays of 84108-5-RR against Human CD2 were performed. The affinity constant is 0.494 nM.