

For Research Use Only

CD2 Recombinant antibody, PBS Only (Detector)

Catalog Number: 84108-3-PBS



Basic Information

Catalog Number: 84108-3-PBS	GenBank Accession Number: BC033583	Purification Method: Protein A purification
Size: 100ug, Concentration: 1 mg/ml by Nanodrop;	GeneID (NCBI): 914	CloneNo.: 241222E10
Source: Rabbit	ENSEMBL Gene ID: ENSG00000116824	
Isotype: IgG	UNIPROT ID: P06729	
	Full Name: CD2 molecule	
	Calculated MW: 351 aa, 39 kDa	

Applications

Tested Applications:
IF/ICC, Cytometric bead array, Sandwich ELISA, Indirect ELISA, Sample test

Species Specificity:
human

Product Information

84108-3-PBS targets CD2 as part of a matched antibody pair:

MP01045-2: 84108-2-PBS capture and 84108-3-PBS detection (validated in Cytometric bead array)

MP01045-3: 84108-1-PBS capture and 84108-3-PBS detection (validated in Cytometric bead array)

MP01045-4: 84108-5-PBS capture and 84108-3-PBS detection (validated in Sandwich ELISA)

Unconjugated rabbit recombinant monoclonal antibody in PBS only (BSA and azide free) storage buffer at a concentration of 1 mg/mL, ready for conjugation. Created using Proteintech's proprietary in-house recombinant technology. Recombinant production enables unrivalled batch-to-batch consistency, easy scale-up, and future security of supply.

This conjugation ready format makes antibodies ideal for use in many applications including: ELISAs, multiplex assays requiring matched pairs, mass cytometry, and multiplex imaging applications. Antibody use should be optimized by the end user for each application and assay.

Background Information

CD2 is a cell surface glycoprotein present on a majority of thymocytes, all mature T cells and subset of NK cells but not on B lymphocytes. It is a pan T-cell marker. CD2 interacts with lymphocyte function-associated antigen (LFA-3/CD58) and CD48/BCM1 to mediate adhesion between T-cells and other cell types. CD2 is implicated in the triggering of T-cells, the cytoplasmic domain is implicated in the signaling function.

Storage

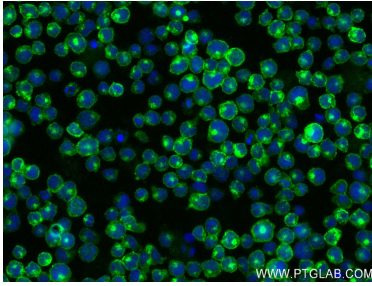
Storage:
Store at -80°C.

Storage Buffer:
PBS Only

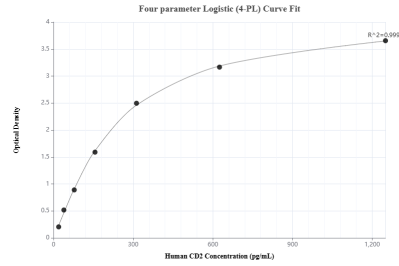
For technical support and original validation data for this product please contact:
T: 1 (888) 4PTGLAB (1-888-478-4522) (toll free in USA), or 1(312) 455-8498 (outside USA) E: proteintech@ptglab.com
W: ptglab.com

This product is exclusively available under Proteintech Group brand and is not available to purchase from any other manufacturer.

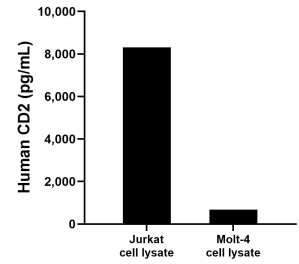
Selected Validation Data



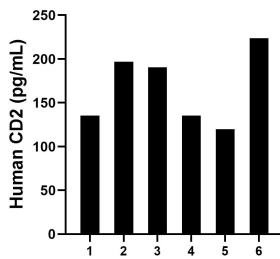
Immunofluorescent analysis of (4% PFA) fixed Jurkat cells using CD2 antibody (84108-3-RR, Clone: 241222E10) at dilution of 1:400 and CoraLite@488-Conjugated Goat Anti-Rabbit IgG(H+L) (SA00013-2). This data was developed using the same antibody clone with 84108-3-PBS in a different storage buffer formulation.



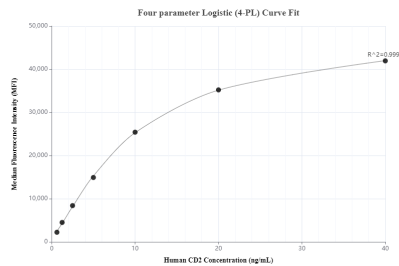
Sandwich ELISA standard curve of MP01045-4, Human CD2 Recombinant Matched Antibody Pair - PBS only. 84108-5-PBS was coated to a plate as the capture antibody and incubated with serial dilutions of standard Eg1271. 84108-3-PBS was HRP conjugated as the detection antibody. Range: 19.5-1250 pg/mL



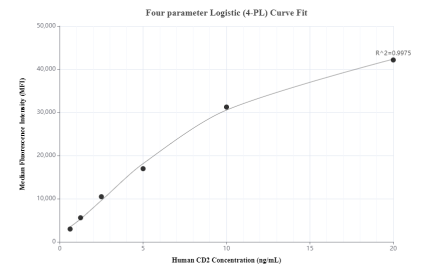
Jurkat and Molt-4 cell lysate were measured. The human CD2 concentration of detected samples was determined to be 8,318.1 pg/mL (based on a 1.0 mg/mL extract load) in Jurkat cell lysate and 679.3 pg/mL (based on a 4.5 mg/mL extract load) in Molt-4 cell lysate.



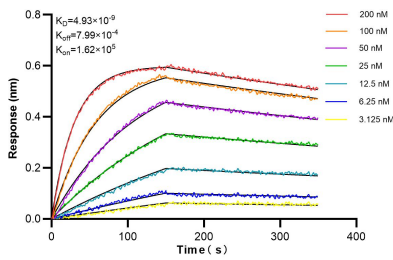
Serum of six individual healthy human donors was measured. The human CD2 concentration of detected samples was determined to be 167.0 pg/mL with a range of 119.9 - 223.9 pg/mL.



Cytometric bead array standard curve of MP01045-2, CD2 Recombinant Matched Antibody Pair, PBS Only. Capture antibody: 84108-2-PBS. Detection antibody: 84108-3-PBS. Standard: Eg1271. Range: 0.625-40 ng/mL.



Cytometric bead array standard curve of MP01045-3, CD2 Recombinant Matched Antibody Pair, PBS Only. Capture antibody: 84108-1-PBS. Detection antibody: 84108-3-PBS. Standard: Eg1271. Range: 0.625-40 ng/mL.



Biolayer interferometry (BLI) kinetic assays of 84108-3-RR against Human CD2 were performed. The affinity constant is 4.93 nM.