

For Research Use Only

Complement factor B Recombinant antibody

Catalog Number: 84101-5-RR



Basic Information

Catalog Number: 84101-5-RR	GenBank Accession Number: BC007990	Purification Method: Protein A purification
Size: 100ul , Concentration: 1000 µg/ml by Nanodrop;	GeneID (NCBI): 629	CloneNo.: 241141A8
Source: Rabbit	UNIPROT ID: P00751	Recommended Dilutions: WB 1:2000-1:10000 IHC 1:200-1:800 IF/ICC 1:200-1:500
Isotype: IgG	Full Name: complement factor B	
Immunogen Catalog Number: AG0226	Calculated MW: 86 kDa	
	Observed MW: 93-100 kDa	

Applications

Tested Applications:
WB, IHC, IF/ICC, ELISA

Species Specificity:
human, mouse, rat

Note-IHC: suggested antigen retrieval with TE buffer pH 9.0; (*) Alternatively, antigen retrieval may be performed with citrate buffer pH 6.0

Positive Controls:

WB : mouse serum, rat serum, rat plasma, human plasma

IHC : mouse liver tissue,

IF/ICC : HepG2 cells,

Background Information

Complement factor B (CFB) is a component of the alternative pathway of complement activation. Complement factor B is a 93-100 kDa glycoprotein and is cleaved into Ba (33 kDa) and Bb (60 kDa) by factor D in the presence of C3b (PMID: 11025450). The active subunit Bb is a serine protease that is associated with C3b and forms the alternative pathway for C3 convertase. Bb is involved in the proliferation of preactivated B lymphocytes, while Ba inhibits their proliferation.

Storage

Storage:

Store at -20°C. Stable for one year after shipment.

Storage Buffer:

PBS with 0.02% sodium azide and 50% glycerol pH 7.3.

Aliquoting is unnecessary for -20°C storage

*** 20ul sizes contain 0.1% BSA

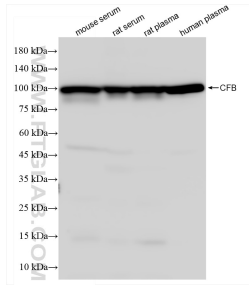
For technical support and original validation data for this product please contact:

T: 1 (888) 4PTGLAB (1-888-478-4522) (toll free in USA), or 1(312) 455-8498 (outside USA)

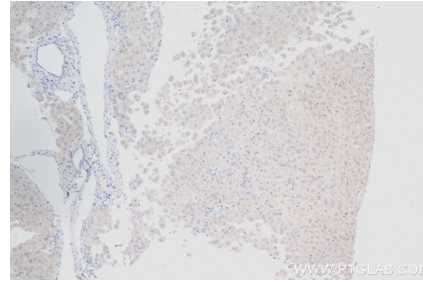
E: proteintech@ptglab.com
W: ptglab.com

This product is exclusively available under Proteintech Group brand and is not available to purchase from any other manufacturer.

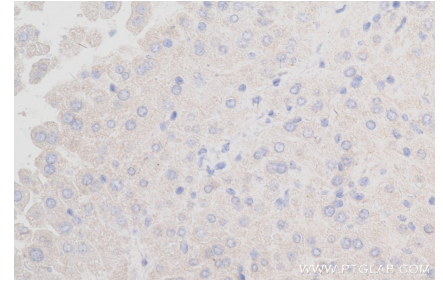
Selected Validation Data



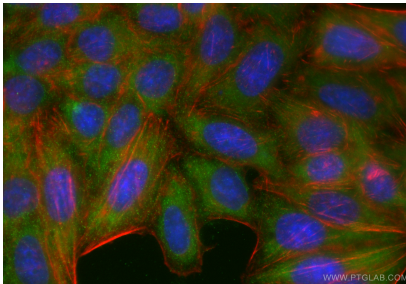
Various lysates were subjected to SDS PAGE followed by western blot with 84101-5-RR (Complement factor B antibody) at dilution of 1:5000 incubated at room temperature for 1.5 hours.



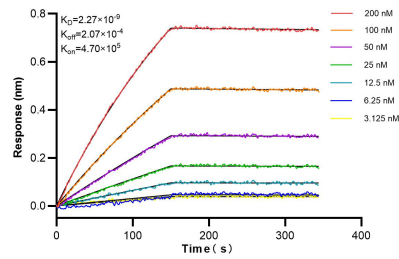
Immunohistochemical analysis of paraffin-embedded mouse liver tissue slide using 84101-5-RR (Complement factor B antibody) at dilution of 1:400 (under 10x lens). Heat mediated antigen retrieval with Tris-EDTA buffer (pH 9.0).



Immunohistochemical analysis of paraffin-embedded mouse liver tissue slide using 84101-5-RR (Complement factor B antibody) at dilution of 1:400 (under 40x lens). Heat mediated antigen retrieval with Tris-EDTA buffer (pH 9.0).



Immunofluorescent analysis of (-20°C Ethanol) fixed HepG2 cells using Complement factor B antibody (84101-5-RR, Clone: 241141A8) at dilution of 1:500 and CoralLite® 488-Conjugated Goat Anti-Rabbit IgG(H+L) (SA00013-2), CL594-phalloidin (red).



Biolayer interferometry (BLI) kinetic assays of 84101-5-RR against Human Complement factor B were performed. The affinity constant is 2.27 nM.