

For Research Use Only

Complement factor B Recombinant antibody, PBS Only (Capture)

Catalog Number: 84101-10-PBS



Basic Information

Catalog Number: 84101-10-PBS	GenBank Accession Number: NM_001710.6	Purification Method: Protein A purification
Size: 100ug, Concentration: 1 mg/ml by Nanodrop;	GeneID (NCBI): 629	CloneNo.: 242709A6
Source: Rabbit	UNIPROT ID: P00751-1	
Isotype: IgG	Full Name: complement factor B	
	Calculated MW: 86kDa	

Applications

Tested Applications:
Sandwich ELISA, Indirect ELISA, Sample test

Species Specificity:
human

Product Information

84101-10-PBS targets Complement factor B as part of a matched antibody pair:

MP01031-4: 84101-10-PBS capture and 84101-8-PBS detection (validated in Sandwich ELISA)

Unconjugated rabbit recombinant monoclonal antibody in PBS only (BSA and azide free) storage buffer at a concentration of 1 mg/mL, ready for conjugation. Created using Proteintech's proprietary in-house recombinant technology. Recombinant production enables unrivalled batch-to-batch consistency, easy scale-up, and future security of supply.

This conjugation ready format makes antibodies ideal for use in many applications including: ELISAs, multiplex assays requiring matched pairs, mass cytometry, and multiplex imaging applications. Antibody use should be optimized by the end user for each application and assay.

Storage

Storage:
Store at -80°C.
Storage Buffer:
PBS Only

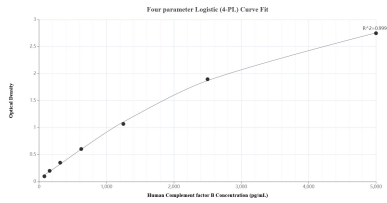
For technical support and original validation data for this product please contact:

T: 1 (888) 4PTGLAB (1-888-478-4522) (toll free in USA), or 1(312) 455-8498 (outside USA)

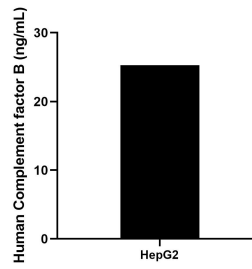
E: proteintech@ptglab.com
W: ptglab.com

This product is exclusively available under Proteintech Group brand and is not available to purchase from any other manufacturer.

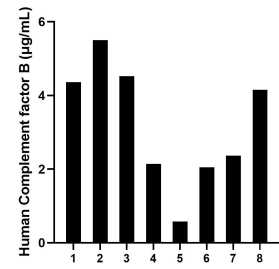
Selected Validation Data



Sandwich ELISA standard curve of MP01031-4, Human Complement factor B Recombinant Matched Antibody Pair - PBS only. 84101-10-PBS was coated to a plate as the capture antibody and incubated with serial dilutions of standard Eg1224. 84101-8-PBS was HRP conjugated as the detection antibody. Range: 78.1-5000 pg/mL



The mean Complement factor B concentration was determined to be 25.3 ng/mL in HepG2 cell extract based on a 1.8 mg/mL extract load.



Serum of eight individual healthy human donors was measured. The Complement factor B concentration of detected samples was determined to be 3.2 µg/mL with a range of 0.6-5.5 µg/mL