

For Research Use Only

MYH2-specific Recombinant antibody

Catalog Number: 84099-1-RR



Basic Information

Catalog Number: 84099-1-RR	GenBank Accession Number: NM_017534	Purification Method: Protein A purification
Size: 100ul , Concentration: 1000 µg/ml by Nanodrop;	GeneID (NCBI): 4620	CloneNo.: 240810F8
Source: Rabbit	UNIPROT ID: Q9UIKX2	Recommended Dilutions: IHC 1:50-1:500 IF/ICC 1:200-1:800
Isotype: IgG	Full Name: myosin, heavy chain 2, skeletal muscle, adult	
	Calculated MW: 223 kDa	

Applications

Tested Applications: IHC, IF/ICC, ELISA	Positive Controls: IHC : mouse heart tissue, IF/ICC : C2C12 cells,
Species Specificity: human, mouse	
Note-IHC: suggested antigen retrieval with TE buffer pH 9.0; (*) Alternatively, antigen retrieval may be performed with citrate buffer pH 6.0	

Storage

Storage:
Store at -20°C. Stable for one year after shipment.
Storage Buffer:
PBS with 0.02% sodium azide and 50% glycerol pH 7.3.
Aliquoting is unnecessary for -20°C storage

*** 20ul sizes contain 0.1% BSA

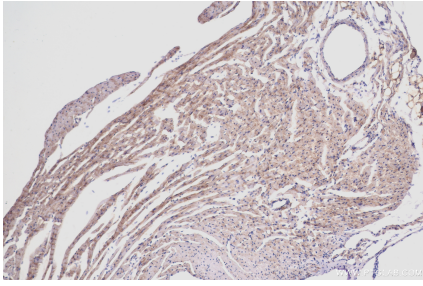
For technical support and original validation data for this product please contact:

T: 1 (888) 4PTGLAB (1-888-478-4522) (toll free in USA), or 1(312) 455-8498 (outside USA)

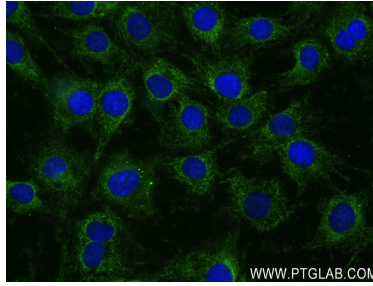
E: proteintech@ptglab.com
W: ptglab.com

This product is exclusively available under Proteintech Group brand and is not available to purchase from any other manufacturer.

Selected Validation Data



Immunohistochemical analysis of paraffin-embedded mouse heart tissue slide using 84099-1-RR (Myosin 2a antibody) at dilution of 1:200 (under 10x lens). Heat mediated antigen retrieval with Tris-EDTA buffer (pH 9.0).



Immunofluorescent analysis of (4% PFA) fixed C2C12 cells using Myosin 2a antibody (84099-1-RR, Clone: 240810F8) at dilution of 1:400 and CoraLite®488-Conjugated AffiniPure Goat Anti-Rabbit IgG(H+L) (SA00013-2).