

For Research Use Only

CD209 Recombinant antibody, PBS Only

Catalog Number: 84095-6-PBS



Basic Information

Catalog Number: 84095-6-PBS	GenBank Accession Number: BC110615	Purification Method: Protein A purification
Size: 100ug , Concentration: 1 mg/ml by Nanodrop;	GeneID (NCBI): 30835	CloneNo.: 240907A2
Source: Rabbit	UNIPROT ID: Q9NNX6	
Isotype: IgG	Full Name: CD209 molecule	
	Calculated MW: 404 aa, 45.7 kDa	
	Observed MW: 48 kDa	

Applications

Tested Applications:
WB, Indirect ELISA

Species Specificity:
human

Background Information

CD209 (DC-SIGN, CLEC4L) is a C-type lectin receptor that is involved in the innate immune system and recognizes numerous evolutionarily divergent pathogens, including bacteria, viruses, and parasites. CD209 is preferentially expressed on dendritic cells (DCs). It mediates transient adhesion of DCs with T cells. It has been reported that CD209 plays a role in capture and transmission of HIV from DC to T cells (PMID: 10721995).

Storage

Storage:
Store at -80°C.

Storage Buffer:
PBS Only

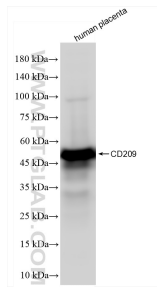
For technical support and original validation data for this product please contact:

T: 1 (888) 4PTGLAB (1-888-478-4522) (toll free in USA), or 1(312) 455-8498 (outside USA)

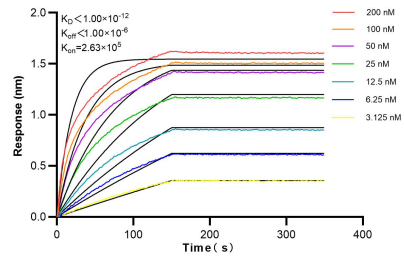
E: proteintech@ptglab.com
W: ptglab.com

This product is exclusively available under Proteintech Group brand and is not available to purchase from any other manufacturer.

Selected Validation Data



human placenta tissue was subjected to SDS PAGE followed by western blot with 84095-6-RR (CD209 antibody) at dilution of 1:5000 incubated at room temperature for 1.5 hours. This data was developed using the same antibody clone with 84095-6-PBS in a different storage buffer formulation.



Biolayer interferometry (BLI) kinetic assays of 84095-6-RR against Human CD209 were performed. The affinity constant is below 1 pM.