

For Research Use Only

IGFBP2 Recombinant antibody

Catalog Number: 84092-3-RR



Basic Information

Catalog Number: 84092-3-RR	GenBank Accession Number: NM_008342.3	Purification Method: Protein A purification
Size: 100ul , Concentration: 1000 µg/ml by Nanodrop;	GeneID (NCBI): 16008	CloneNo.: 241363D8
Source: Rabbit	UNIPROT ID: P47877	Recommended Dilutions: IF/ICC 1:125-1:500
Isotype: IgG	Full Name: insulin-like growth factor binding protein 2	
	Calculated MW: 33kDa	

Applications

Tested Applications: IF/ICC, ELISA	Positive Controls: IF/ICC : HeLa cells,
Species Specificity: mouse	

Background Information

IGFBP2 is a key member of the IGFBP family that is highly expressed in embryonic and fetal tissues and decreases significantly after birth. IGFBP2 mediates IGF-independent tumorigenesis by participating in intracellular and nuclear regulatory networks and may serve as an excellent prognostic biomarker in various cancers (PMID: 35546443).

Storage

Storage:
Store at -20°C. Stable for one year after shipment.
Storage Buffer:
PBS with 0.02% sodium azide and 50% glycerol pH 7.3.
Aliquoting is unnecessary for -20°C storage

*** 20ul sizes contain 0.1% BSA

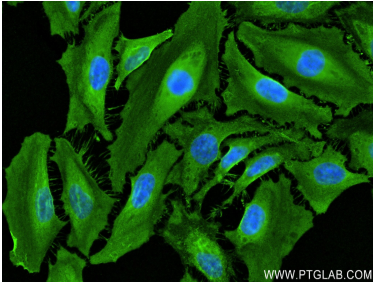
For technical support and original validation data for this product please contact:

T: 1 (888) 4PTGLAB (1-888-478-4522) (toll free
in USA), or 1(312) 455-8498 (outside USA)

E: proteintech@ptglab.com
W: ptglab.com

This product is exclusively available under Proteintech Group brand and is not available to purchase from any other manufacturer.

Selected Validation Data



Immunofluorescent analysis of (4% PFA) fixed HeLa cells using IGFBP2 antibody (84092-3-RR, Clone: 241363D8) at dilution of 1:250 and CoraLite®488-Conjugated AffiniPure Goat Anti-Rabbit IgG(H+L) (SA00013-2).