

For Research Use Only

SP6 Recombinant antibody, PBS Only (Detector)



Catalog Number: 84088-2-PBS

Basic Information

Catalog Number: 84088-2-PBS	GenBank Accession Number: BC103951	Purification Method: Protein A purification
Size: 100ug, Concentration: 1 mg/ml by Nanodrop;	GeneID (NCBI): 80320	CloneNo.: 241169E1
Source: Rabbit	UNIPROT ID: Q3SY56	
Isotype: IgG	Full Name: Sp6 transcription factor	
Immunogen Catalog Number: AG29372	Calculated MW: 376 aa, 40 kDa	

Applications

Tested Applications:
Cytometric bead array, Indirect ELISA

Species Specificity:
human

Product Information

84088-2-PBS targets SP6 as part of a matched antibody pair:

MP01005-2: 84088-4-PBS capture and 84088-2-PBS detection (validated in Cytometric bead array)

MP01005-3: 84088-3-PBS capture and 84088-2-PBS detection (validated in Cytometric bead array)

Unconjugated rabbit recombinant monoclonal antibody in PBS only (BSA and azide free) storage buffer at a concentration of 1 mg/mL, ready for conjugation. Created using Proteintech's proprietary in-house recombinant technology. Recombinant production enables unrivalled batch-to-batch consistency, easy scale-up, and future security of supply.

This conjugation ready format makes antibodies ideal for use in many applications including: ELISAs, multiplex assays requiring matched pairs, mass cytometry, and multiplex imaging applications. Antibody use should be optimized by the end user for each application and assay.

Storage

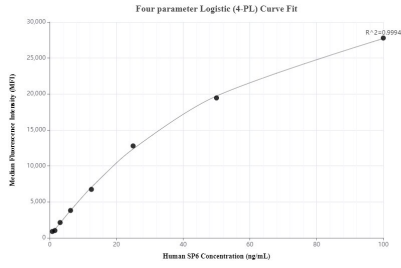
Storage:
Store at -80°C.

Storage Buffer:
PBS Only

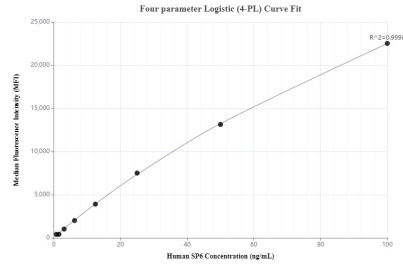
For technical support and original validation data for this product please contact:
T: 1 (888) 4PTGLAB (1-888-478-4522) (toll free in USA), or 1(312) 455-8498 (outside USA) E: proteintech@ptglab.com
W: ptglab.com

This product is exclusively available under Proteintech Group brand and is not available to purchase from any other manufacturer.

Selected Validation Data



Cytometric bead array standard curve of MP01005-2, SP6 Recombinant Matched Antibody Pair, PBS Only. Capture antibody: 84088-4-PBS. Detection antibody: 84088-2-PBS. Standard: Ag29372. Range: 0.781-100 ng/mL



Cytometric bead array standard curve of MP01005-3, SP6 Recombinant Matched Antibody Pair, PBS Only. Capture antibody: 84088-3-PBS. Detection antibody: 84088-2-PBS. Standard: Ag29372. Range: 0.781-100 ng/mL