

For Research Use Only

# NOTCH2 Recombinant antibody

Catalog Number: 84074-4-RR



## Basic Information

<b>Catalog Number:</b> 84074-4-RR	<b>GenBank Accession Number:</b> NM_024408	<b>Purification Method:</b> Protein A purification
<b>Size:</b> 100ul , Concentration: 1000 ug/ml by Nanodrop;	<b>GeneID (NCBI):</b> 4853	<b>CloneNo.:</b> 241162A2
<b>Source:</b> Rabbit	<b>UNIPROT ID:</b> Q04721	<b>Recommended Dilutions:</b> WB 1:5000-1:50000
<b>Isotype:</b> IgG	<b>Full Name:</b> Notch homolog 2 (Drosophila)	
<b>Immunogen Catalog Number:</b> AG29413	<b>Calculated MW:</b> 265 kDa	
	<b>Observed MW:</b> 110 kDa, 265kDa	

## Applications

<b>Tested Applications:</b> WB, ELISA	<b>Positive Controls:</b> WB : U-87 MG cells, HeLa cells, HEK-293 cells, A431 cells, MCF-7 cells
<b>Species Specificity:</b> human	

## Background Information

NOTCH2 (Neurogenic locus notch homolog protein 2) belongs to the NOTCH family. In kidney, previous reports demonstrated that Notch1 and Notch2 were activated in mammalian nephrogenesis (PMID: 24526233). Notch2 is expressed in many cell types of most lineages in the hematolymphoid compartment and has specific roles in differentiation and function of various immune cells. Notch2 is required for development of splenic marginal zone B cells and regulates differentiation of dendritic cells (DCs) in the spleen. Notch2 appears to play some specific roles in the intestinal immunity, given that the fate of mast cells and a subset of DCs is regulated by Notch2 in the intestine. Notch2 also has important roles in helper T cell divergence from naïve CD4 T cells and activation of cytotoxic T cells (PMID: 22695918).

## Storage

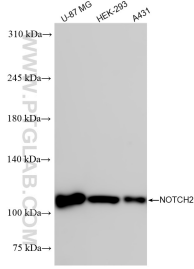
**Storage:**  
Store at -20°C. Stable for one year after shipment.  
**Storage Buffer:**  
PBS with 0.02% sodium azide and 50% glycerol pH 7.3.  
Aliquoting is unnecessary for -20°C storage

\*\*\* 20ul sizes contain 0.1% BSA

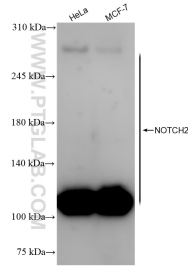
For technical support and original validation data for this product please contact:  
T: 1 (888) 4PTGLAB (1-888-478-4522) (toll free in USA), or 1(312) 455-8498 (outside USA)      E: proteintech@ptglab.com  
W: ptglab.com

This product is exclusively available under Proteintech Group brand and is not available to purchase from any other manufacturer.

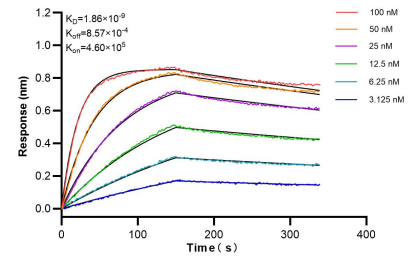
## Selected Validation Data



Various lysates were subjected to SDS PAGE followed by western blot with 84074-4-RR (NOTCH2 antibody) at dilution of 1:10000 incubated at room temperature for 1.5 hours.



Various lysates were subjected to SDS PAGE followed by western blot with 84074-4-RR (NOTCH2 antibody) at dilution of 1:10000 incubated at room temperature for 1.5 hours.



Biolayer interferometry (BLI) kinetic assays of 84074-4-RR against Human NOTCH2 were performed. The affinity constant is 1.86 nM.