

For Research Use Only

NOTCH2 Recombinant antibody, PBS Only

Catalog Number:84074-4-PBS



Basic Information

Catalog Number: 84074-4-PBS	GenBank Accession Number: NM_024408	Purification Method: Protein A purification
Size: 100ug , Concentration: 1 mg/ml by Nanodrop;	GeneID (NCBI): 4853	CloneNo.: 241162A2
Source: Rabbit	UNIPROT ID: Q04721	
Isotype: IgG	Full Name: Notch homolog 2 (Drosophila)	
Immunogen Catalog Number: AG29413	Calculated MW: 265 kDa	
	Observed MW: 110 kDa, 265kDa	

Applications

Tested Applications:
WB, Indirect ELISA

Species Specificity:
human

Background Information

NOTCH2 (Neurogenic locus notch homolog protein 2) belongs to the NOTCH family.. In kidney, previous reports demonstrated that Notch1 and Notch2 were activated in mammalian nephrogenesis (PMID: 24526233). Notch2 is expressed in many cell types of most lineages in the hematolymphoid compartment and has specific roles in differentiation and function of various immune cells. Notch2 is required for development of splenic marginal zone B cells and regulates differentiation of dendritic cells (DCs) in the spleen. Notch2 appears to play some specific roles in the intestinal immunity, given that the fate of mast cells and a subset of DCs is regulated by Notch2 in the intestine. Notch2 also has important roles in helper T cell divergence from naïve CD4 T cells and activation of cytotoxic T cells (PMID: 22695918).

Storage

Storage:
Store at -80°C.

Storage Buffer:
PBS Only

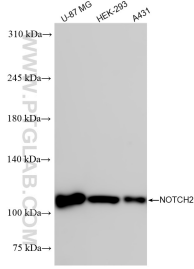
For technical support and original validation data for this product please contact:

T: 1 (888) 4PTGLAB (1-888-478-4522) (toll free in USA), or 1(312) 455-8498 (outside USA)

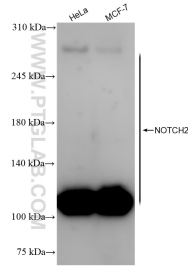
E: proteintech@ptglab.com
W: ptglab.com

This product is exclusively available under Proteintech Group brand and is not available to purchase from any other manufacturer.

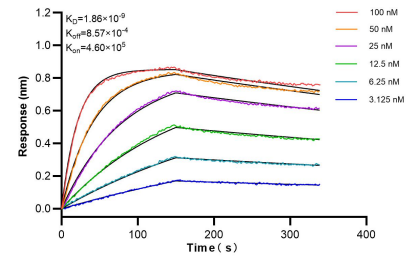
Selected Validation Data



Various lysates were subjected to SDS PAGE followed by western blot with 84074-4-RR (NOTCH2 antibody) at dilution of 1:10000 incubated at room temperature for 1.5 hours. This data was developed using the same antibody clone with 84074-4-PBS in a different storage buffer formulation.



Various lysates were subjected to SDS PAGE followed by western blot with 84074-4-RR (NOTCH2 antibody) at dilution of 1:10000 incubated at room temperature for 1.5 hours. This data was developed using the same antibody clone with 84074-4-PBS in a different storage buffer formulation.



Biacore BLI kinetic assays of 84074-4-RR against Human NOTCH2 were performed. The affinity constant is 1.86 nM.