

For Research Use Only

NOTCH2 Recombinant antibody, PBS Only (Detector)

Catalog Number:84074-1-PBS



Basic Information

Catalog Number: 84074-1-PBS	GenBank Accession Number: NM_024408	Purification Method: Protein A purification
Size: 100ug, Concentration: 1 mg/ml by Nanodrop;	GeneID (NCBI): 4853	CloneNo.: 241162C7
Source: Rabbit	UNIPROT ID: Q04721	
Isotype: IgG	Full Name: Notch homolog 2 (Drosophila)	
Immunogen Catalog Number: AG29413	Calculated MW: 265 kDa	

Applications

Tested Applications:
Cytometric bead array, Sandwich ELISA, Indirect ELISA, Sample test

Species Specificity:
human

Product Information

84074-1-PBS targets NOTCH2 as part of a matched antibody pair:

MP01016-2: 84074-3-PBS capture and 84074-1-PBS detection (validated in Cytometric bead array, Sandwich ELISA)

Unconjugated rabbit recombinant monoclonal antibody in PBS only (BSA and azide free) storage buffer at a concentration of 1 mg/mL, ready for conjugation. Created using Proteintech's proprietary in-house recombinant technology. Recombinant production enables unrivalled batch-to-batch consistency, easy scale-up, and future security of supply.

This conjugation ready format makes antibodies ideal for use in many applications including: ELISAs, multiplex assays requiring matched pairs, mass cytometry, and multiplex imaging applications. Antibody use should be optimized by the end user for each application and assay.

Storage

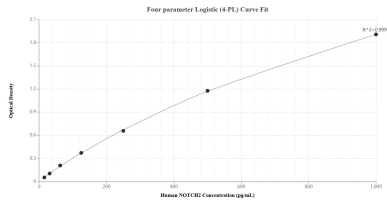
Storage:
Store at -80°C.

Storage Buffer:
PBS Only

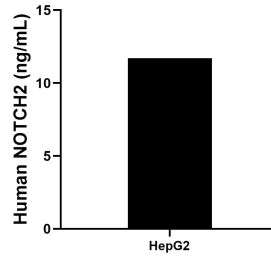
For technical support and original validation data for this product please contact:
T: 1 (888) 4PTGLAB (1-888-478-4522) (toll free in USA), or 1(312) 455-8498 (outside USA) E: proteintech@ptglab.com
W: ptglab.com

This product is exclusively available under Proteintech Group brand and is not available to purchase from any other manufacturer.

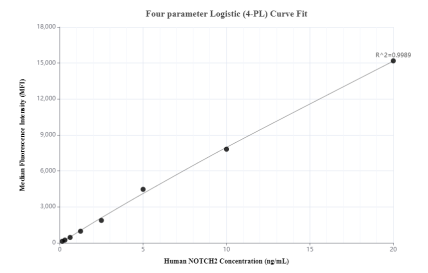
Selected Validation Data



Sandwich ELISA standard curve of MP01016-2, Human NOTCH2 Recombinant Matched Antibody Pair - PBS only. 84074-3-PBS was coated to a plate as the capture antibody and incubated with serial dilutions of standard Ag29413. 84074-1-PBS was HRP conjugated as the detection antibody. Range: 15.6-1000 pg/mL.



The mean NOTCH2 concentration was determined to be 11.7 ng/mL in HepG2 cell extract based on a 1.0 mg/mL extract load.



Cytometric bead array standard curve of MP01016-2, NOTCH2 Recombinant Matched Antibody Pair, PBS Only. Capture antibody: 84074-3-PBS. Detection antibody: 84074-1-PBS. Standard: Ag29413. Range: 0.156-20 ng/mL.