

For Research Use Only

# CD38 Recombinant antibody

Catalog Number: 84070-2-RR



## Basic Information

<b>Catalog Number:</b> 84070-2-RR	<b>GenBank Accession Number:</b> BC007964	<b>Purification Method:</b> Protein A purification
<b>Size:</b> 100ul , Concentration: 1000 µg/ml by Nanodrop;	<b>GeneID (NCBI):</b> 952	<b>CloneNo.:</b> 241246B1
<b>Source:</b> Rabbit	<b>ENSEMBL Gene ID:</b> ENSG00000004468	<b>Recommended Dilutions:</b> WB 1:5000-1:50000 IF/ICC 1:125-1:500
<b>Isotype:</b> IgG	<b>UNIPROT ID:</b> P28907	
	<b>Full Name:</b> CD38 molecule	
	<b>Calculated MW:</b> 300 aa, 34 kDa	
	<b>Observed MW:</b> 42 kDa	

## Applications

<b>Tested Applications:</b> WB, IF/ICC, ELISA	<b>Positive Controls:</b>
<b>Species Specificity:</b> human	<b>WB :</b> Raji cells, A549 cells, MOLT-4 cells, Ramos cells <b>IF/ICC :</b> Raji cells,

## Background Information

CD38, also known as ADP-ribosyl cyclase 1, is a type II transmembrane glycoprotein with a short N-terminal cytoplasmic tail, a single membrane-spanning domain, and a C-terminal extracellular region with four N-glycosylation sites (PMID: 2319135). The extracellular domain of CD38 has bifunctional enzyme activities that catalyze synthesis of cyclic ADP ribose from nicotinamide adenine dinucleotide (NAD) and hydrolysis of cyclic ADP ribose to adenosine diphosphoribose (PMID: 10636863). CD38 is expressed on a variety of hematopoietic and non-hematopoietic cells and is involved in diverse processes such as generation of calcium-mobilizing metabolites, cell activation, and chemotaxis (PMID: 25938500).

## Storage

**Storage:**  
Store at -20°C. Stable for one year after shipment.  
**Storage Buffer:**  
PBS with 0.02% sodium azide and 50% glycerol pH 7.3.  
**Aliquoting is unnecessary for -20°C storage**

\*\*\* 20ul sizes contain 0.1% BSA

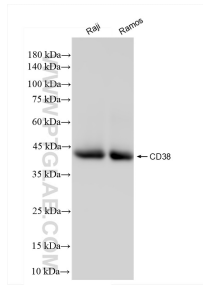
For technical support and original validation data for this product please contact:

T: 1 (888) 4PTGLAB (1-888-478-4522) (toll free  
in USA), or 1(312) 455-8498 (outside USA)

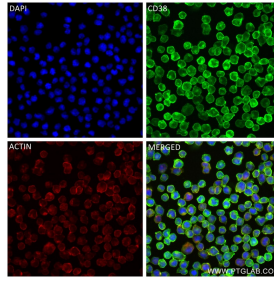
E: [proteintech@ptglab.com](mailto:proteintech@ptglab.com)  
W: [ptglab.com](http://ptglab.com)

This product is exclusively available under Proteintech Group brand and is not available to purchase from any other manufacturer.

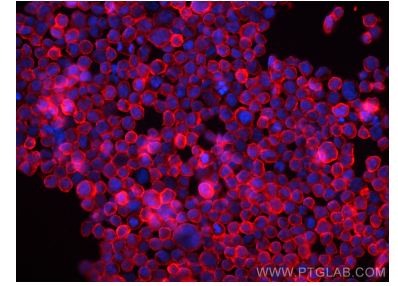
## Selected Validation Data



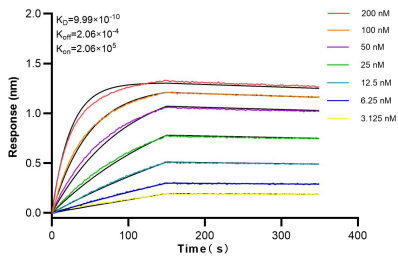
Various lysates were subjected to SDS PAGE followed by western blot with 84070-2-RR (CD38 antibody) at dilution of 1:10000 incubated at room temperature for 1.5 hours.



Immunofluorescent analysis of (4% PFA) fixed Raji cells using CD38 antibody (84070-2-RR, Clone: 241246B1) at dilution of 1:250 and CoraLite® 488-Conjugated Goat Anti-Rabbit IgG(H+L) (SA00013-2), CL594-Phalloidin (red).



Immunofluorescent analysis of (4% PFA) fixed Raji cells using CD38 antibody (84070-2-RR, Clone: 241246B1) at dilution of 1:500 and CoraLite® 594-Conjugated Goat Anti-Rabbit IgG(H+L) (SA00013-4), CL594-Phalloidin (red).



Bi-layer interferometry (BLI) kinetic assays of 84070-2-RR against Human CD38 were performed. The affinity constant is 0.999 nM.