

For Research Use Only

CD38 Recombinant antibody, PBS Only (Capture)

Catalog Number: 84070-1-PBS



Basic Information

Catalog Number: 84070-1-PBS	GenBank Accession Number: BC007964	Purification Method: Protein A purification
Size: 100ug , Concentration: 1 mg/ml by Nanodrop;	GeneID (NCBI): 952	CloneNo.: 241246A12
Source: Rabbit	ENSEMBL Gene ID: ENSG00000004468	
Isotype: IgG	UNIPROT ID: P28907	
	Full Name: CD38 molecule	
	Calculated MW: 300 aa, 34 kDa	

Applications

Tested Applications:
IF/ICC, Cytometric bead array, Sandwich ELISA,
Indirect ELISA, Sample test

Species Specificity:
human

Product Information

84070-1-PBS targets CD38 as part of a matched antibody pair:

MP00991-2: 84070-1-PBS capture and 84070-2-PBS detection (validated in Cytometric bead array, Sandwich ELISA)

Unconjugated rabbit recombinant monoclonal antibody in PBS only (BSA and azide free) storage buffer at a concentration of 1 mg/mL, ready for conjugation. Created using Proteintech's proprietary in-house recombinant technology. Recombinant production enables unrivalled batch-to-batch consistency, easy scale-up, and future security of supply.

This conjugation ready format makes antibodies ideal for use in many applications including: ELISAs, multiplex assays requiring matched pairs, mass cytometry, and multiplex imaging applications. Antibody use should be optimized by the end user for each application and assay.

Storage

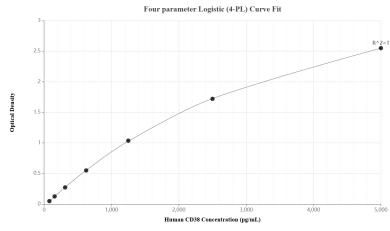
Storage:
Store at -80°C.

Storage Buffer:
PBS Only

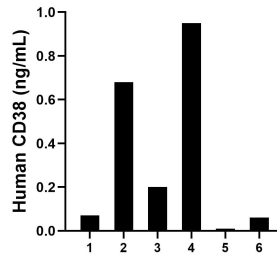
For technical support and original validation data for this product please contact:
T: 1 (888) 4PTGLAB (1-888-478-4522) (toll free in USA), or 1(312) 455-8498 (outside USA) E: proteintech@ptglab.com
W: ptglab.com

This product is exclusively available under Proteintech Group brand and is not available to purchase from any other manufacturer.

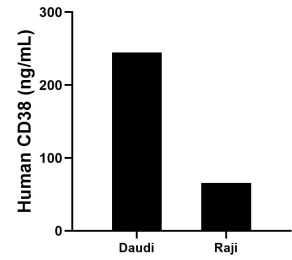
Selected Validation Data



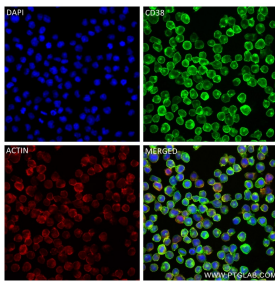
Sandwich ELISA standard curve of MP00991-2, Human CD38 Recombinant Matched Antibody Pair - PBS only. 84070-1-PBS was coated to a plate as the capture antibody and incubated with serial dilutions of standard Eg0110. 84070-2-PBS was HRP conjugated as the detection antibody. Range: 78.1-5000 pg/mL.



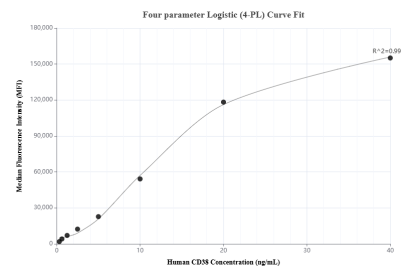
Serum of six individual healthy human donors was measured. The CD38 concentration of detected samples was determined to be 0.3 ng/mL with a range of ND-1.0 ng/mL.



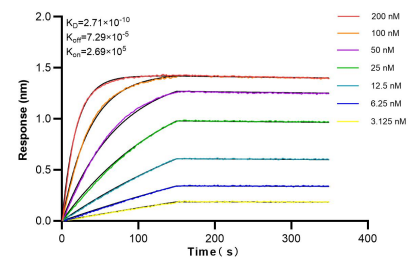
The mean CD38 concentration was determined to be 244.5 ng/mL in Daudi cell extract based on a 1.8 mg/mL extract load and 65.6 ng/mL in Raji cell extract based on a 1.2 mg/mL extract load.



Immunofluorescent analysis of (4% PFA) fixed Raji cells using CD38 antibody (84070-1-RR, Clone: 241246A 12) at dilution of 1:250 and CoraLite®488-Conjugated Goat Anti-Rabbit IgG(H+L) (SA00013-2), CL594-Phalloidin (red). This data was developed using the same antibody clone with 84070-1-PBS in a different storage buffer formulation.



Cytometric bead array standard curve of MP00991-2, CD38 Recombinant Matched Antibody Pair, PBS Only. Capture antibody: 84070-1-PBS. Detection antibody: 84070-2-PBS. Standard: Eg0110. Range: 0.313-40 ng/mL.



Bi-layer interferometry (BLI) kinetic assays of 84070-1-RR against Human CD38 were performed. The affinity constant is 0.271 nM.