

For Research Use Only

# Clusterin Recombinant antibody, PBS Only

Catalog Number: 84067-4-PBS



## Basic Information

<b>Catalog Number:</b> 84067-4-PBS	<b>GenBank Accession Number:</b> BC010514	<b>Purification Method:</b> Protein A purification
<b>Size:</b> 100ug, Concentration: 2 mg/ml by Nanodrop;	<b>GeneID (NCBI):</b> 1191	<b>CloneNo.:</b> 241277D4
<b>Source:</b> Rabbit	<b>UNIPROT ID:</b> P10909	
<b>Isotype:</b> IgG	<b>Full Name:</b> clusterin	
	<b>Calculated MW:</b> 449 aa, 53 kDa	
	<b>Observed MW:</b> 37 kDa	

## Applications

**Tested Applications:**  
WB, IF/ICC, Indirect ELISA

**Species Specificity:**  
human

## Background Information

Clusterin (Apolipoprotein J) is a 75-80 kDa heterodimeric glycoprotein produced by a wide array of tissues and found in most biologic fluids (PMID: 7648419; 11906815). It is encoded by one single gene and cleaved posttranslationally into  $\alpha$  (34-36 kDa) and  $\beta$  (36-39 kDa) subunits prior to secretion from the cell. Many functions have been described for clusterin, including regulating apoptosis, transporting lipids, controlling cell interactions, regulating complement (PMID: 10694874).

## Storage

**Storage:**  
Store at -80°C.

**Storage Buffer:**  
PBS Only

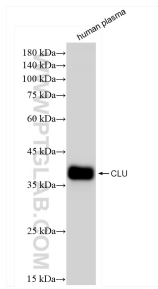
For technical support and original validation data for this product please contact:

T: 1 (888) 4PTGLAB (1-888-478-4522) (toll free in USA), or 1(312) 455-8498 (outside USA)

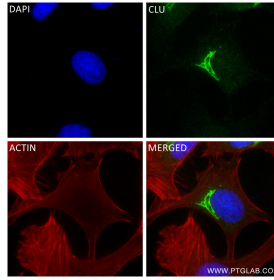
E: [proteintech@ptglab.com](mailto:proteintech@ptglab.com)  
W: [ptglab.com](http://ptglab.com)

**This product is exclusively available under Proteintech Group brand and is not available to purchase from any other manufacturer.**

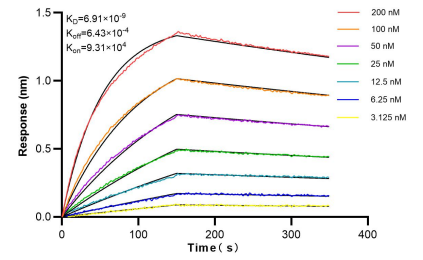
## Selected Validation Data



human plasma were subjected to SDS PAGE followed by western blot with 84067-4-RR (Clusterin antibody) at dilution of 1:10000 incubated at room temperature for 1.5 hours. This data was developed using the same antibody clone with 84067-4-PBS in a different storage buffer formulation.



Immunofluorescent analysis of (4% PFA) fixed HeLa cells using Clusterin antibody (84067-4-RR, Clone: 241277D4 ) at dilution of 1:500 and CoraLite®488-Conjugated Goat Anti-Rabbit IgG(H+L) (SA00013-2), CL594-Phalloidin (red). This data was developed using the same antibody clone with 84067-4-PBS in a different storage buffer formulation.



Bi-layer interferometry (BLI) kinetic assays of 84067-4-RR against Human Clusterin were performed. The affinity constant is 6.91 nM.