

For Research Use Only

Clusterin Recombinant antibody, PBS Only (Capture)

Catalog Number: 84067-1-PBS



Basic Information

Catalog Number: 84067-1-PBS	GenBank Accession Number: BC010514	Purification Method: Protein A purification
Size: 100ug, Concentration: 1 mg/ml by Nanodrop;	GeneID (NCBI): 1191	CloneNo.: 241277A4
Source: Rabbit	UNIPROT ID: P10909	
Isotype: IgG	Full Name: clusterin	
	Calculated MW: 449 aa, 53 kDa	

Applications

Tested Applications:
Cytometric bead array, Sandwich ELISA, Indirect ELISA, Sample test

Species Specificity:
human

Product Information

84067-1-PBS targets Clusterin as part of a matched antibody pair:

MP00986-2: 84067-1-PBS capture and 84067-2-PBS detection (validated in Cytometric bead array)

MP00986-3: 84067-1-PBS capture and 84067-3-PBS detection (validated in Sandwich ELISA)

Unconjugated rabbit recombinant monoclonal antibody in PBS only (BSA and azide free) storage buffer at a concentration of 1 mg/mL, ready for conjugation. Created using Proteintech's proprietary in-house recombinant technology. Recombinant production enables unrivalled batch-to-batch consistency, easy scale-up, and future security of supply.

This conjugation ready format makes antibodies ideal for use in many applications including: ELISAs, multiplex assays requiring matched pairs, mass cytometry, and multiplex imaging applications. Antibody use should be optimized by the end user for each application and assay.

Storage

Storage:
Store at -80°C.
Storage Buffer:
PBS Only

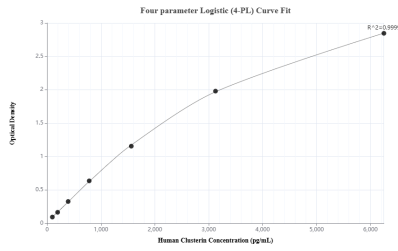
For technical support and original validation data for this product please contact:

T: 1 (888) 4PTGLAB (1-888-478-4522) (toll free in USA), or 1(312) 455-8498 (outside USA)

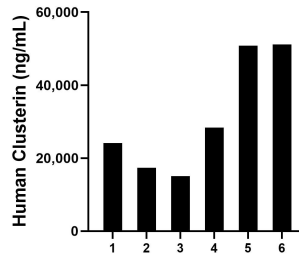
E: proteintech@ptglab.com
W: ptglab.com

This product is exclusively available under Proteintech Group brand and is not available to purchase from any other manufacturer.

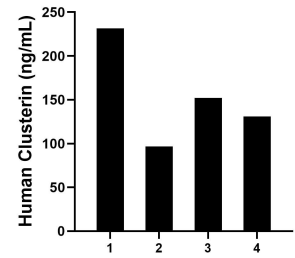
Selected Validation Data



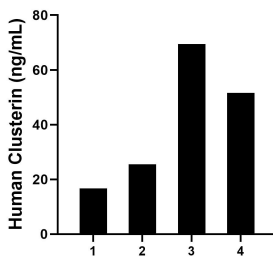
Sandwich ELISA standard curve of MP00986-3, Human Clusterin Recombinant Matched Antibody Pair - PBS only. 84067-1-PBS was coated to a plate as the capture antibody and incubated with serial dilutions of standard Eg0225. 84067-3-PBS was HRP conjugated as the detection antibody. Range: 97.7-6250 pg/mL



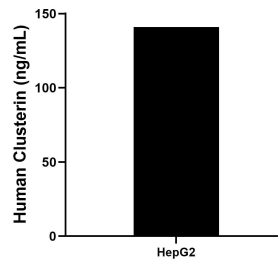
Serum of six individual healthy human donors was measured. The human Clusterin concentration of detected samples was determined to be 31,152.14 ng/mL with a range of 15,052.59 - 51,157.85 ng/mL



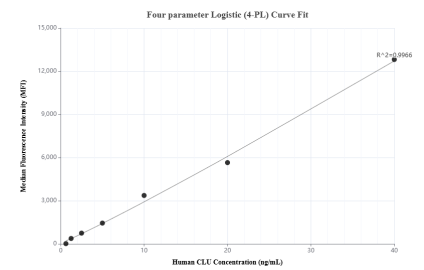
Saliva of four individual healthy human donors was measured. The human Clusterin concentration of detected samples was determined to be 152.81 ng/mL with a range of 95.56 - 231.47 ng/mL



Urine of four individual healthy human donors was measured. The human Clusterin concentration of detected samples was determined to be 40.81 ng/mL with a range of 16.72 - 69.41 ng/mL



HepG2 were cultured in DMEM supplemented with 10% fetal bovine serum, 2.5 mM L-glutamine, 100 U/mL penicillin, and 100 µg/mL streptomycin sulfate. An aliquot of the cell culture supernate was removed, assayed for human Clusterin, and measured 140.90 ng/mL



Cytometric bead array standard curve of MP00986-2, Clusterin Recombinant Matched Antibody Pair, PBS Only. Capture antibody: 84067-1-PBS. Detection antibody: 84067-2-PBS. Standard: Eg0225. Range: 0.625-40 ng/mL