

For Research Use Only

IDO1 Recombinant antibody, PBS Only (Detector)

Catalog Number: 84063-3-PBS



Basic Information

Catalog Number: 84063-3-PBS	GenBank Accession Number: BC027882	Purification Method: Protein A purification
Size: 100ug, Concentration: 1 mg/ml by Nanodrop;	GeneID (NCBI): 3620	CloneNo.: 241110F2
Source: Rabbit	UNIPROT ID: P14902	
Isotype: IgG	Full Name: indoleamine 2,3-dioxygenase 1	
Immunogen Catalog Number: AG3953	Calculated MW: 403 aa, 45 kDa	
	Observed MW: 42 kDa	

Applications

Tested Applications:
WB, IHC, Cytometric bead array, Indirect ELISA

Species Specificity:
human, mouse, rat

Product Information

84063-3-PBS targets IDO1 as part of a matched antibody pair:

MP00982-2: 84063-1-PBS capture and 84063-3-PBS detection (validated in Cytometric bead array)

Unconjugated rabbit recombinant monoclonal antibody in PBS only (BSA and azide free) storage buffer at a concentration of 1 mg/mL, ready for conjugation. Created using Proteintech's proprietary in-house recombinant technology. Recombinant production enables unrivalled batch-to-batch consistency, easy scale-up, and future security of supply.

This conjugation ready format makes antibodies ideal for use in many applications including: ELISAs, multiplex assays requiring matched pairs, mass cytometry, and multiplex imaging applications. Antibody use should be optimized by the end user for each application and assay.

Background Information

IDO1 is the target for therapy in a range of clinical settings, including cancer, chronic infections, autoimmune and allergic syndromes, and transplantation. Elevated IDO1 expression is a hallmark of major viral infections including HIV, HBV, HCV or influenza and also of major bacteria infections, such as Tb, CAP, listeriosis and sepsis. Pathogens are able to hijack the immunosuppressive effects of IDO1 and make use of them to facilitate their own life cycle. MW of IDO1 is 40-42kd (PMID: 14502282; 17055065).

Storage

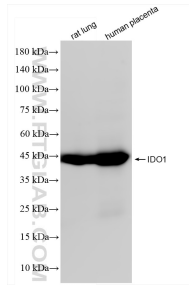
Storage:
Store at -80°C.

Storage Buffer:
PBS Only

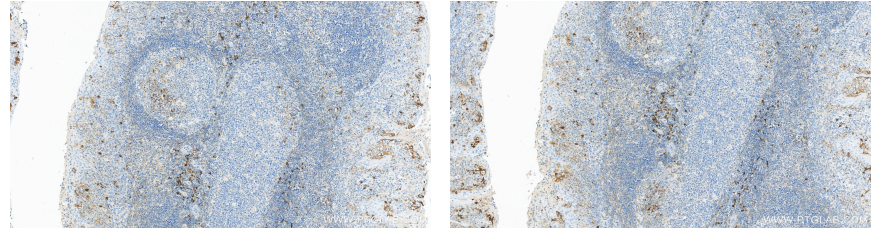
For technical support and original validation data for this product please contact:
T: 1 (888) 4PTGLAB (1-888-478-4522) (toll free in USA), or 1(312) 455-8498 (outside USA)
E: proteintech@ptglab.com
W: ptglab.com

This product is exclusively available under Proteintech Group brand and is not available to purchase from any other manufacturer.

Selected Validation Data

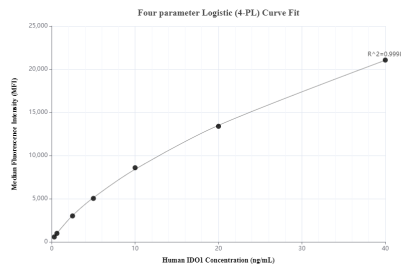


Various lysates were subjected to SDS PAGE followed by western blot with 84063-3-RR (IDO 1 antibody) at dilution of 1:10000 incubated at room temperature for 1.5 hours. This data was developed using the same antibody clone with 84063-3-PBS in a different storage buffer formulation.

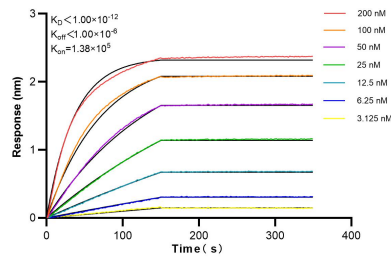


Immunohistochemical analysis of paraffin-embedded human tonsillitis tissue slide using 84063-3-RR (IDO 1 antibody) at dilution of 1:4000 (under 10x lens). Heat mediated antigen retrieval with Tris-EDTA buffer (pH 9.0). This data was developed using the same antibody clone with 84063-3-PBS in a different storage buffer formulation.

Immunohistochemical analysis of paraffin-embedded human tonsillitis tissue slide using 84063-3-RR (IDO 1 antibody) at dilution of 1:4000 (under 10x lens). Heat mediated antigen retrieval with Tris-EDTA buffer (pH 9.0). This data was developed using the same antibody clone with 84063-3-PBS in a different storage buffer formulation.



Cytometric bead array standard curve of MP00982-2, IDO1 Recombinant Matched Antibody Pair, PBS Only. Capture antibody: 84063-1-PBS. Detection antibody: 84063-3-PBS. Standard: Ag3953. Range: 0.313-40 ng/mL



Biolayer interferometry (BLI) kinetic assays of 84063-3-RR against Human IDO 1 were performed. The affinity constant is below 1 pM.