

For Research Use Only

# IDO1 Recombinant antibody, PBS Only (Capture)

Catalog Number: 84063-1-PBS



## Basic Information

<b>Catalog Number:</b> 84063-1-PBS	<b>GenBank Accession Number:</b> BC027882	<b>Purification Method:</b> Protein A purification
<b>Size:</b> 100ug, Concentration: 1 mg/ml by Nanodrop;	<b>GeneID (NCBI):</b> 3620	<b>CloneNo.:</b> 241110C8
<b>Source:</b> Rabbit	<b>UNIPROT ID:</b> P14902	
<b>Isotype:</b> IgG	<b>Full Name:</b> indoleamine 2,3-dioxygenase 1	
<b>Immunogen Catalog Number:</b> AG3953	<b>Calculated MW:</b> 403 aa, 45 kDa	
	<b>Observed MW:</b> 45 kDa	

## Applications

**Tested Applications:**  
WB, FC (Intra), Cytometric bead array, Sandwich ELISA, Indirect ELISA, Sample test

**Species Specificity:**  
human

## Product Information

84063-1-PBS targets IDO1 as part of a matched antibody pair:

MP00982-2: 84063-1-PBS capture and 84063-3-PBS detection (validated in Cytometric bead array)

MP00982-3: 84063-1-PBS capture and 84063-4-PBS detection (validated in Cytometric bead array, Sandwich ELISA)

Unconjugated rabbit recombinant monoclonal antibody in PBS only (BSA and azide free) storage buffer at a concentration of 1 mg/mL, ready for conjugation. Created using Proteintech's proprietary in-house recombinant technology. Recombinant production enables unrivalled batch-to-batch consistency, easy scale-up, and future security of supply.

This conjugation ready format makes antibodies ideal for use in many applications including: ELISAs, multiplex assays requiring matched pairs, mass cytometry, and multiplex imaging applications. Antibody use should be optimized by the end user for each application and assay.

## Background Information

IDO1 is the target for therapy in a range of clinical settings, including cancer, chronic infections, autoimmune and allergic syndromes, and transplantation. Elevated IDO1 expression is a hallmark of major viral infections including HIV, HBV, HCV or influenza and also of major bacteria infections, such as Tb, CAP, listeriosis and sepsis. Pathogens are able to hijack the immunosuppressive effects of IDO1 and make use of them to facilitate their own life cycle. MW of IDO1 is 40-42kd (PMID: 14502282; 17055065).

## Storage

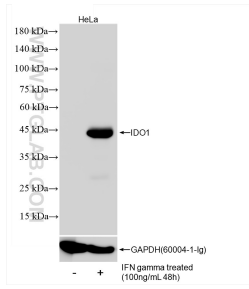
**Storage:**  
Store at -80°C.

**Storage Buffer:**  
PBS Only

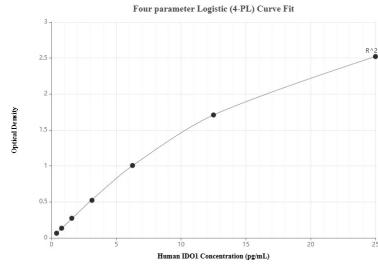
For technical support and original validation data for this product please contact:  
T: 1 (888) 4PTGLAB (1-888-478-4522) (toll free in USA), or 1(312) 455-8498 (outside USA)  
E: [proteintech@ptglab.com](mailto:proteintech@ptglab.com)  
W: [ptglab.com](http://ptglab.com)

**This product is exclusively available under Proteintech Group brand and is not available to purchase from any other manufacturer.**

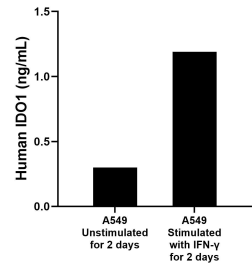
## Selected Validation Data



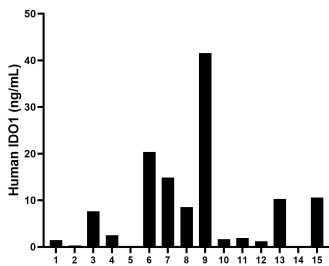
IFN gamma treated HeLa cells were subjected to SDS PAGE followed by western blot with 84063-1-RR (IDO1 antibody) at dilution of 1:4000 incubated at room temperature for 1.5 hours. This data was developed using the same antibody clone with 84063-1-PBS in a different storage buffer formulation.



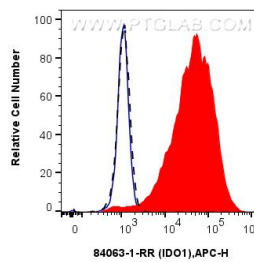
Sandwich ELISA standard curve of MP00982-3, Human IDO1 Recombinant Matched Antibody Pair - PBS only. 84063-1-PBS was coated to a plate as the capture antibody and incubated with serial dilutions of standard Ag3953. 84063-4-PBS was HRP conjugated as the detection antibody. Range: 0.391-25 ng/mL



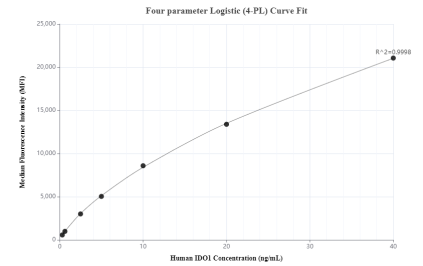
A549 cells were cultured unstimulated or stimulated with 300 µg/mL IFN-gamma for 5 days. The mean IDO1 concentration was determined to be 0.30 ng/mL in unstimulated A549 supernatant, 1.19 ng/mL in IFN-gamma stimulated A549 supernatant.



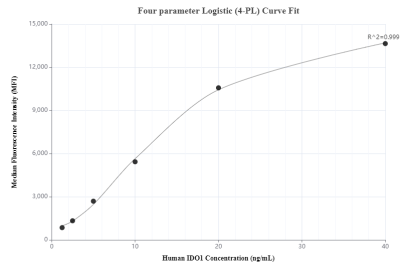
Serum of fifteen individual healthy human donors was measured. The human IDO1 concentration of detected samples was determined to be 8.21 ng/mL with a range of ND - 41.58 ng/mL (ND = Non-detectable)



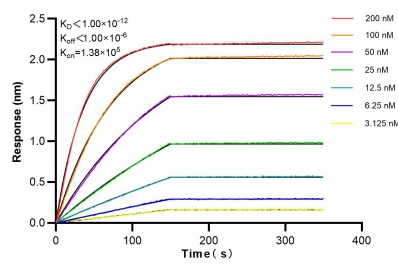
$1 \times 10^6$  IFN-gamma treated HeLa cells were intracellularly stained with 0.25 µg IDO1 Recombinant Antibody (84063-1-RR, Clone:241110C8) and APC-Conjugated Goat Anti-Rabbit IgG(H+L)(red), or 0.25 µg Isotype Control (blue). Cells were fixed with 4% PFA and permeabilized with Flow Cytometry Perm Buffer (PF00011-C). This data was developed using the same antibody clone with 84063-1-PBS in a different storage buffer formulation.



Cytometric bead array standard curve of MP00982-2, IDO1 Recombinant Matched Antibody Pair, PBS Only. Capture antibody: 84063-1-PBS. Detection antibody: 84063-3-PBS. Standard: Ag3953. Range: 0.313-40 ng/mL.



Cytometric bead array standard curve of MP00982-3, IDO1 Recombinant Matched Antibody Pair, PBS Only. Capture antibody: 84063-1-PBS. Detection antibody: 84063-4-PBS. Standard: Ag3953. Range: 1.25-40 ng/mL.



Biolayer interferometry (BLI) kinetic assays of 84063-1-RR against Human IDO1 were performed. The affinity constant is below 1 pM.