

For Research Use Only

# SLC9A3R2 Recombinant antibody

Catalog Number: 84060-5-RR



## Basic Information

Catalog Number:

84060-5-RR

Size:

100ul, Concentration: 1000 µg/ml by  
Nanodrop;

Source:

Rabbit

Isotype:

IgG

Immunogen Catalog Number:

AG13476

GenBank Accession Number:

BC106001

GeneID (NCBI):

9351

UNIPROT ID:

Q15599

Full Name:

solute carrier family 9  
(sodium/hydrogen exchanger),  
member 3 regulator 2

Calculated MW:

337 aa, 37 kDa

Observed MW:

~45 kDa

Purification Method:

Protein A purification

CloneNo.:

241215A3

Recommended Dilutions:

WB 1:2000-1:10000

## Applications

Tested Applications:

WB, ELISA

Species Specificity:

human

Positive Controls:

WB: T-47D cells, MCF-7 cells, HeLa cells, HEK-293T  
cells, U-251 cells

## Background Information

SLC9A3R2, also named as NHERF2, is a member of the Na<sup>+</sup>/H<sup>+</sup> exchanger regulatory factor (NHERF) family of PDZ scaffolding proteins. SLC9A3R2 is needed for cGMP and carbachol-mediated inhibition as well as LPA and dexamethasone-mediated stimulation of NHE3. NHERF1 and NHERF2 are highly homologous structurally to each other but play different roles in the regulation of Na<sup>+</sup> and Cl<sup>-</sup> transport. (PMID: 23612977)

## Storage

Storage:

Store at -20°C. Stable for one year after shipment.

Storage Buffer:

PBS with 0.02% sodium azide and 50% glycerol pH 7.3.

Aliquoting is unnecessary for -20°C storage

\*\*\* 20ul sizes contain 0.1% BSA

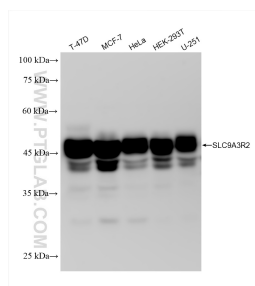
For technical support and original validation data for this product please contact:

T: 1 (888) 4PTGLAB (1-888-478-4522) (toll free  
in USA), or 1(312) 455-8498 (outside USA)

E: proteintech@ptglab.com  
W: ptglab.com

This product is exclusively available under Proteintech  
Group brand and is not available to purchase from any  
other manufacturer.

## Selected Validation Data



Various lysates were subjected to SDS PAGE followed by western blot with 84060-5-RR (SLC9A3R2 antibody) at dilution of 1:5000 incubated at room temperature for 1.5 hours.