

For Research Use Only

KLK3/PSA Recombinant antibody

Catalog Number: 84059-5-RR



Basic Information

Catalog Number: 84059-5-RR	GenBank Accession Number: NM_001648.2	Purification Method: Protein A purification
Size: 100ul , Concentration: 1000 µg/ml by Nanodrop;	GeneID (NCBI): 354	CloneNo.: 241263F8
Source: Rabbit	UNIPROT ID: P07288-1	Recommended Dilutions: WB 1:5000-1:50000 IF/ICC 1:125-1:500
Isotype: IgG	Full Name: kallikrein-related peptidase 3	
	Calculated MW: 29 kDa	
	Observed MW: 30-34 kDa	

Applications

Tested Applications: WB, IF/ICC, FC (Intra), ELISA	Positive Controls: WB : LNCaP cells, IF/ICC : LNCaP cells,
Species Specificity: human	

Background Information

Kallikreins are a subgroup of serine proteases having diverse physiological functions. Growing evidence suggests that many kallikreins are implicated in carcinogenesis and some have potential as novel cancer and other disease biomarkers. kallikrein-related peptidase 3, which is also called PSA (prostate-specific antigen) in the clinical setting, is useful in the diagnosis and monitoring of prostatic carcinoma. KLK3 has 5 isoforms produced by alternative splicing.

Storage

Storage:
Store at -20°C. Stable for one year after shipment.
Storage Buffer:
PBS with 0.02% sodium azide and 50% glycerol pH 7.3.
Aliquoting is unnecessary for -20°C storage

*** 20ul sizes contain 0.1% BSA

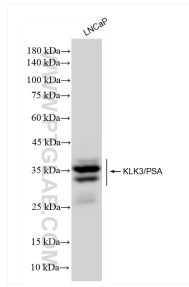
For technical support and original validation data for this product please contact:

T: 1 (888) 4PTGLAB (1-888-478-4522) (toll free in USA), or 1(312) 455-8498 (outside USA)

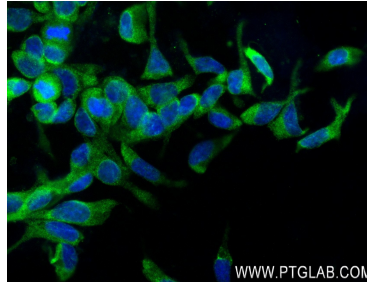
E: proteintech@ptglab.com
W: ptglab.com

This product is exclusively available under Proteintech Group brand and is not available to purchase from any other manufacturer.

Selected Validation Data

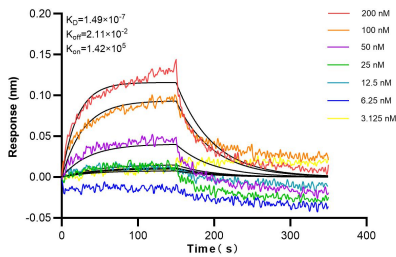


LNCaP cells were subjected to SDS PAGE followed by western blot with 84059-5-RR (KLK3/PSA antibody) at dilution of 1:10000 incubated at room temperature for 1.5 hours.



Immunofluorescent analysis of (4% PFA) fixed LNCaP cells using KLK3/PSA antibody (84059-5-RR, Clone: 241263F8) at dilution of 1:250 and CoraLite®488-Conjugated Goat Anti-Rabbit IgG(H+L) (SA00013-2).

1x10⁶ HeLa cells were intracellularly stained with 0.25 ug KLK3/PSA Recombinant antibody (84059-5-RR, Clone:241263F8) and PE-conjugated Goat Anti-Rabbit IgG(red), or 0.25 ug Isotype Control (blue). Cells were fixed and permeabilized with True-Nuclear Transcription Factor Buffer Set.



Biolayer interferometry (BLI) kinetic assays of 84059-5-RR against Human KLK3/PSA were performed. The affinity constant is 149 nM.