

For Research Use Only

# KLK3/PSA Recombinant antibody, PBS Only

Catalog Number: 84059-5-PBS



## Basic Information

<b>Catalog Number:</b> 84059-5-PBS	<b>GenBank Accession Number:</b> NM_001648.2	<b>Purification Method:</b> Protein A purification
<b>Size:</b> 100ug, Concentration: 1 mg/ml by Nanodrop;	<b>GeneID (NCBI):</b> 354	<b>CloneNo.:</b> 241263F8
<b>Source:</b> Rabbit	<b>UNIPROT ID:</b> P07288-1	
<b>Isotype:</b> IgG	<b>Full Name:</b> kallikrein-related peptidase 3	
	<b>Calculated MW:</b> 29 kDa	
	<b>Observed MW:</b> 30-34 kDa	

## Applications

**Tested Applications:**  
WB, IF/ICC, FC (Intra), Indirect ELISA

**Species Specificity:**  
human

## Background Information

Kallikreins are a subgroup of serine proteases having diverse physiological functions. Growing evidence suggests that many kallikreins are implicated in carcinogenesis and some have potential as novel cancer and other disease biomarkers. kallikrein-related peptidase 3, which is also called PSA (prostate-specific antigen) in the clinical setting, is useful in the diagnosis and monitoring of prostatic carcinoma. KLK3 has 5 isoforms produced by alternative splicing.

## Storage

**Storage:**  
Store at -80°C.

**Storage Buffer:**  
PBS Only

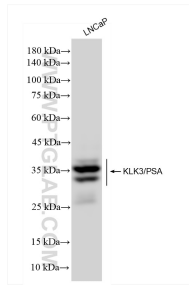
For technical support and original validation data for this product please contact:

T: 1 (888) 4PTGLAB (1-888-478-4522) (toll free in USA), or 1(312) 455-8498 (outside USA)

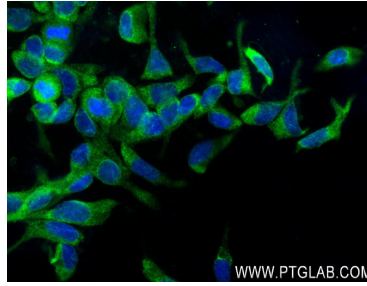
E: [proteintech@ptglab.com](mailto:proteintech@ptglab.com)  
W: [ptglab.com](http://ptglab.com)

**This product is exclusively available under Proteintech Group brand and is not available to purchase from any other manufacturer.**

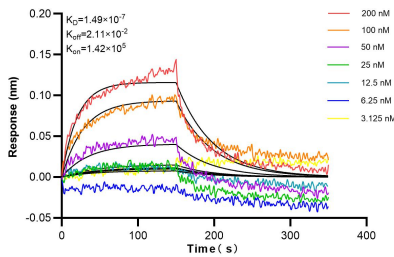
## Selected Validation Data



LNCaP cells were subjected to SDS PAGE followed by western blot with 84059-5-RR (KLK3/PSA antibody) at dilution of 1:10000 incubated at room temperature for 1.5 hours. This data was developed using the same antibody clone with 84059-5-PBS in a different storage buffer formulation.



Immunofluorescent analysis of (4% PFA) fixed LNCaP cells using KLK3/PSA antibody (84059-5-RR, Clone: 241263F8) at dilution of 1:250 and CoraLite® 488-Conjugated Goat Anti-Rabbit IgG(H+L) (SA00013-2). This data was developed using the same antibody clone with 84059-5-PBS in a different storage buffer formulation.



Biolayer interferometry (BLI) kinetic assays of 84059-5-RR against Human KLK3/PSA were performed. The affinity constant is 149 nM.

1x10<sup>6</sup> HeLa cells were intracellularly stained with 0.25 ug KLK3/PSA Recombinant antibody (84059-5-RR, Clone:241263F8) and PE-conjugated Goat Anti-Rabbit IgG(red), or 0.25 ug Isotype Control (blue). Cells were fixed and permeabilized with True-Nuclear Transcription Factor Buffer Set. This data was developed using the same antibody clone with 84059-5-PBS in a different storage buffer formulation.