

For Research Use Only

# KLK3/PSA Recombinant antibody, PBS Only (Capture/Detector)

Catalog Number:84059-4-PBS



## Basic Information

<b>Catalog Number:</b> 84059-4-PBS	<b>GenBank Accession Number:</b> NM_001648.2	<b>Purification Method:</b> Protein A purification
<b>Size:</b> 100ug , Concentration: 1 mg/ml by Nanodrop;	<b>GeneID (NCBI):</b> 354	<b>CloneNo.:</b> 241223H3
<b>Source:</b> Rabbit	<b>UNIPROT ID:</b> P07288-1	
<b>Isotype:</b> IgG	<b>Full Name:</b> kallikrein-related peptidase 3	
	<b>Calculated MW:</b> 29 kDa	

## Applications

**Tested Applications:**  
Cytometric bead array, Sandwich ELISA, Indirect ELISA, Sample test

**Species Specificity:**  
human

## Product Information

84059-4-PBS targets KLK3/PSA as part of a matched antibody pair:

MP00975-2: 84059-4-PBS capture and 84059-1-PBS detection (validated in Cytometric bead array)

MP00975-3: 84059-9-PBS capture and 84059-4-PBS detection (validated in Sandwich ELISA)

Unconjugated rabbit recombinant monoclonal antibody in PBS only (BSA and azide free) storage buffer at a concentration of 1 mg/mL, ready for conjugation. Created using Proteintech's proprietary in-house recombinant technology. Recombinant production enables unrivalled batch-to-batch consistency, easy scale-up, and future security of supply.

This conjugation ready format makes antibodies ideal for use in many applications including: ELISAs, multiplex assays requiring matched pairs, mass cytometry, and multiplex imaging applications. Antibody use should be optimized by the end user for each application and assay.

## Storage

**Storage:**  
Store at -80°C.  
**Storage Buffer:**  
PBS Only

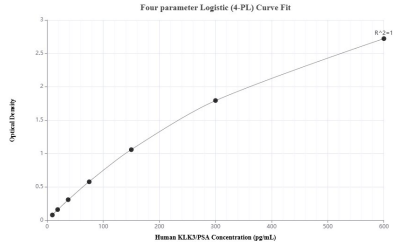
For technical support and original validation data for this product please contact:

T: 1 (888) 4PTGLAB (1-888-478-4522) (toll free in USA), or 1(312) 455-8498 (outside USA)

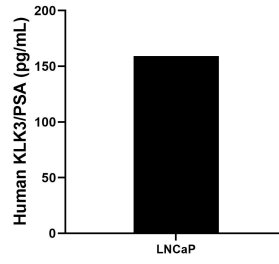
E: [proteintech@ptglab.com](mailto:proteintech@ptglab.com)  
W: [ptglab.com](http://ptglab.com)

**This product is exclusively available under Proteintech Group brand and is not available to purchase from any other manufacturer.**

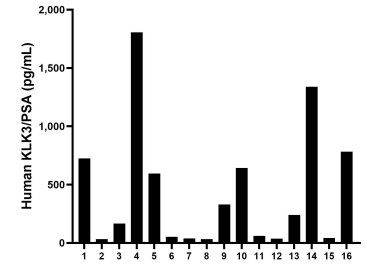
## Selected Validation Data



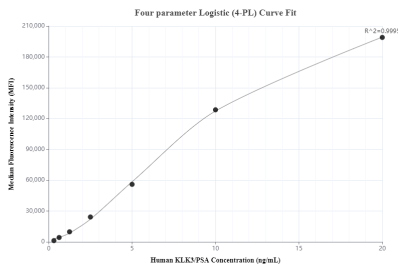
Sandwich ELISA standard curve of MP00975-3, Human KLK3/PSA Recombinant Matched Antibody Pair - PBS only. 84059-9-PBS was coated to a plate as the capture antibody and incubated with serial dilutions of standard Eg0869. 84059-4-PBS was HRP conjugated as the detection antibody. Range: 9.38-600 pg/mL



LNCap human prostate cancer cells were cultured in RPMI supplemented with 10% fetal bovine serum, 10 mM HEPES and 1 nM sodium pyruvate. An aliquot of the cell culture supernate was removed, assayed for human KLK3/PSA, and measured 159.3 pg/mL



Serum of sixteen individual healthy human donors was measured. The human KLK3/PSA concentration of detected samples was determined to be 432.7 pg/mL with a range of 32.3 - 1804.8 pg/mL



Cytometric bead array standard curve of MP00975-2, KLK3/PSA Recombinant Matched Antibody Pair, PBS Only. Capture antibody: 84059-4-PBS. Detection antibody: 84059-1-PBS. Standard: Eg0869. Range: 0.313-20 ng/mL