

For Research Use Only

RNF40 Recombinant antibody, PBS Only (Detector)

Catalog Number: 84058-3-PBS



Basic Information

Catalog Number: 84058-3-PBS	GenBank Accession Number: BC006133	Purification Method: Protein A purification
Size: 100ug, Concentration: 1 mg/ml by Nanodrop;	GeneID (NCBI): 9810	CloneNo.: 241214E10
Source: Rabbit	UNIPROT ID: O75150	
Isotype: IgG	Full Name: ring finger protein 40	
Immunogen Catalog Number: AG8047	Calculated MW: 114 kDa	

Applications

Tested Applications:
Cytometric bead array, Sandwich ELISA, Indirect ELISA,
Sample test

Species Specificity:
human

Product Information

84058-3-PBS targets RNF40 as part of a matched antibody pair:

MP00974-1: 84058-1-PBS capture and 84058-3-PBS detection (validated in Cytometric bead array, Sandwich ELISA)

MP00974-2: 84058-2-PBS capture and 84058-3-PBS detection (validated in Cytometric bead array)

Unconjugated rabbit recombinant monoclonal antibody in PBS only (BSA and azide free) storage buffer at a concentration of 1 mg/mL, ready for conjugation. Created using Proteintech's proprietary in-house recombinant technology. Recombinant production enables unrivalled batch-to-batch consistency, easy scale-up, and future security of supply.

This conjugation ready format makes antibodies ideal for use in many applications including: ELISAs, multiplex assays requiring matched pairs, mass cytometry, and multiplex imaging applications. Antibody use should be optimized by the end user for each application and assay.

Storage

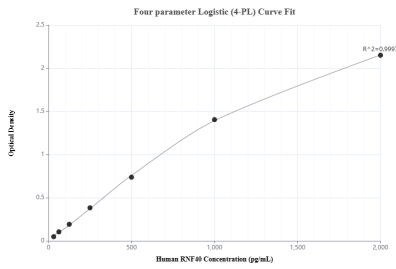
Storage:
Store at -80°C.

Storage Buffer:
PBS Only

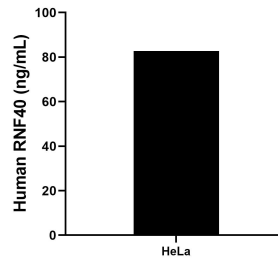
For technical support and original validation data for this product please contact:
T: 1 (888) 4PTGLAB (1-888-478-4522) (toll free in USA), or 1(312) 455-8498 (outside USA) E: proteintech@ptglab.com
W: ptglab.com

This product is exclusively available under Proteintech Group brand and is not available to purchase from any other manufacturer.

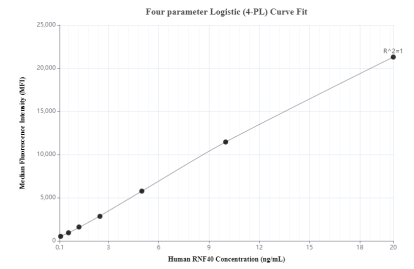
Selected Validation Data



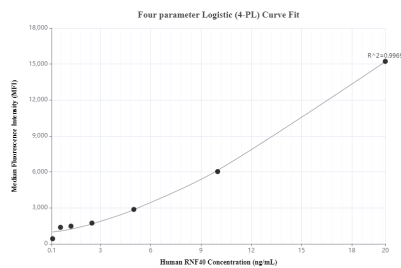
Sandwich ELISA standard curve of MP00974-1, Human RNF40 Recombinant Matched Antibody Pair - PBS only. 84058-1-PBS was coated to a plate as the capture antibody and incubated with serial dilutions of standard Ag8047. 84058-3-PBS was HRP conjugated as the detection antibody. Range: 31.3-2000 pg/mL



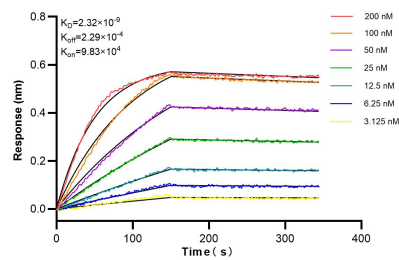
The mean RNF40 concentration was determined to be 82.72 ng/mL in HeLa cell extract based on a 2.0 mg/mL extract load.



Cytometric bead array standard curve of MP00974-1, RNF40 Recombinant Matched Antibody Pair, PBS Only. Capture antibody: 84058-1-PBS. Detection antibody: 84058-3-PBS. Standard: Ag8047. Range: 0.156-20 ng/mL



Cytometric bead array standard curve of MP00974-2, RNF40 Recombinant Matched Antibody Pair, PBS Only. Capture antibody: 84058-2-PBS. Detection antibody: 84058-3-PBS. Standard: Ag8047. Range: 0.156-20 ng/mL



Biolayer interferometry (BLI) kinetic assays of 84058-3-RR against Human RNF40 were performed. The affinity constant is 2.32 nM.