

For Research Use Only

DSG1 Recombinant antibody, PBS Only (Capture)

Catalog Number: 84053-2-PBS



Basic Information

Catalog Number: 84053-2-PBS	GenBank Accession Number: BC153001	Purification Method: Protein A purification
Size: 100ug, Concentration: 1 mg/ml by Nanodrop;	GeneID (NCBI): 1828	CloneNo.: 241093E12
Source: Rabbit	UNIPROT ID: Q02413	
Isotype: IgG	Full Name: desmoglein 1	
Immunogen Catalog Number: AG20184	Calculated MW: 1049 aa, 114 kDa	

Applications

Tested Applications:
Cytometric bead array, Sandwich ELISA, Indirect ELISA,
Sample test

Species Specificity:
human

Product Information

84053-2-PBS targets DSG1 as part of a matched antibody pair:

MP00985-1: 84053-2-PBS capture and 84053-1-PBS detection (validated in Cytometric bead array)

MP00985-2: 84053-2-PBS capture and 84053-5-PBS detection (validated in Cytometric bead array)

MP00985-4: 84053-2-PBS capture and 84053-7-PBS detection (validated in Sandwich ELISA)

Unconjugated rabbit recombinant monoclonal antibody in PBS only (BSA and azide free) storage buffer at a concentration of 1 mg/mL, ready for conjugation. Created using Proteintech's proprietary in-house recombinant technology. Recombinant production enables unrivalled batch-to-batch consistency, easy scale-up, and future security of supply.

This conjugation ready format makes antibodies ideal for use in many applications including: ELISAs, multiplex assays requiring matched pairs, mass cytometry, and multiplex imaging applications. Antibody use should be optimized by the end user for each application and assay.

Storage

Storage:
Store at -80°C.
Storage Buffer:
PBS Only

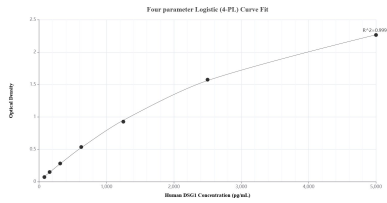
For technical support and original validation data for this product please contact:

T: 1 (888) 4PTGLAB (1-888-478-4522) (toll free
in USA), or 1(312) 455-8498 (outside USA)

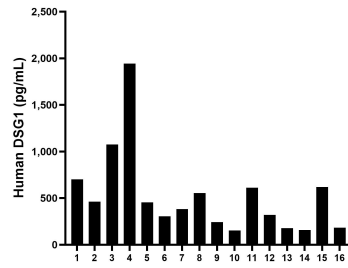
E: proteintech@ptglab.com
W: ptglab.com

This product is exclusively available under Proteintech Group brand and is not available to purchase from any other manufacturer.

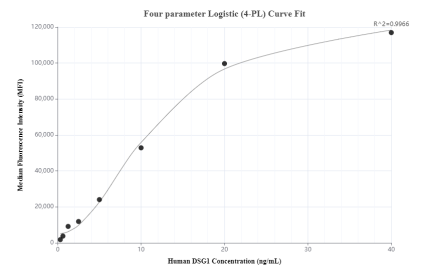
Selected Validation Data



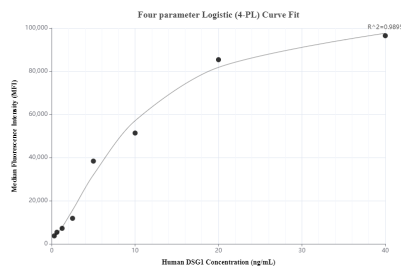
Sandwich ELISA standard curve of MP00985-4, Human DSG1 Recombinant Matched Antibody Pair - PBS only. 84053-2-PBS was coated to a plate as the capture antibody and incubated with serial dilutions of standard Ag20184. 84053-7-PBS was HRP conjugated as the detection antibody. Range: 78.1-5000 pg/mL.



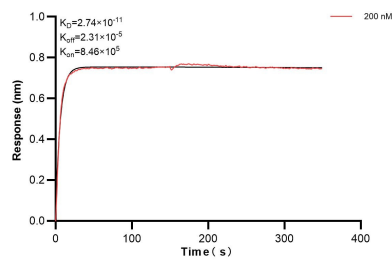
Serum of sixteen individual healthy human donors was measured. The DSG1 concentration of detected samples was determined to be 521.4 pg/mL with a range of 152.5-1,943.2 pg/mL.



Cytometric bead array standard curve of MP00985-1, DSG1 Recombinant Matched Antibody Pair, PBS Only. Capture antibody: 84053-2-PBS. Detection antibody: 84053-1-PBS. Standard: Ag20184. Range: 0.313-40 ng/mL.



Cytometric bead array standard curve of MP00985-2, DSG1 Recombinant Matched Antibody Pair, PBS Only. Capture antibody: 84053-2-PBS. Detection antibody: 84053-5-PBS. Standard: Ag20184. Range: 0.313-40 ng/mL.



Biolayer interferometry (BLI) kinetic assay of 84053-2-PBS against Human DSG1 was performed. The affinity constant is 27.4 pM.