

For Research Use Only

PRC1 Recombinant antibody

Catalog Number: 84041-2-RR



Basic Information

Catalog Number: 84041-2-RR	GenBank Accession Number: BC003138	Purification Method: Protein A purification
Size: 100ul , Concentration: 1000 µg/ml by Nanodrop;	GeneID (NCBI): 9055	CloneNo.: 241216H2
Source: Rabbit	UNIPROT ID: O43663	Recommended Dilutions: WB 1:20000-1:100000 IF/ICC 1:200-1:800
Isotype: IgG	Full Name: protein regulator of cytokinesis 1	
Immunogen Catalog Number: AG8028	Calculated MW: 72 kDa	

Applications

Tested Applications: WB, IF/ICC, ELISA	Positive Controls:
Species Specificity: human	WB : MCF-7 cells, L02 cells, HeLa cells, HEK-293 cells, HCT 116 cells, C6 cells
	IF/ICC : HepG2 cells,

Background Information

PRC1 (protein regulator of cytokinesis 1) is a microtubule-bundling protein that is involved in cytokinesis. Depletion of PRC1 leads to failed cytokinesis. PRC1 is located in the nucleus during interphase, and becomes associated with mitotic spindles in a highly dynamic manner during mitosis, and localizes to the cell mid-body during cytokinesis. PRC1 is a substrate of CDK1 and it was assumed that CDK1 phosphorylation blocks its activity during metaphase. Three isoforms of PRC1 exist due to the alternative splicing, with predictive molecular weight of 71.6 kDa, 70.2 kDa and 66.2 kDa, respectively.

Storage

Storage:
Store at -20°C. Stable for one year after shipment.
Storage Buffer:
PBS with 0.02% sodium azide and 50% glycerol pH 7.3.
Aliquoting is unnecessary for -20°C storage

*** 20ul sizes contain 0.1% BSA

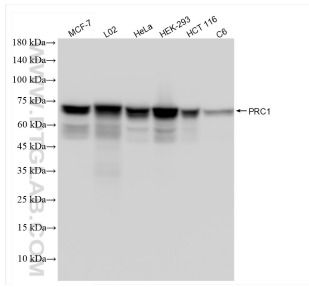
For technical support and original validation data for this product please contact:

T: 1 (888) 4PTGLAB (1-888-478-4522) (toll free in USA), or 1(312) 455-8498 (outside USA)

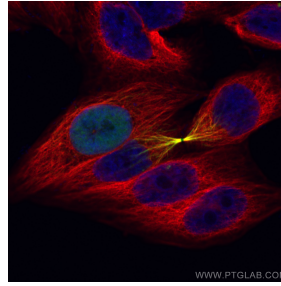
E: proteintech@ptglab.com
W: ptglab.com

This product is exclusively available under Proteintech Group brand and is not available to purchase from any other manufacturer.

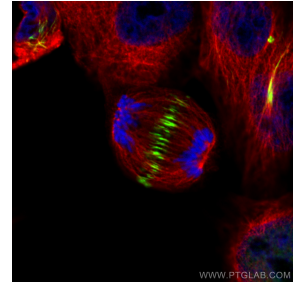
Selected Validation Data



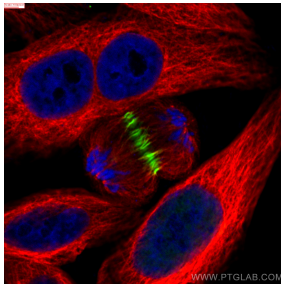
Various lysates were subjected to SDS PAGE followed by western blot with 84041-2-RR (PRC1 antibody) at dilution of 1:50000 incubated at room temperature for 1.5 hours.



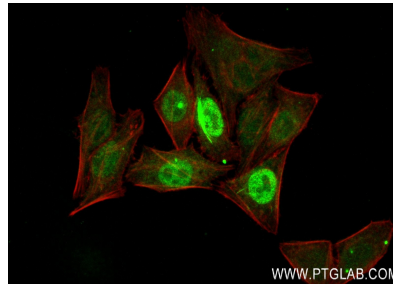
Immunofluorescent analysis of (4% PFA) fixed HepG2 cells using PRC1 antibody (84041-2-RR, Clone: 241216H2) at dilution of 1:400 and CoraLite®488-Conjugated Goat Anti-Rabbit IgG(H+L) (SA00013-2), Alpha Tubulin antibody (66031-1-Ig, Clone: 1E4C11, red).



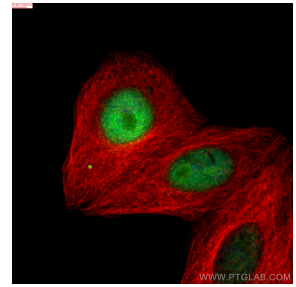
Immunofluorescent analysis of (4% PFA) fixed HepG2 cells using PRC1 antibody (84041-2-RR, Clone: 241216H2) at dilution of 1:400 and CoraLite®488-Conjugated Goat Anti-Rabbit IgG(H+L) (SA00013-2), Alpha Tubulin antibody (66031-1-Ig, Clone: 1E4C11, red).



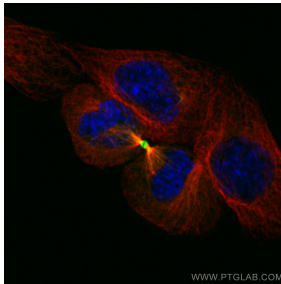
Immunofluorescent analysis of (4% PFA) fixed HepG2 cells using PRC1 antibody (84041-2-RR, Clone: 241216H2) at dilution of 1:400 and CoraLite®488-Conjugated Goat Anti-Rabbit IgG(H+L) (SA00013-2), Alpha Tubulin antibody (66031-1-Ig, Clone: 1E4C11, red).



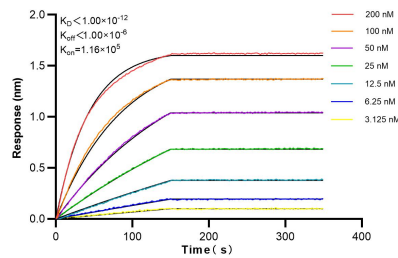
Immunofluorescent analysis of (4% PFA) fixed HepG2 cells using PRC1 antibody (84041-2-RR, Clone: 241216H2) at dilution of 1:400 and CoraLite®488-Conjugated Goat Anti-Rabbit IgG(H+L) (SA00013-2), CL594-Phalloidin (red).



Immunofluorescent analysis of (4% PFA) fixed HepG2 cells using PRC1 antibody (84041-2-RR, Clone: 241216H2) at dilution of 1:400 and CoraLite®488-Conjugated Goat Anti-Rabbit IgG(H+L) (SA00013-2), Alpha Tubulin antibody (66031-1-Ig, Clone: 1E4C11, red).



Immunofluorescent analysis of (4% PFA) fixed HepG2 cells using PRC1 antibody (84041-2-RR, Clone: 241216H2) at dilution of 1:400 and CoraLite®488-Conjugated Goat Anti-Rabbit IgG(H+L) (SA00013-2), Alpha Tubulin antibody (66031-1-Ig, Clone: 1E4C11, red).



Biolayer interferometry (BLI) kinetic assays of 84041-2-RR against Human PRC1 were performed. The affinity constant is below 1 pM.