

For Research Use Only

PRC1 Recombinant antibody, PBS Only (Capture)

Catalog Number: 84041-2-PBS



Basic Information

Catalog Number: 84041-2-PBS	GenBank Accession Number: BC003138	Purification Method: Protein A purification
Size: 100ug, Concentration: 1 mg/ml by Nanodrop;	GeneID (NCBI): 9055	CloneNo.: 241216H2
Source: Rabbit	UNIPROT ID: O43663	
Isotype: IgG	Full Name: protein regulator of cytokinesis 1	
Immunogen Catalog Number: AG8028	Calculated MW: 72 kDa	

Applications

Tested Applications:
WB, IF/ICC, Cytometric bead array, Indirect ELISA

Species Specificity:
human

Product Information

84041-2-PBS targets PRC1 as part of a matched antibody pair:

MP00970-1: 84041-2-PBS capture and 84041-1-PBS detection (validated in Cytometric bead array)

MP00970-2: 84041-2-PBS capture and 84041-3-PBS detection (validated in Cytometric bead array)

Unconjugated rabbit recombinant monoclonal antibody in PBS only (BSA and azide free) storage buffer at a concentration of 1 mg/mL, ready for conjugation. Created using Proteintech's proprietary in-house recombinant technology. Recombinant production enables unrivalled batch-to-batch consistency, easy scale-up, and future security of supply.

This conjugation ready format makes antibodies ideal for use in many applications including: ELISAs, multiplex assays requiring matched pairs, mass cytometry, and multiplex imaging applications. Antibody use should be optimized by the end user for each application and assay.

Background Information

PRC1 (protein regulator of cytokinesis 1) is a microtubule-bundling protein that is involved in cytokinesis. Depletion of PRC1 leads to failed cytokinesis. PRC1 is located in the nucleus during interphase, and becomes associated with mitotic spindles in a highly dynamic manner during mitosis, and localizes to the cell mid-body during cytokinesis. PRC1 is a substrate of CDK1 and it was assumed that CDK1 phosphorylation blocks its activity during metaphase. Three isoforms of PRC1 exist due to the alternative splicing, with predictive molecular weight of 71.6 kDa, 70.2 kDa and 66.2 kDa, respectively.

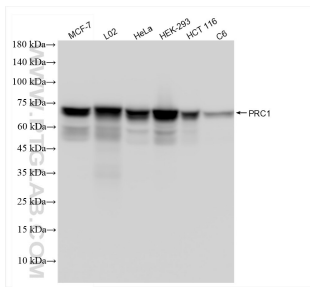
Storage

Storage:
Store at -80°C.
Storage Buffer:
PBS Only

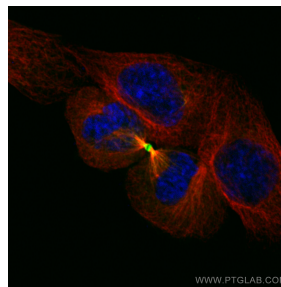
For technical support and original validation data for this product please contact:
T: 1 (888) 4PTGLAB (1-888-478-4522) (toll free in USA), or 1(312) 455-8498 (outside USA)
E: proteintech@ptglab.com
W: ptglab.com

This product is exclusively available under Proteintech Group brand and is not available to purchase from any other manufacturer.

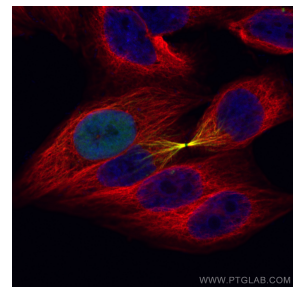
Selected Validation Data



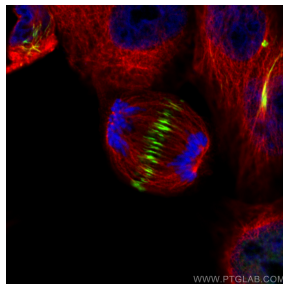
Various lysates were subjected to SDS PAGE followed by western blot with 84041-2-RR (PRC1 antibody) at dilution of 1:50000 incubated at room temperature for 1.5 hours. This data was developed using the same antibody clone with 84041-2-PBS in a different storage buffer formulation.



Immunofluorescent analysis of (4% PFA) fixed HepG2 cells using PRC1 antibody (84041-2-RR, Clone: 241216H2) at dilution of 1:400 and CoraLite®488-Conjugated Goat Anti-Rabbit IgG(H+L) (SA00013-2), Alpha Tubulin antibody (66031-1-Ig, Clone: 1E4C11, red). This data was developed using the same antibody clone with 84041-2-PBS in a different storage buffer formulation.



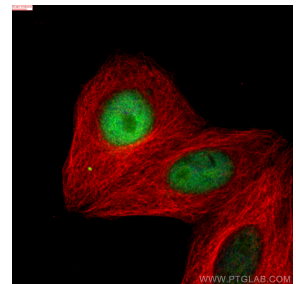
Immunofluorescent analysis of (4% PFA) fixed HepG2 cells using PRC1 antibody (84041-2-RR, Clone: 241216H2) at dilution of 1:400 and CoraLite®488-Conjugated Goat Anti-Rabbit IgG(H+L) (SA00013-2), Alpha Tubulin antibody (66031-1-Ig, Clone: 1E4C11, red). This data was developed using the same antibody clone with 84041-2-PBS in a different storage buffer formulation.



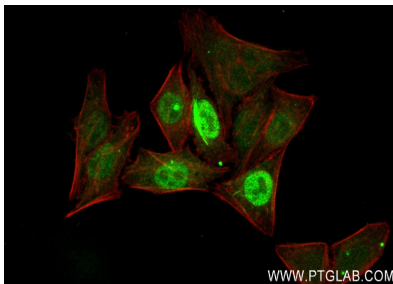
Immunofluorescent analysis of (4% PFA) fixed HepG2 cells using PRC1 antibody (84041-2-RR, Clone: 241216H2) at dilution of 1:400 and CoraLite®488-Conjugated Goat Anti-Rabbit IgG(H+L) (SA00013-2), Alpha Tubulin antibody (66031-1-Ig, Clone: 1E4C11, red). This data was developed using the same antibody clone with 84041-2-PBS in a different storage buffer formulation.



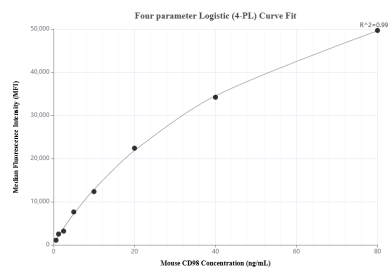
Immunofluorescent analysis of (4% PFA) fixed HepG2 cells using PRC1 antibody (84041-2-RR, Clone: 241216H2) at dilution of 1:400 and CoraLite®488-Conjugated Goat Anti-Rabbit IgG(H+L) (SA00013-2), Alpha Tubulin antibody (66031-1-Ig, Clone: 1E4C11, red). This data was developed using the same antibody clone with 84041-2-PBS in a different storage buffer formulation.



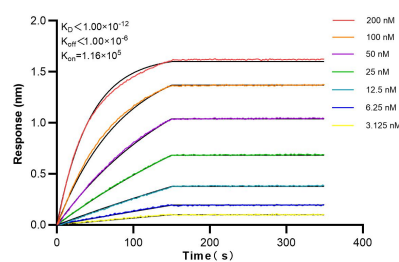
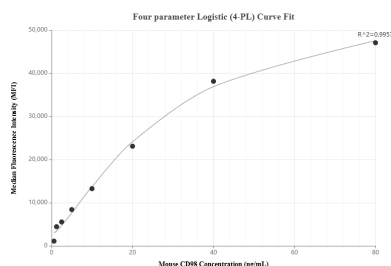
Immunofluorescent analysis of (4% PFA) fixed HepG2 cells using PRC1 antibody (84041-2-RR, Clone: 241216H2) at dilution of 1:400 and CoraLite®488-Conjugated Goat Anti-Rabbit IgG(H+L) (SA00013-2), Alpha Tubulin antibody (66031-1-Ig, Clone: 1E4C11, red). This data was developed using the same antibody clone with 84041-2-PBS in a different storage buffer formulation.



Immunofluorescent analysis of (4% PFA) fixed HepG2 cells using PRC1 antibody (84041-2-RR, Clone: 241216H2) at dilution of 1:400 and CoraLite®488-Conjugated Goat Anti-Rabbit IgG(H+L) (SA00013-2), CL594-Phalloidin (red). This data was developed using the same antibody clone with 84041-2-PBS in a different storage buffer formulation.



Cytometric bead array standard curve of MP00970-2, PRC1 Recombinant Matched Antibody Pair, PBS Only. Capture antibody: 84041-2-PBS. Detection antibody: 84041-3-PBS. Standard: null. Range: null.



Cytometric bead array standard curve of MP00970-2, PRC1 Recombinant Matched Antibody Pair, PBS Only. Capture antibody: 84041-2-PBS. Detection antibody: 84041-3-PBS. Standard: Ag8028. Range: 0.625-80 ng/mL.

Biolayer interferometry (BLI) kinetic assays of 84041-2-RR against Human PRC1 were performed. The affinity constant is below 1 pM.