

For Research Use Only

PARP14 Recombinant antibody, PBS Only (Detector)

Catalog Number:84039-1-PBS



Basic Information

Catalog Number: 84039-1-PBS	GenBank Accession Number: NM_017554	Purification Method: Protein A purification
Size: 100ug , Concentration: 1 mg/ml by Nanodrop;	GeneID (NCBI): 54625	CloneNo.: 241078B2
Source: Rabbit	UNIPROT ID: Q460N5	
Isotype: IgG	Full Name: poly (ADP-ribose) polymerase family, member 14	
Immunogen Catalog Number: AG35007	Calculated MW: 203kd	

Applications

Tested Applications:
Cytometric bead array, Sandwich ELISA, Indirect ELISA, Sample test

Species Specificity:
human

Product Information

84039-1-PBS targets PARP14 as part of a matched antibody pair:

MP00966-2: 84039-3-PBS capture and 84039-1-PBS detection (validated in Cytometric bead array)

MP00966-3: 84039-5-PBS capture and 84039-1-PBS detection (validated in Sandwich ELISA)

Unconjugated rabbit recombinant monoclonal antibody in PBS only (BSA and azide free) storage buffer at a concentration of 1 mg/mL, ready for conjugation. Created using Proteintech's proprietary in-house recombinant technology. Recombinant production enables unrivalled batch-to-batch consistency, easy scale-up, and future security of supply.

This conjugation ready format makes antibodies ideal for use in many applications including: ELISAs, multiplex assays requiring matched pairs, mass cytometry, and multiplex imaging applications. Antibody use should be optimized by the end user for each application and assay.

Storage

Storage:
Store at -80°C.
Storage Buffer:
PBS Only

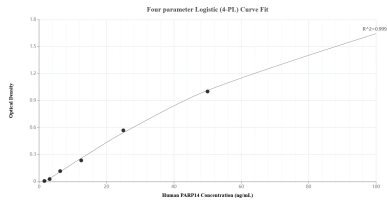
For technical support and original validation data for this product please contact:

T: 1 (888) 4PTGLAB (1-888-478-4522) (toll free in USA), or 1(312) 455-8498 (outside USA)

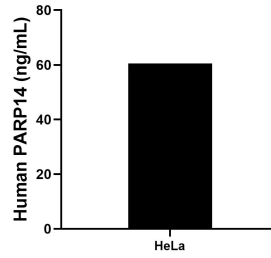
E: proteintech@ptglab.com
W: ptglab.com

This product is exclusively available under Proteintech Group brand and is not available to purchase from any other manufacturer.

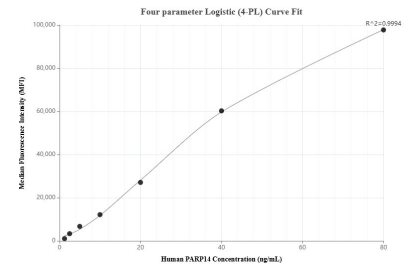
Selected Validation Data



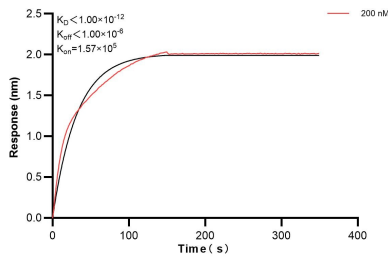
Sandwich ELISA standard curve of MP00966-3, Human PARP14 Recombinant Matched Antibody Pair - PBS only. 84039-5-PBS was coated to a plate as the capture antibody and incubated with serial dilutions of standard Ag35007. 84039-1-PBS was HRP conjugated as the detection antibody. Range: 1.56-100 ng/mL.



The mean PARP14 concentration was determined to be 60.54 ng/mL in HeLa cell extract based on a 1.00 mg/mL extract load.



Cytometric bead array standard curve of MP00966-2, PARP14 Recombinant Matched Antibody Pair, PBS Only. Capture antibody: 84039-3-PBS. Detection antibody: 84039-1-PBS. Standard: Ag35007. Range: 1.25-80 ng/mL.



Bi-layer interferometry (BLI) kinetic assay of 84039-1-PBS against Human PARP14 was performed. The affinity constant is below 1 pM.