

For Research Use Only

BCAM Recombinant antibody

Catalog Number: 84038-3-RR



Basic Information

Catalog Number: 84038-3-RR	GenBank Accession Number: BC050450	Purification Method: Protein A purification
Size: 100ul , Concentration: 1000 µg/ml by Nanodrop;	GeneID (NCBI): 4059	CloneNo.: 241051C8
Source: Rabbit	UNIPROT ID: P50895	Recommended Dilutions: WB 1:2000-1:10000
Isotype: IgG	Full Name: basal cell adhesion molecule (Lutheran blood group)	
Immunogen Catalog Number: AG28181	Calculated MW: 67 kDa	
	Observed MW: 67 kDa, 78-85 kDa	

Applications

Tested Applications: WB, ELISA	Positive Controls: WB : A431 cells, T-47D cells, human placenta tissue
Species Specificity: human	

Background Information

Basal cell adhesion molecule (Lu/BCAM) is a membrane-bound glycoprotein of the immunoglobulin superfamily (IgSF), functioning as a receptor for the extracellular matrix protein, laminin. BCAM (Lutheran/basal cell-adhesion molecule, a glycoprotein) belongs to the immunoglobulin superfamily which contains both Lu blood group and BCAM tumor-associated antigens. Proteomics analysis suggests that BCAM might be a potential biomarker for pancreatic cancer (PMID: 19199705). BCAM, involved in cell adhesion and migration, can also promote tumor metastasis and has been elucidated to play a functional role in the metastasis of thyroid cancer and gastric cancer (PMID: 10728810, 35941663). De-glycosylated BCAM has a predicted molecular weight of 67 kDa. Two BCAM glycoprotein (gp) isoforms are present on human RBCs, Lu (85 kDa) and Lu(v13) (78 kDa); they result from the alternative splicing of intron 13 and differ by the lengths of their cytoplasmic domains (PMID: 23160466).

Storage

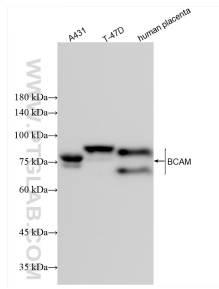
Storage:
Store at -20°C. Stable for one year after shipment.
Storage Buffer:
PBS with 0.02% sodium azide and 50% glycerol pH 7.3.
Aliquoting is unnecessary for -20°C storage

*** 20ul sizes contain 0.1% BSA

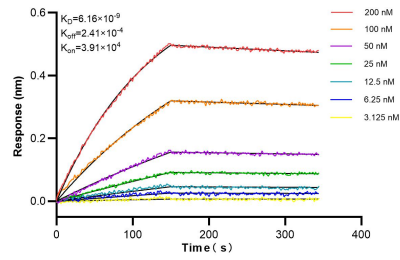
For technical support and original validation data for this product please contact:
T: 1 (888) 4PTGLAB (1-888-478-4522) (toll free in USA), or 1(312) 455-8498 (outside USA)
E: proteintech@ptglab.com
W: ptglab.com

This product is exclusively available under Proteintech Group brand and is not available to purchase from any other manufacturer.

Selected Validation Data



Various lysates were subjected to SDS PAGE followed by western blot with 84038-3-RR (BCAM antibody) at dilution of 1:5000 incubated at room temperature for 1.5 hours.



Biolayer interferometry (BLI) kinetic assays of 84038-3-RR against Human BCAM were performed. The affinity constant is 6.16 nM.