

For Research Use Only

# BCAM Recombinant antibody, PBS Only

Catalog Number: 84038-3-PBS



## Basic Information

<b>Catalog Number:</b> 84038-3-PBS	<b>GenBank Accession Number:</b> BC050450	<b>Purification Method:</b> Protein A purification
<b>Size:</b> 100ug, Concentration: 1 mg/ml by Nanodrop;	<b>GeneID (NCBI):</b> 4059	<b>CloneNo.:</b> 241051C8
<b>Source:</b> Rabbit	<b>UNIPROT ID:</b> P50895	
<b>Isotype:</b> IgG	<b>Full Name:</b> basal cell adhesion molecule (Lutheran blood group)	
<b>Immunogen Catalog Number:</b> AG28181	<b>Calculated MW:</b> 67 kDa	
	<b>Observed MW:</b> 67 kDa, 78-85 kDa	

## Applications

**Tested Applications:**  
WB, Indirect ELISA

**Species Specificity:**  
human

## Background Information

Basal cell adhesion molecule (Lu/BCAM) is a membrane-bound glycoprotein of the immunoglobulin superfamily (IgSF), functioning as a receptor for the extracellular matrix protein, laminin. BCAM (Lutheran/basal cell-adhesion molecule, a glycoprotein) belongs to the immunoglobulin superfamily which contains both Lu blood group and BCAM tumor-associated antigens. Proteomics analysis suggests that BCAM might be a potential biomarker for pancreatic cancer (PMID: 19199705). BCAM, involved in cell adhesion and migration, can also promote tumor metastasis and has been elucidated to play a functional role in the metastasis of thyroid cancer and gastric cancer (PMID: 10728810, 35941663). De-glycosylated BCAM has a predicted molecular weight of 67 kDa. Two BCAM glycoprotein (gp) isoforms are present on human RBCs, Lu (85 kDa) and Lu(v13) (78 kDa); they result from the alternative splicing of intron 13 and differ by the lengths of their cytoplasmic domains (PMID: 23160466).

## Storage

**Storage:**  
Store at -80°C.

**Storage Buffer:**  
PBS Only

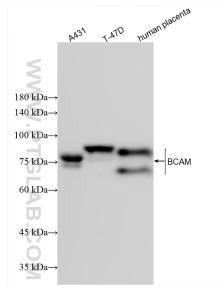
For technical support and original validation data for this product please contact:

T: 1 (888) 4PTGLAB (1-888-478-4522) (toll free in USA), or 1(312) 455-8498 (outside USA)

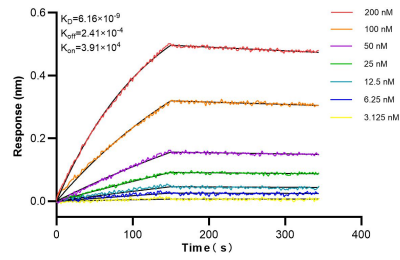
E: [proteintech@ptglab.com](mailto:proteintech@ptglab.com)  
W: [ptglab.com](http://ptglab.com)

**This product is exclusively available under Proteintech Group brand and is not available to purchase from any other manufacturer.**

## Selected Validation Data



Various lysates were subjected to SDS PAGE followed by western blot with 84038-3-RR (BCAM antibody) at dilution of 1:5000 incubated at room temperature for 1.5 hours. This data was developed using the same antibody clone with 84038-3-PBS in a different storage buffer formulation.



Biolayer interferometry (BLI) kinetic assays of 84038-3-RR against Human BCAM were performed. The affinity constant is 6.16 nM.