

For Research Use Only

BCAM Recombinant antibody, PBS Only (Capture)

Catalog Number: 84038-1-PBS



Basic Information

Catalog Number: 84038-1-PBS	GenBank Accession Number: BC050450	Purification Method: Protein A purification
Size: 100ug , Concentration: 1 mg/ml by Nanodrop;	GeneID (NCBI): 4059	CloneNo.: 241051D5
Source: Rabbit	UNIPROT ID: P50895	
Isotype: IgG	Full Name: basal cell adhesion molecule (Lutheran blood group)	
Immunogen Catalog Number: AG28181	Calculated MW: 67 kDa	

Applications

Tested Applications:
Cytometric bead array, Sandwich ELISA, Indirect ELISA,
Sample test

Species Specificity:
human

Product Information

84038-1-PBS targets BCAM as part of a matched antibody pair:

MP00965-1: 84038-1-PBS capture and 84038-2-PBS detection (validated in Cytometric bead array)

MP00965-2: 84038-1-PBS capture and 84038-4-PBS detection (validated in Sandwich ELISA)

Unconjugated rabbit recombinant monoclonal antibody in PBS only (BSA and azide free) storage buffer at a concentration of 1 mg/mL, ready for conjugation. Created using Proteintech's proprietary in-house recombinant technology. Recombinant production enables unrivalled batch-to-batch consistency, easy scale-up, and future security of supply.

This conjugation ready format makes antibodies ideal for use in many applications including: ELISAs, multiplex assays requiring matched pairs, mass cytometry, and multiplex imaging applications. Antibody use should be optimized by the end user for each application and assay.

Storage

Storage:
Store at -80°C.
Storage Buffer:
PBS Only

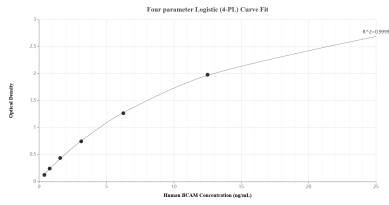
For technical support and original validation data for this product please contact:

T: 1 (888) 4PTGLAB (1-888-478-4522) (toll free
in USA), or 1(312) 455-8498 (outside USA)

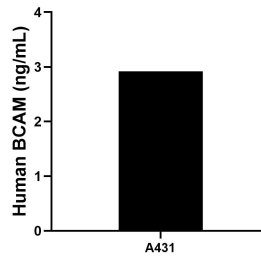
E: proteintech@ptglab.com
W: ptglab.com

This product is exclusively available under Proteintech Group brand and is not available to purchase from any other manufacturer.

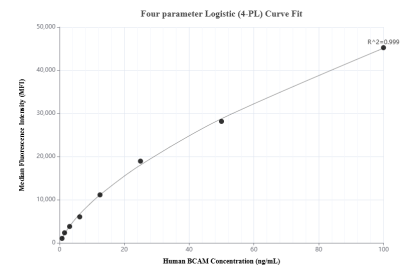
Selected Validation Data



Sandwich ELISA standard curve of MP00965-2, Human BCAM Recombinant Matched Antibody Pair - PBS only. 84038-1-PBS was coated to a plate as the capture antibody and incubated with serial dilutions of standard Ag28181. 84038-4-PBS was HRP conjugated as the detection antibody. Range: 0.391-25 ng/mL



The mean BCAM concentration was determined to be 2.92 ng/mL in A431 cell extract based on a 1.50 mg/mL extract load.



Cytometric bead array standard curve of MP00965-1, BCAM Recombinant Matched Antibody Pair, PBS Only. Capture antibody: 84038-1-PBS. Detection antibody: 84038-2-PBS. Standard: Ag28181. Range: 0.781-100 ng/mL