

For Research Use Only

ATOH1 Recombinant antibody, PBS Only (Capture)

Catalog Number: 84037-4-PBS



Basic Information

Catalog Number: 84037-4-PBS	GenBank Accession Number: BC069594	Purification Method: Protein A purification
Size: 100ug , Concentration: 1 mg/ml by Nanodrop;	GeneID (NCBI): 474	CloneNo.: 240593B10
Source: Rabbit	UNIPROT ID: Q92858	
Isotype: IgG	Full Name: atonal homolog 1 (Drosophila)	
Immunogen Catalog Number: AG15615	Calculated MW: 354 aa, 38 kDa	

Applications

Tested Applications:
Sandwich ELISA, Indirect ELISA, Sample test

Species Specificity:
human

Product Information

84037-4-PBS targets ATOH1 as part of a matched antibody pair:

MP00948-3: 84037-4-PBS capture and 84037-2-PBS detection (validated in Sandwich ELISA)

Unconjugated rabbit recombinant monoclonal antibody in PBS only (BSA and azide free) storage buffer at a concentration of 1 mg/mL, ready for conjugation. Created using Proteintech's proprietary in-house recombinant technology. Recombinant production enables unrivalled batch-to-batch consistency, easy scale-up, and future security of supply.

This conjugation ready format makes antibodies ideal for use in many applications including: ELISAs, multiplex assays requiring matched pairs, mass cytometry, and multiplex imaging applications. Antibody use should be optimized by the end user for each application and assay.

Storage

Storage:
Store at -80°C.
Storage Buffer:
PBS Only

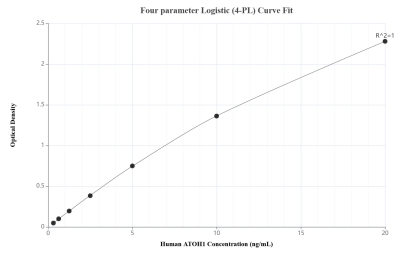
For technical support and original validation data for this product please contact:

T: 1 (888) 4PTGLAB (1-888-478-4522) (toll free
in USA), or 1(312) 455-8498 (outside USA)

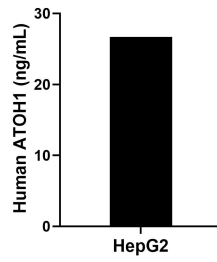
E: proteintech@ptglab.com
W: ptglab.com

This product is exclusively available under Proteintech Group brand and is not available to purchase from any other manufacturer.

Selected Validation Data



Sandwich ELISA standard curve of MP00948-3, Human ATOH1 Recombinant Matched Antibody Pair - PBS only. 84037-4-PBS was coated to a plate as the capture antibody and incubated with serial dilutions of standard Ag15615. 84037-2-PBS was HRP conjugated as the detection antibody. Range: 0.313-20 ng/mL



The mean ATOH1 concentration was determined to be 26.69 ng/mL in HepG2 cell extract based on a 1.00 mg/mL extract load.