

For Research Use Only

L1CAM Recombinant antibody, PBS Only

Catalog Number: 84034-5-PBS



Basic Information

Catalog Number: 84034-5-PBS	GenBank Accession Number: BC126229	Purification Method: Protein A purification
Size: 100ug, Concentration: 1 mg/ml by Nanodrop;	GeneID (NCBI): 3897	CloneNo.: 240978A7
Source: Rabbit	UNIPROT ID: P32004	
Isotype: IgG	Full Name: L1 cell adhesion molecule	
	Calculated MW: 1257 aa, 140 kDa	

Applications

Tested Applications:
IF/ICC, Indirect ELISA

Species Specificity:
human

Background Information

L1CAM, also known as NCAM-L1 or CD171, is a cell adhesion molecule of the immunoglobulin superfamily. It is a 200-220 kDa transmembrane glycoprotein composed of six Ig-like domains and five fibronectin type III repeats followed by a transmembrane region and a highly conserved cytoplasmic tail (PMID: 3412448; 22796939). L1CAM is primarily expressed in the nervous system and is involved in neuron-neuron adhesion, neurite fasciculation, outgrowth of neurites, cerebellar granule cell migration, neurite outgrowth on Schwann cells and interactions among epithelial cells of intestinal crypts (PMID: 3412448; 10767310). L1CAM is overexpressed in many human cancers and is often associated with bad prognosis (PMID: 27267927; 26111503).

Storage

Storage:
Store at -80°C.

Storage Buffer:
PBS Only

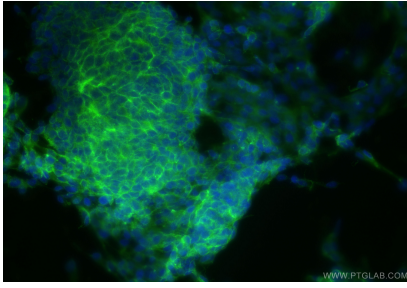
For technical support and original validation data for this product please contact:

T: 1 (888) 4PTGLAB (1-888-478-4522) (toll free in USA), or 1(312) 455-8498 (outside USA)

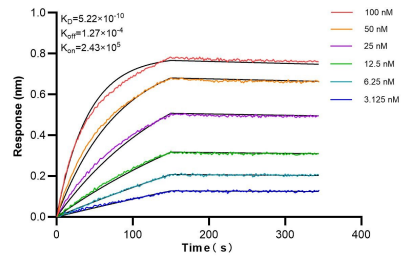
E: proteintech@ptglab.com
W: ptglab.com

This product is exclusively available under Proteintech Group brand and is not available to purchase from any other manufacturer.

Selected Validation Data



Immunofluorescent analysis of (4% PFA) fixed SH-SY5Y cells using L1CAM antibody (84034-5-RR, Clone: 240978A7) at dilution of 1:500 and CoraLite®488-Conjugated Goat Anti-Rabbit IgG(H+L) (SA00013-2). This data was developed using the same antibody clone with 84034-5-PBS in a different storage buffer formulation.



Biolayer interferometry (BLI) kinetic assays of 84034-5-RR against Human L1CAM were performed. The affinity constant is 0.522 nM.