

For Research Use Only

L1CAM Recombinant antibody

Catalog Number: 84034-4-RR



Basic Information

Catalog Number: 84034-4-RR	GenBank Accession Number: BC126229	Purification Method: Protein A purification
Size: 100ul , Concentration: 1000 µg/ml by Nanodrop;	GeneID (NCBI): 3897	CloneNo.: 240978F1
Source: Rabbit	UNIPROT ID: P32004	Recommended Dilutions: WB 1:500-1:2000
Isotype: IgG	Full Name: L1 cell adhesion molecule	
	Calculated MW: 1257 aa, 140 kDa	
	Observed MW: 245 kDa	

Applications

Tested Applications: WB, ELISA	Positive Controls: WB : A549 cells,
Species Specificity: human	

Background Information

L1CAM, also known as NCAM-L1 or CD171, is a cell adhesion molecule of the immunoglobulin superfamily. It is a 200-220 kDa transmembrane glycoprotein composed of six Ig-like domains and five fibronectin type III repeats followed by a transmembrane region and a highly conserved cytoplasmic tail (PMID: 3412448; 22796939). L1CAM is primarily expressed in the nervous system and is involved in neuron-neuron adhesion, neurite fasciculation, outgrowth of neurites, cerebellar granule cell migration, neurite outgrowth on Schwann cells and interactions among epithelial cells of intestinal crypts (PMID: 3412448; 10767310). L1CAM is overexpressed in many human cancers and is often associated with bad prognosis (PMID: 27267927; 26111503).

Storage

Storage:
Store at -20°C. Stable for one year after shipment.
Storage Buffer:
PBS with 0.02% sodium azide and 50% glycerol pH 7.3.
Aliquoting is unnecessary for -20°C storage

*** 20ul sizes contain 0.1% BSA

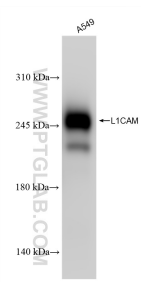
For technical support and original validation data for this product please contact:

T: 1 (888) 4PTGLAB (1-888-478-4522) (toll free
in USA), or 1(312) 455-8498 (outside USA)

E: proteintech@ptglab.com
W: ptglab.com

This product is exclusively available under Proteintech Group brand and is not available to purchase from any other manufacturer.

Selected Validation Data



A549 cells were subjected to SDS PAGE followed by western blot with 84034-4-RR (L1CAM antibody) at dilution of 1:1000 incubated at room temperature for 1.5 hours.